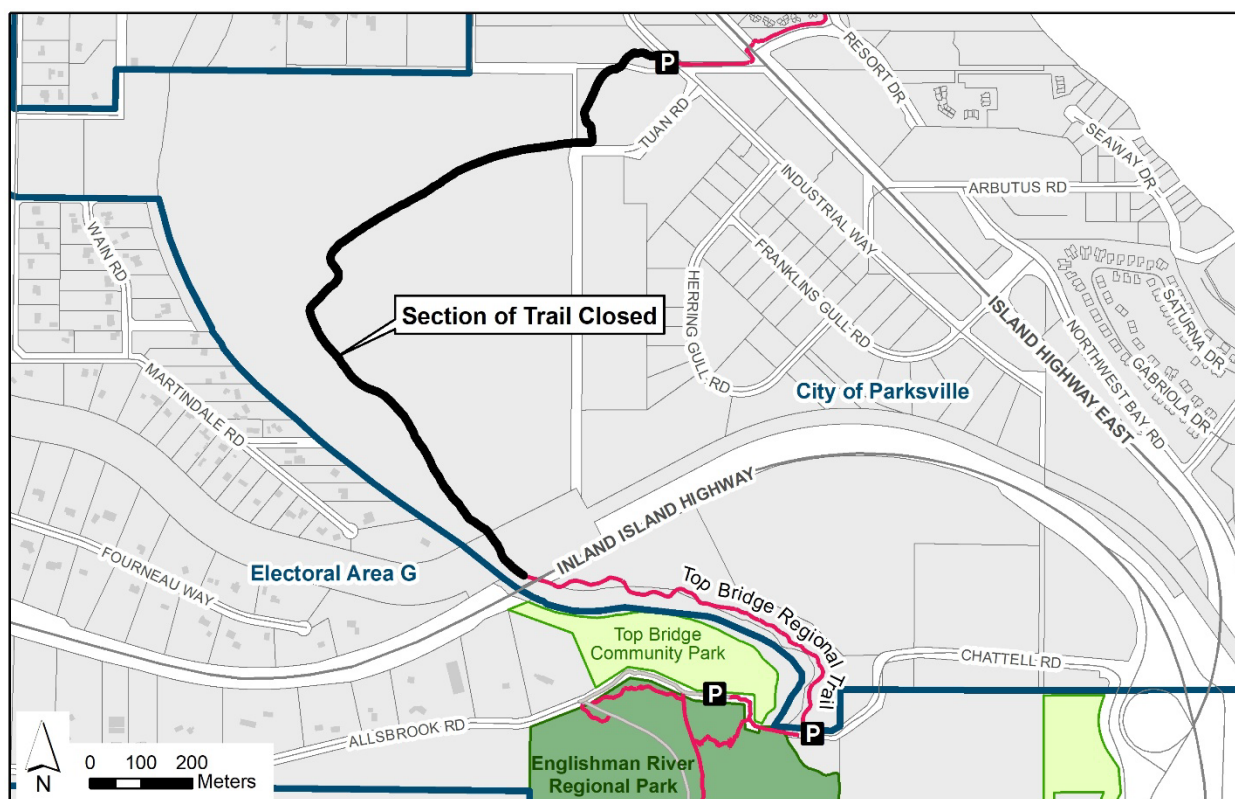


## Trail Closure – Top Bridge Regional Trail

A section of the Top Bridge Regional Trail between the Inland Island Highway and Industrial Way that crosses private land has been closed to public access. The Regional District of Nanaimo (RDN) is reviewing options to maintain public access from the resort area of Parksville to the Top Bridge suspension bridge crossing. The RDN recognizes this is a popular recreational area and staff are in communication with the City of Parksville to establish a new connector trail as soon as possible. In the meantime, Top Bridge Community Park, Top Bridge Suspension Bridge and Englishman River Regional Park can be accessed via Allsbrook Road or Chattel Road.



**For more information, please contact:**

Parks Services

Regional District of Nanaimo

 1-888-828-2069

 [rdnparks@rdn.bc.ca](mailto:rdnparks@rdn.bc.ca)

**Get Involved RDN!**