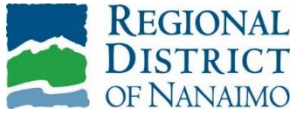


---

# JOINT NEWS RELEASE



March 21, 2024

---

## **RDN and City of Parksville Agreement Realigns Portion of Top Bridge Regional Trail**

The Regional District of Nanaimo (RDN) and City of Parksville (Parksville) are pleased to announce an agreement has been reached to realign a section of the Top Bridge Regional Trail over an existing road right-of-way and on City of Parksville-owned lands. The realignment will ensure that this popular multi-purpose trail will once again connect Rathtrevor Beach Provincial Park and the resort area of Parksville with the City of Parksville's Top Bridge Park and the RDN's Top Bridge suspension bridge, through to Englishman River Regional Park. The trail work is expected to begin in April and be substantially complete and open to the public by the fall of 2024.

The RDN will install wayfinding signage and gravel surfacing to improve the user experience and enhance accessibility. A chain link fence will also be installed along the east side of the trail that borders the City of Parksville's works yard. An existing kiosk will be moved from the Industrial Way trailhead to align with the new trail entrance.

Once complete, the RDN will provide ongoing management and maintenance of the trail and signage under a renewable, five-year agreement. For more information on the Top Bridge Regional Trail, visit [rdn.bc.ca/top-bridge-regional-trail](https://rdn.bc.ca/top-bridge-regional-trail) and parks in the RDN, visit [rdn.bc.ca/parks-services](https://rdn.bc.ca/parks-services). For information on parks in Parksville, visit [parksville.ca](https://parksville.ca).

### **Quotes**

"Top Bridge Regional Trail is an important recreational corridor that provides residents and visitors an opportunity to explore and appreciate nature in our region. The Regional District of Nanaimo thanks the City of Parksville for working with us to ensure this trail will again provide access to multiple significant and beautiful park areas, which will support quality of life for our community."

Vanessa Craig, Chair, Regional District of Nanaimo

"Top Bridge Regional Trail is a valued multi-purpose trail connecting popular Rathtrevor Beach Provincial Park and Parksville's resort area to Top Bridge Park and the Englishman River Regional Park. The trail is a vital recreational corridor for this region's residents and visitors to experience nature at its best. Our thanks to the RDN for their vision in bringing this forward."

Doug O'Brien, Mayor, City of Parksville

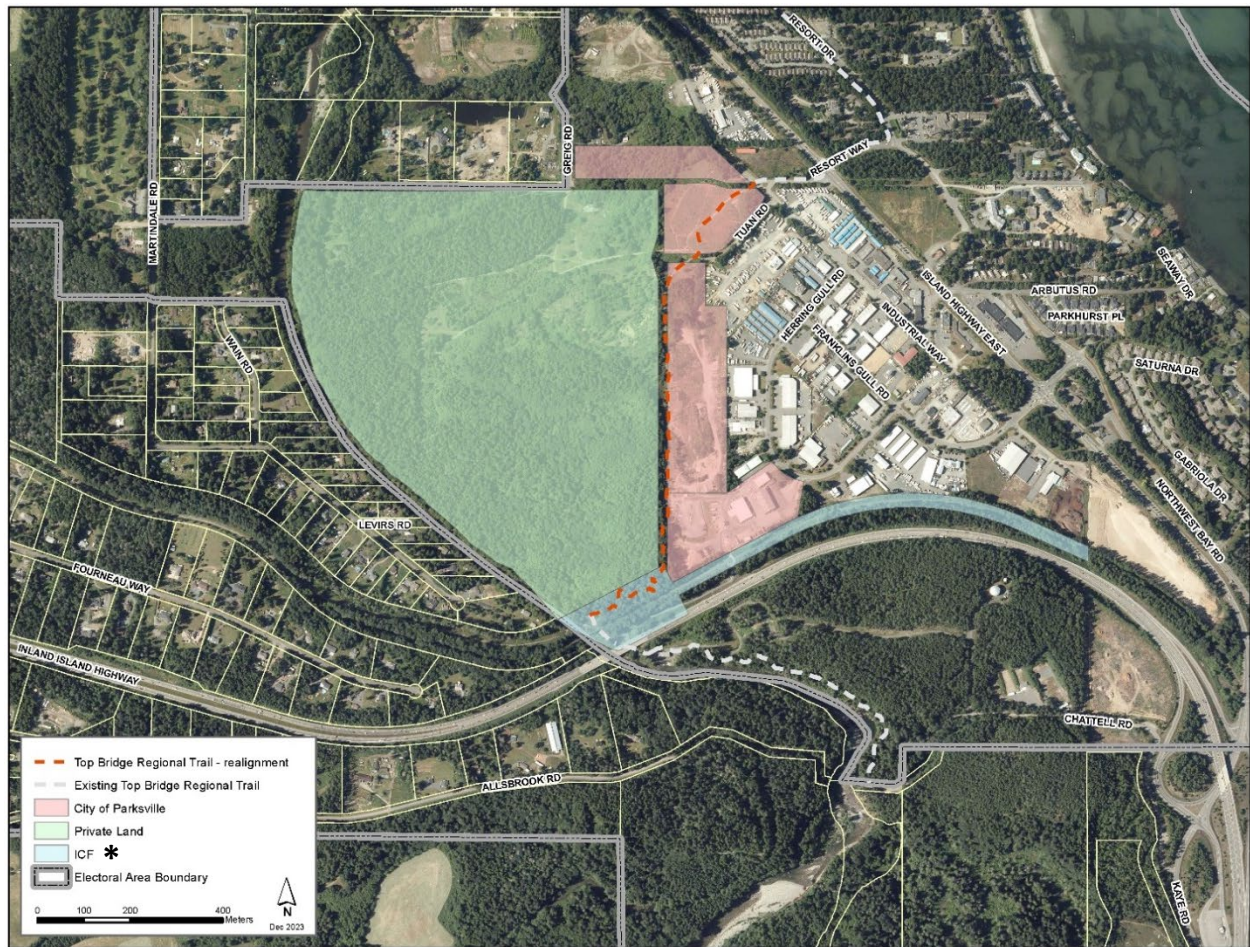
-30-

### **For more information, please contact:**

Rebecca Taylor  
Communications Coordinator  
Regional District of Nanaimo  
250-390-6502  
[rtaylor@rdn.bc.ca](mailto:rtaylor@rdn.bc.ca)

Deb Tardiff  
Manager of Communications  
City of Parksville  
250-954-3073  
[communications@parksville.ca](mailto:communications@parksville.ca)

# Top Bridge Regional Trail New Alignment



\*ICF – Island Corridor Foundation