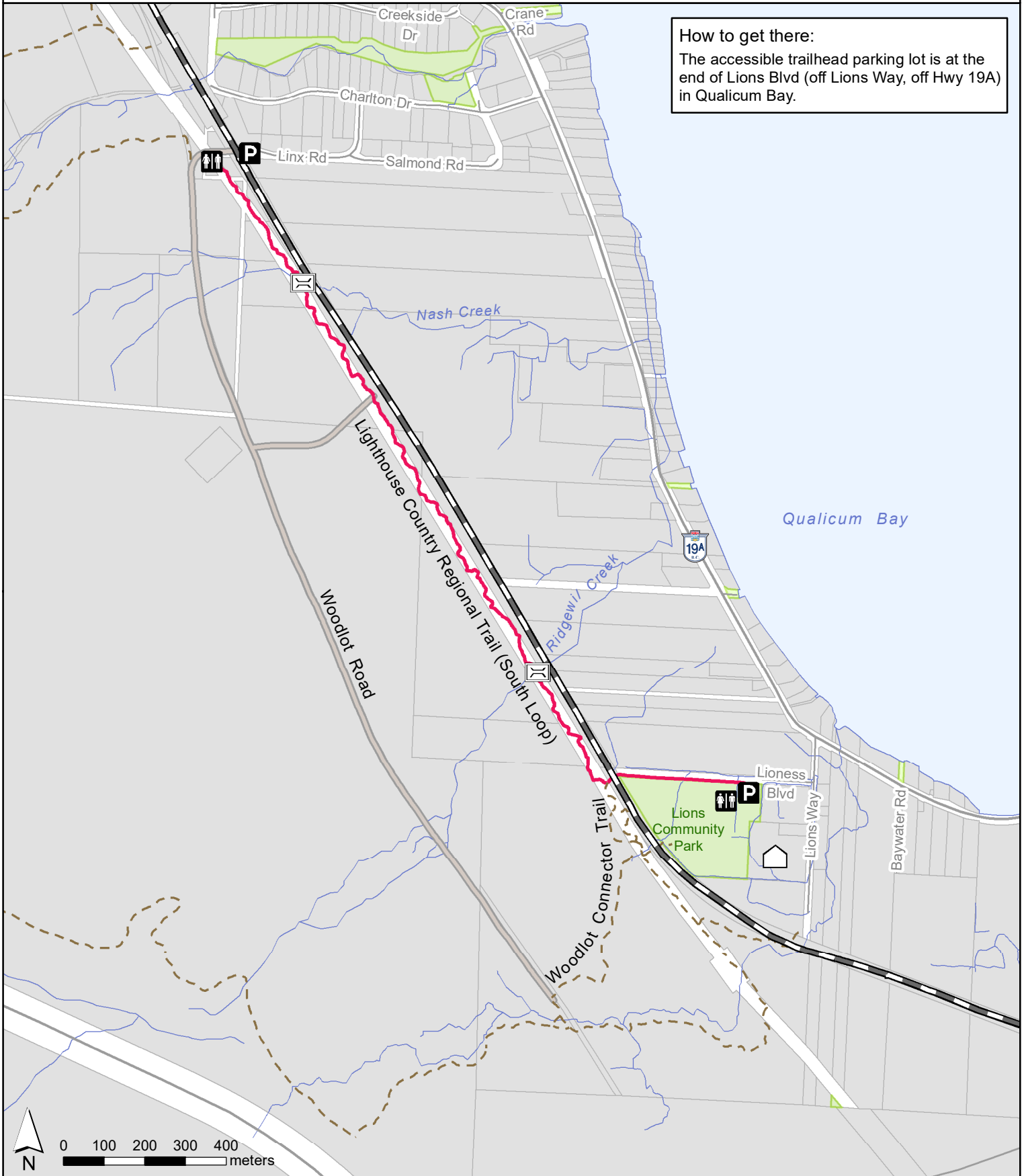


# LIGHTHOUSE COUNTRY REGIONAL TRAIL - SOUTH LOOP

**How to get there:**

The accessible trailhead parking lot is at the end of Lions Blvd (off Lions Way, off Hwy 19A) in Qualicum Bay.



- |                  |                             |   |             |                |
|------------------|-----------------------------|---|-------------|----------------|
| <b>P</b> Parking | Bridge                      | RDN Recreational Trail (horses not permitted) | Gravel Road | Community Park |
| Vault Toilet     | Lighthouse Community Centre | Other Trail                                   | Railway     |                |