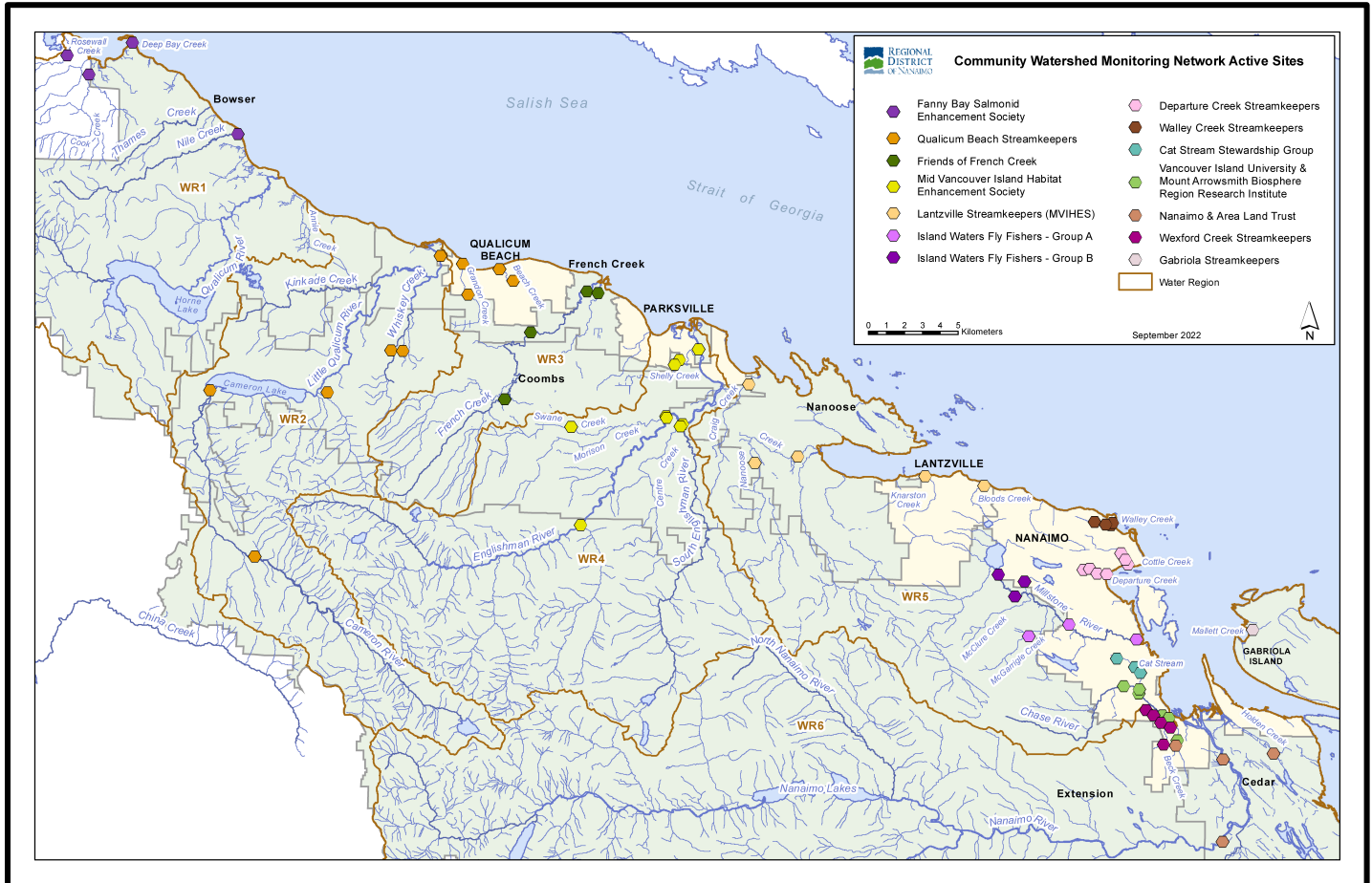


# Community Watershed Monitoring Network

## 2022 Results by Water Region



Included in Water Region (WR) 3 package:

1. CWMN WR3 sample sites
2. How to interpret a box plot
3. Box Plot Comparison – 2022 data to previous years: *displayed by parameter (Turbidity, Dissolved Oxygen, Temperature, Conductivity) & sample period (summer, fall)*
4. QBS CWMN map of sample sites
5. FFCCS CWMN map of sample sites



Water Region 3  
sampled by:  
**Qualicum Beach Streamkeepers  
(QBS)**  
&  
**Friends of French Creek  
Conservation Society (FFCCS)**



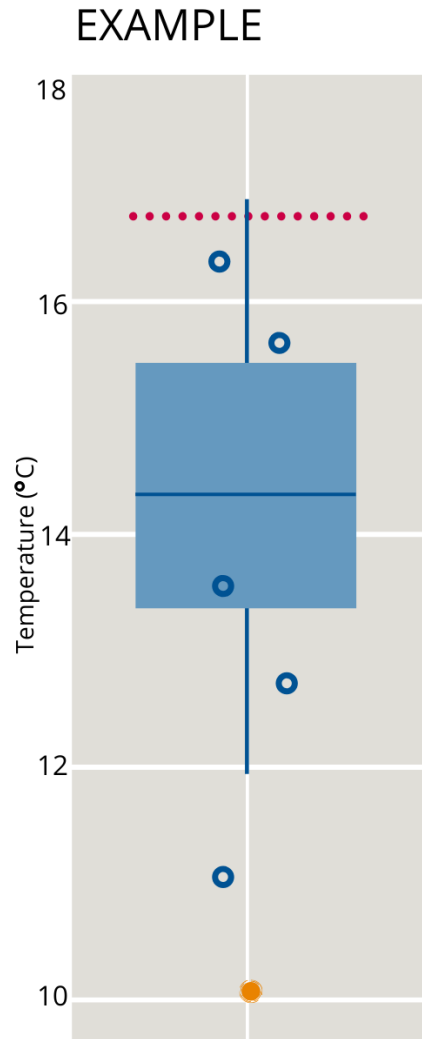
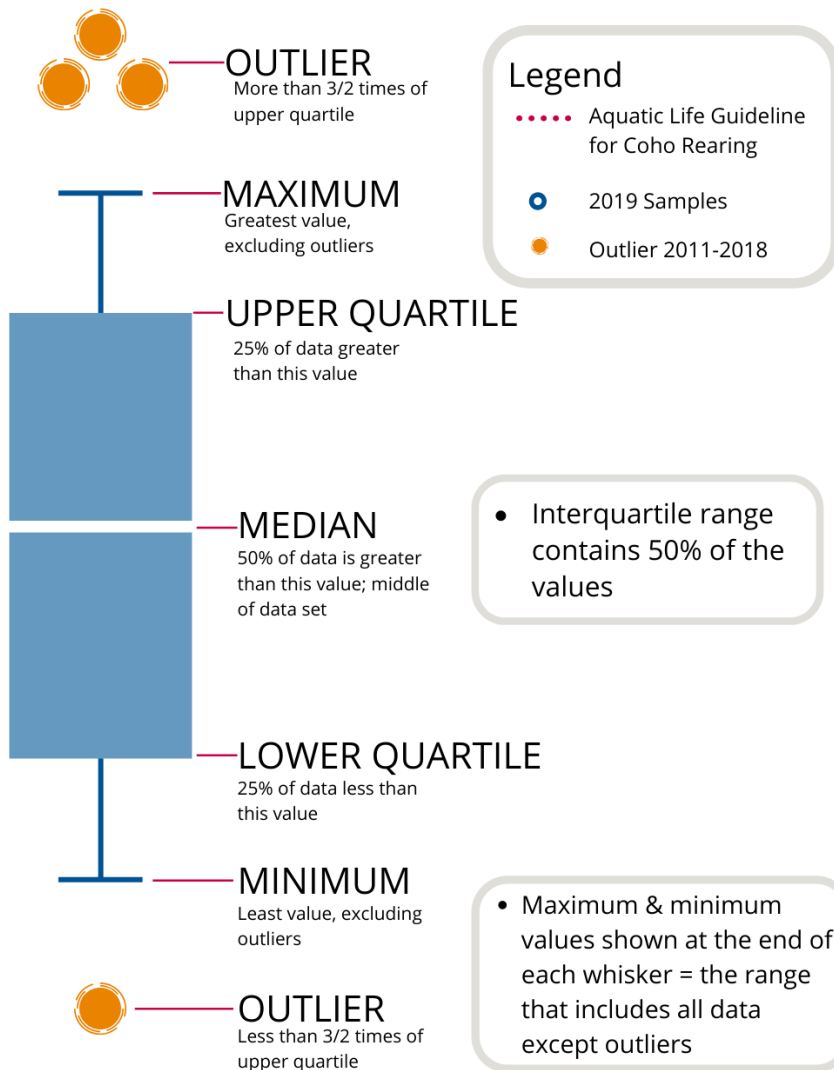
## WR3 CWMN Sample Sites:

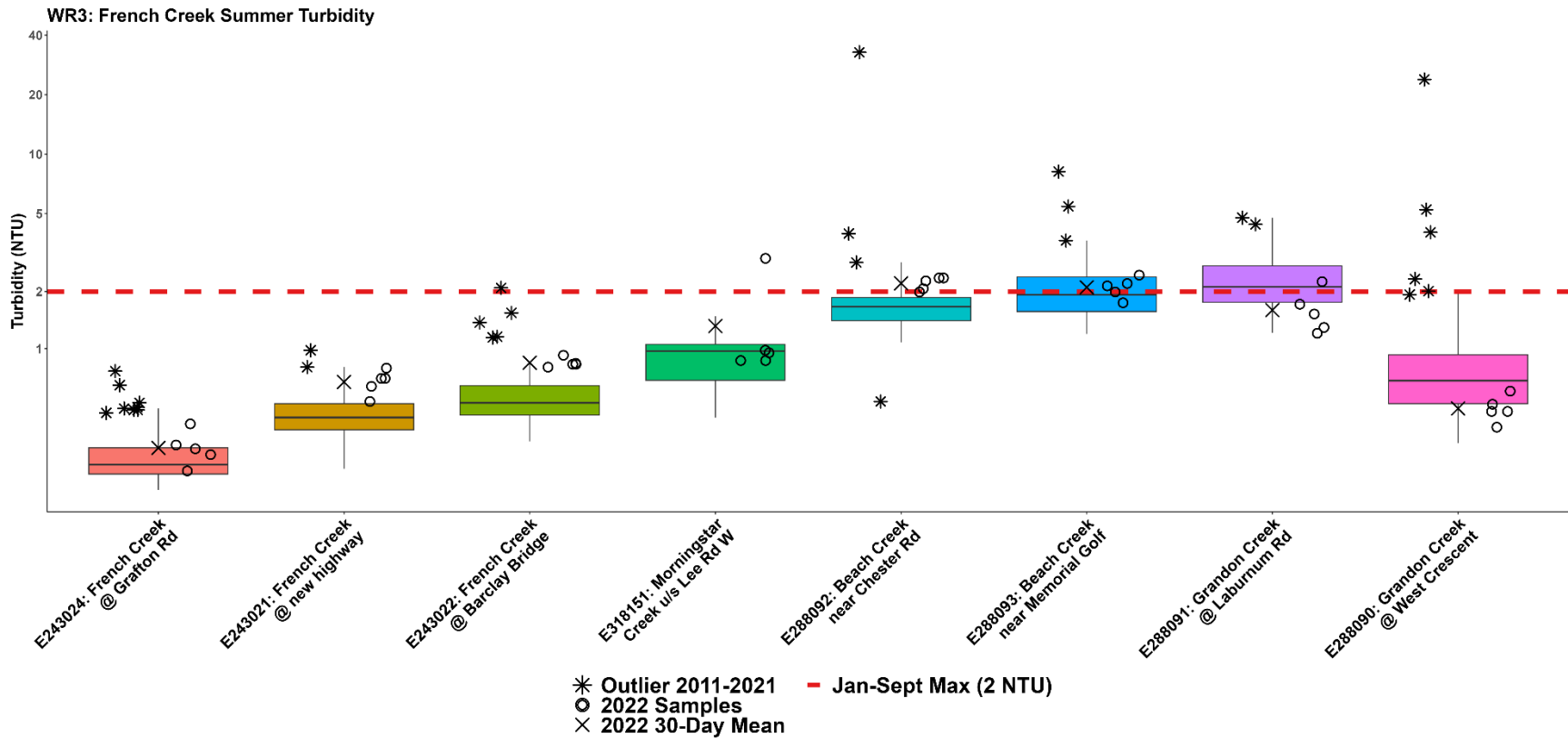
The table below shows the sites monitored by each of the streamkeeper organizations, as well as the number of years and which years a site was sampled. The number of years is important to keep in mind when interpreting the box plots as the plot for each site may contain a slightly different temporal range.

Group	EMS ID	Geographic Description	Years Sampled	Years Monitored
QBS	E288091	Grandon Creek at Laburnum Road	12	2011 – present
QBS	E288090	Grandon Creek at West Crescent (Caissons)	12	2011 – present
QBS	E288092	Beach Creek near Chester Road at Hemsworth Road	12	2011 – present
QBS	E288093	Beach Creek near Memorial Golf Course Pond	12	2011 – present
FFCCS	E243024	French Creek at Grafton Road	12	2011 – present
FFCCS	E243021	French Creek at new highway	12	2011 – present
FFCCS	E243022	French Creek at Barclay Bridge	12	2011 – present
FFCCS	E318151	Morningstar Creek 100m u/s Lee Rd W	4	2019 – present



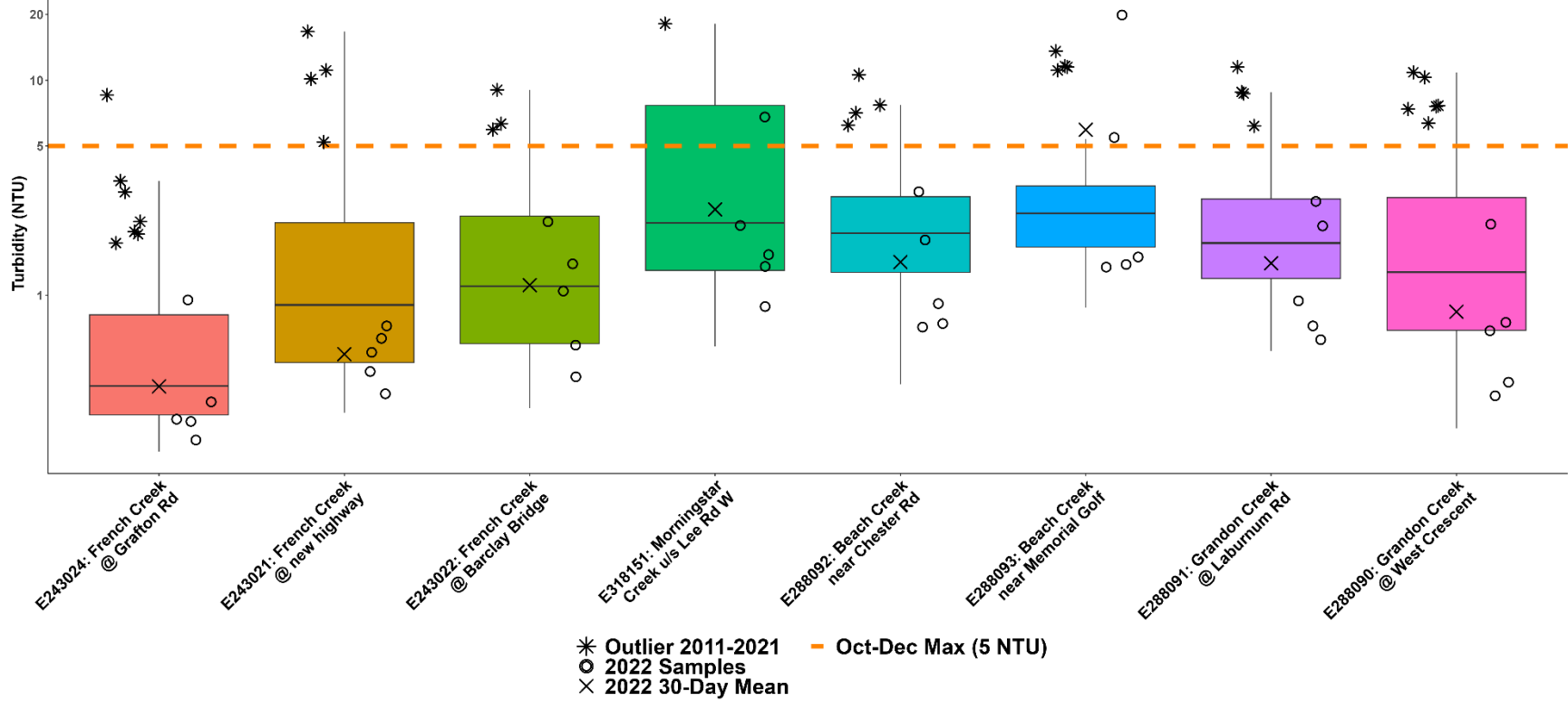
# How to Interpret a Box Plot:



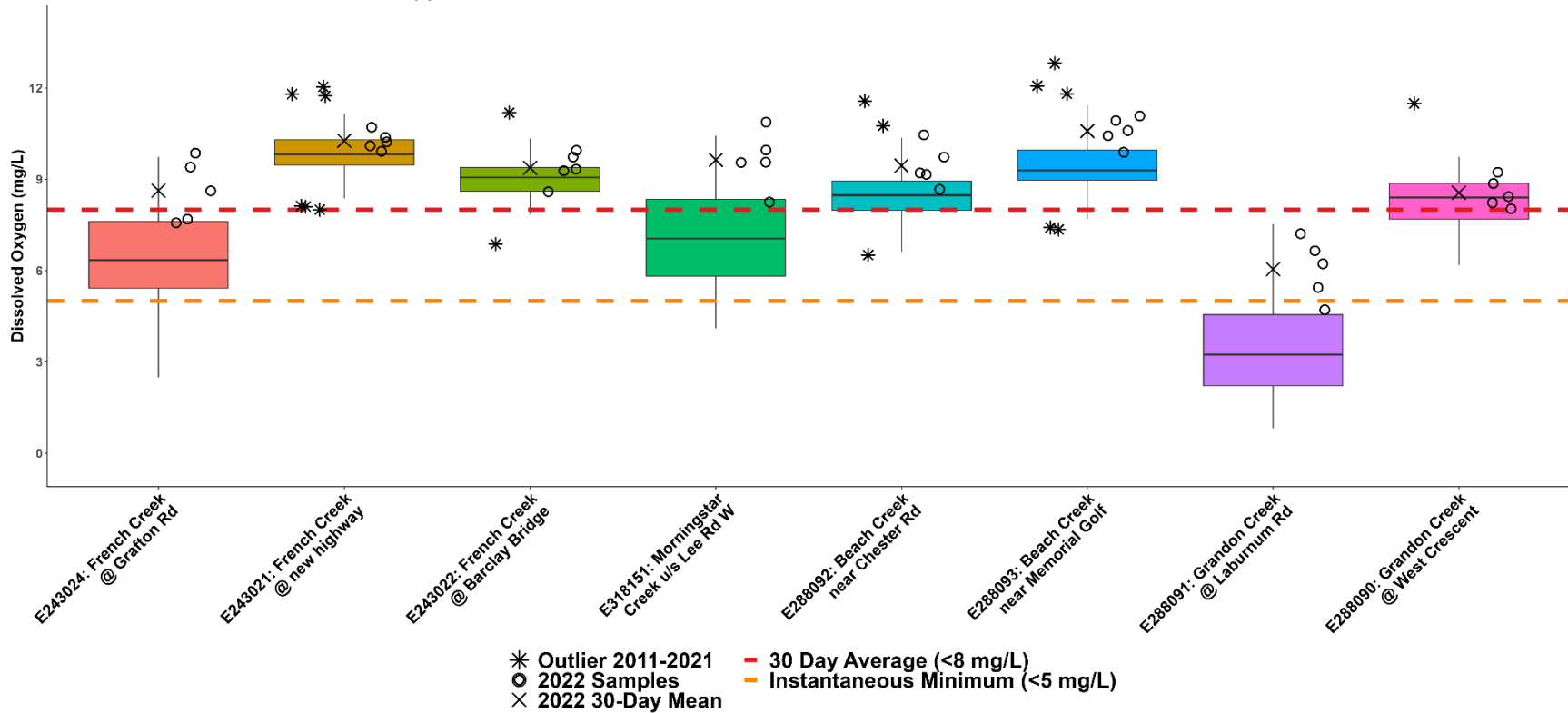




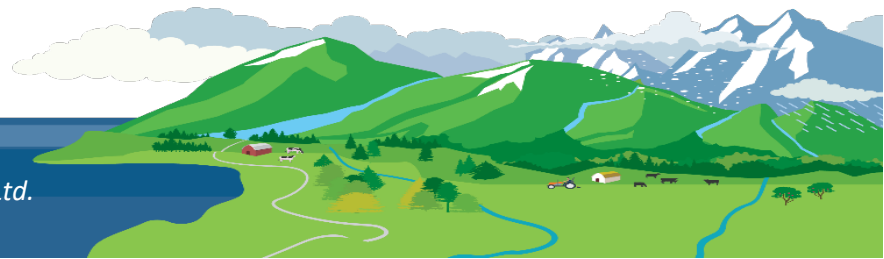
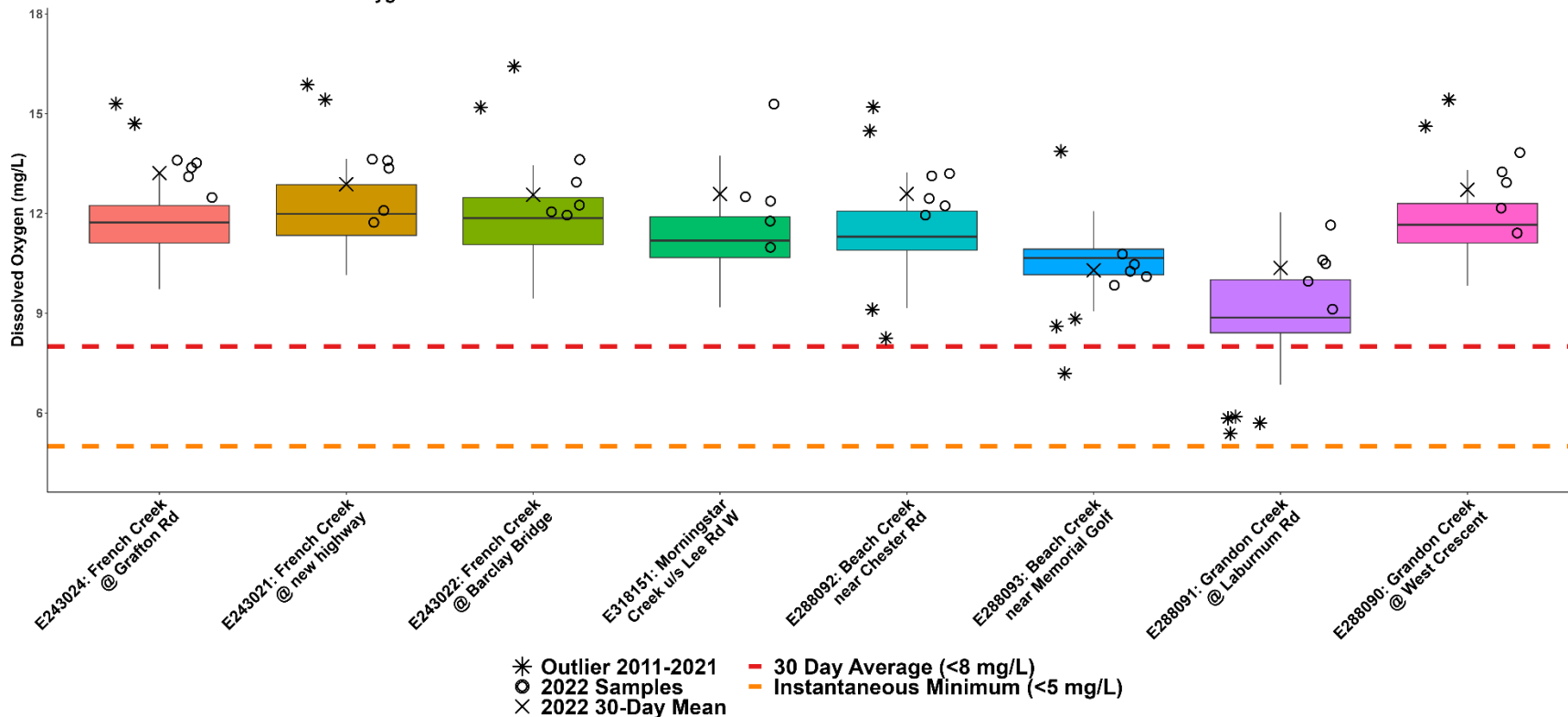
WR3: French Creek Fall Turbidity



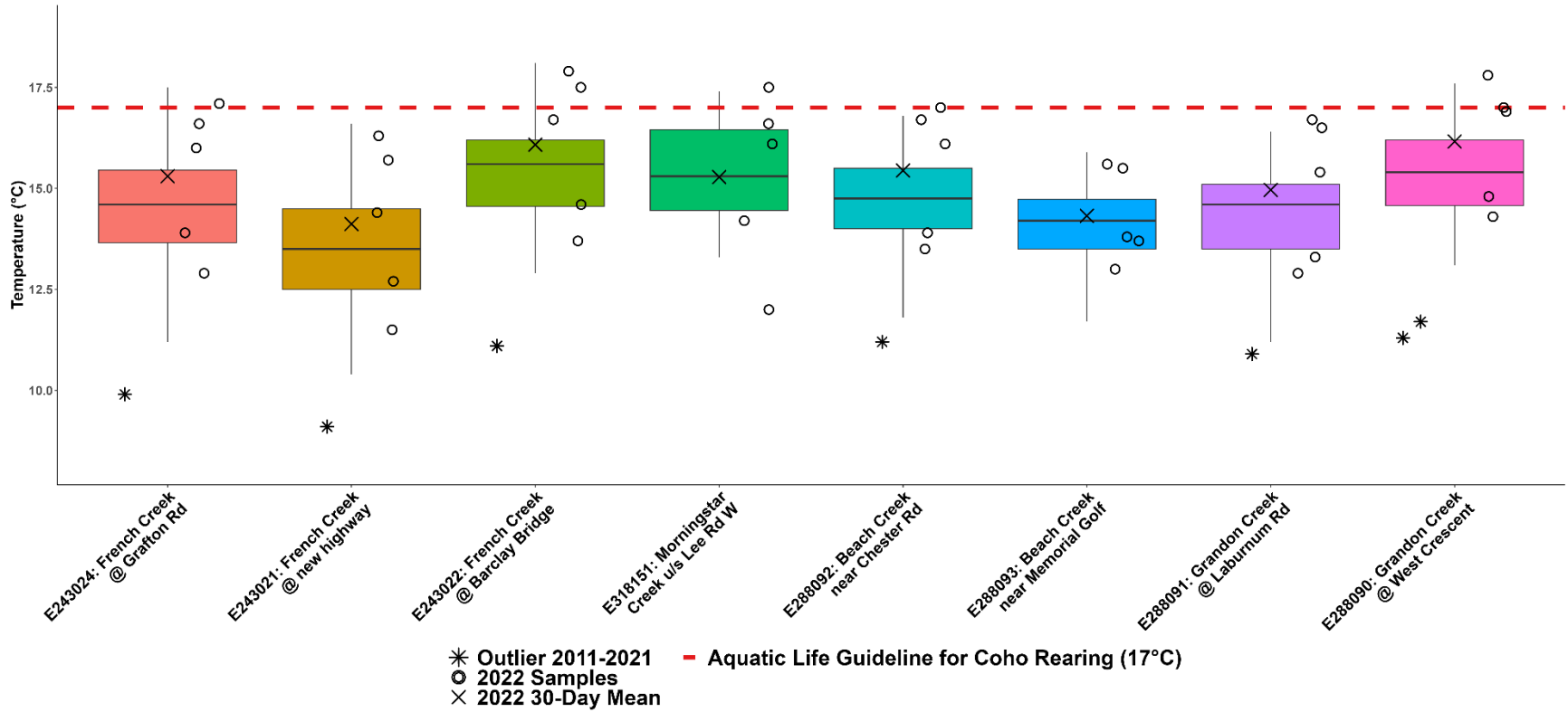
WR3: French Creek Summer Dissolved Oxygen



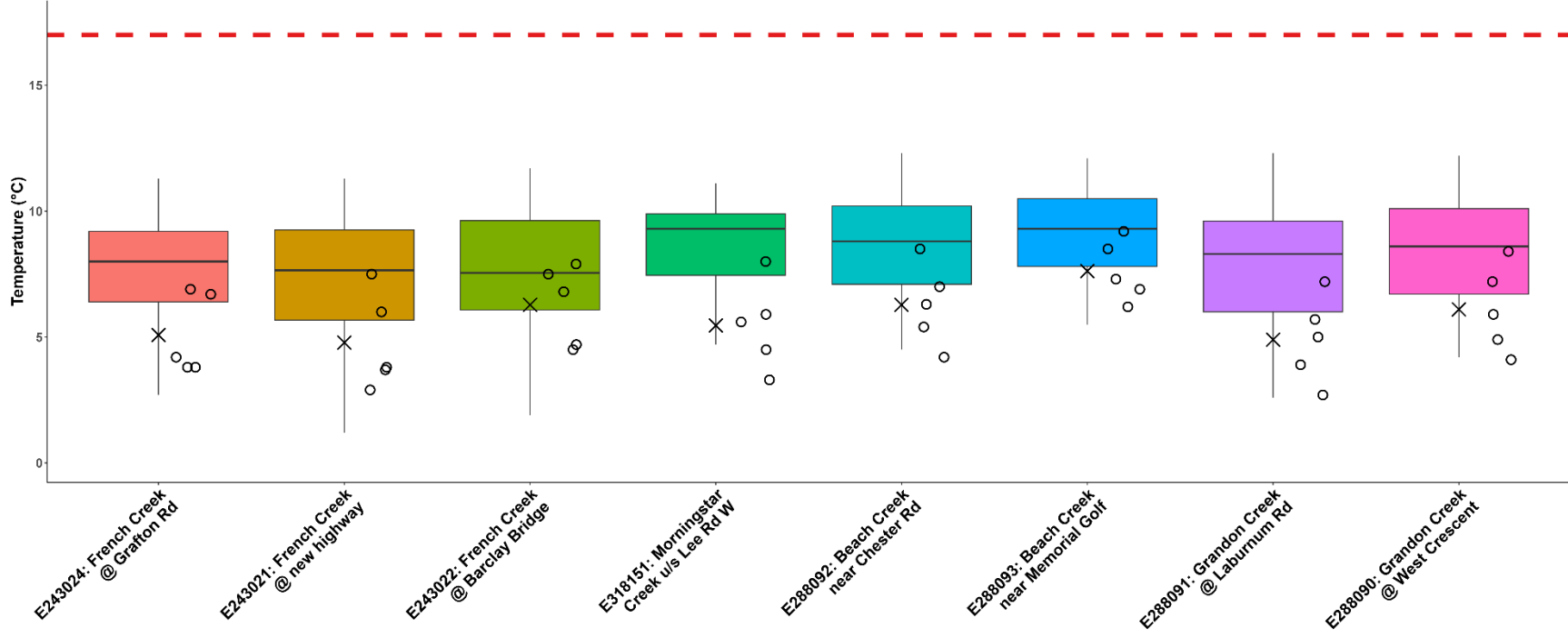
### WR3: French Creek Fall Dissolved Oxygen



WR3: French Creek Summer Temperature

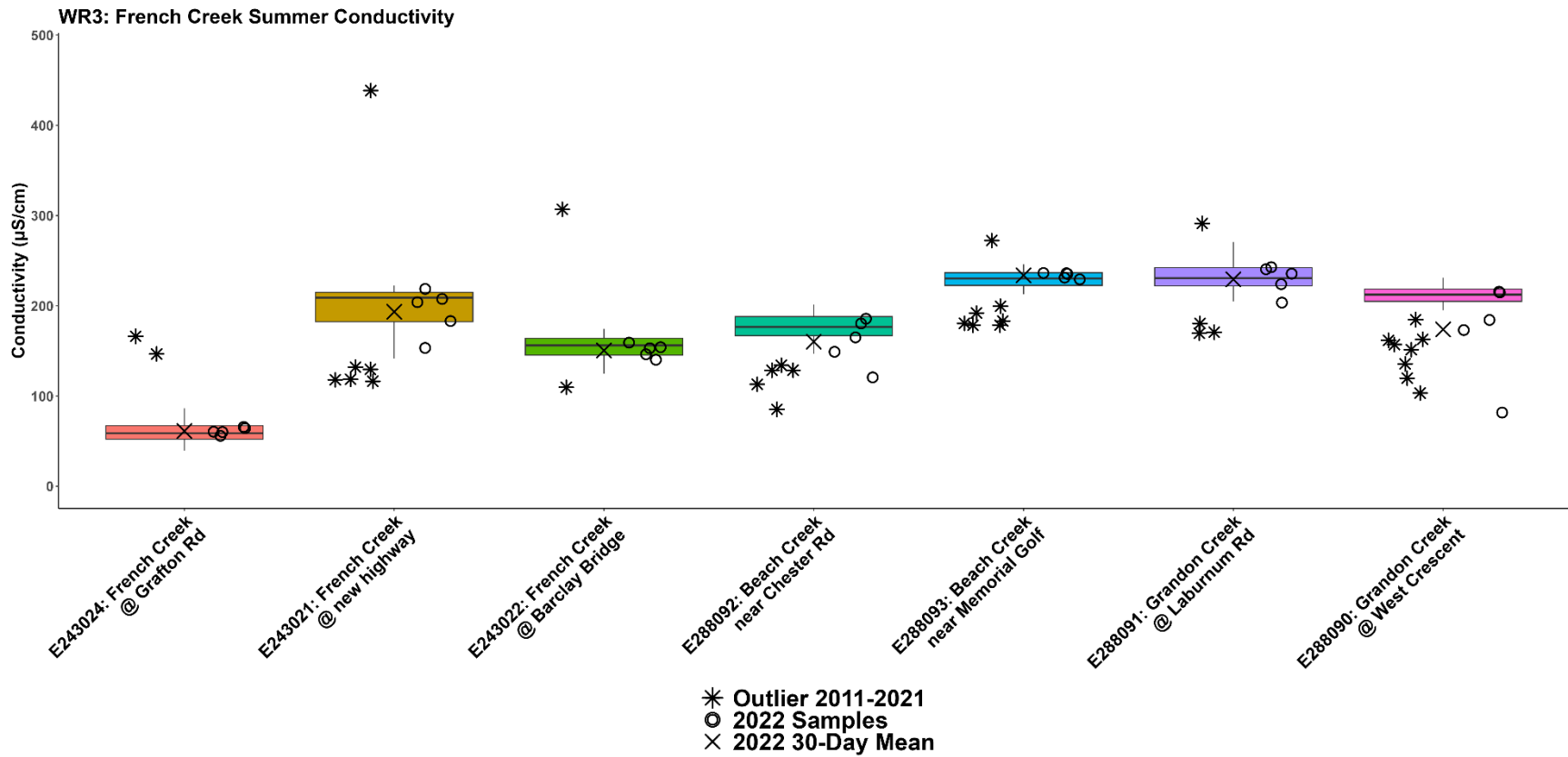


WR3: French Creek Fall Temperature

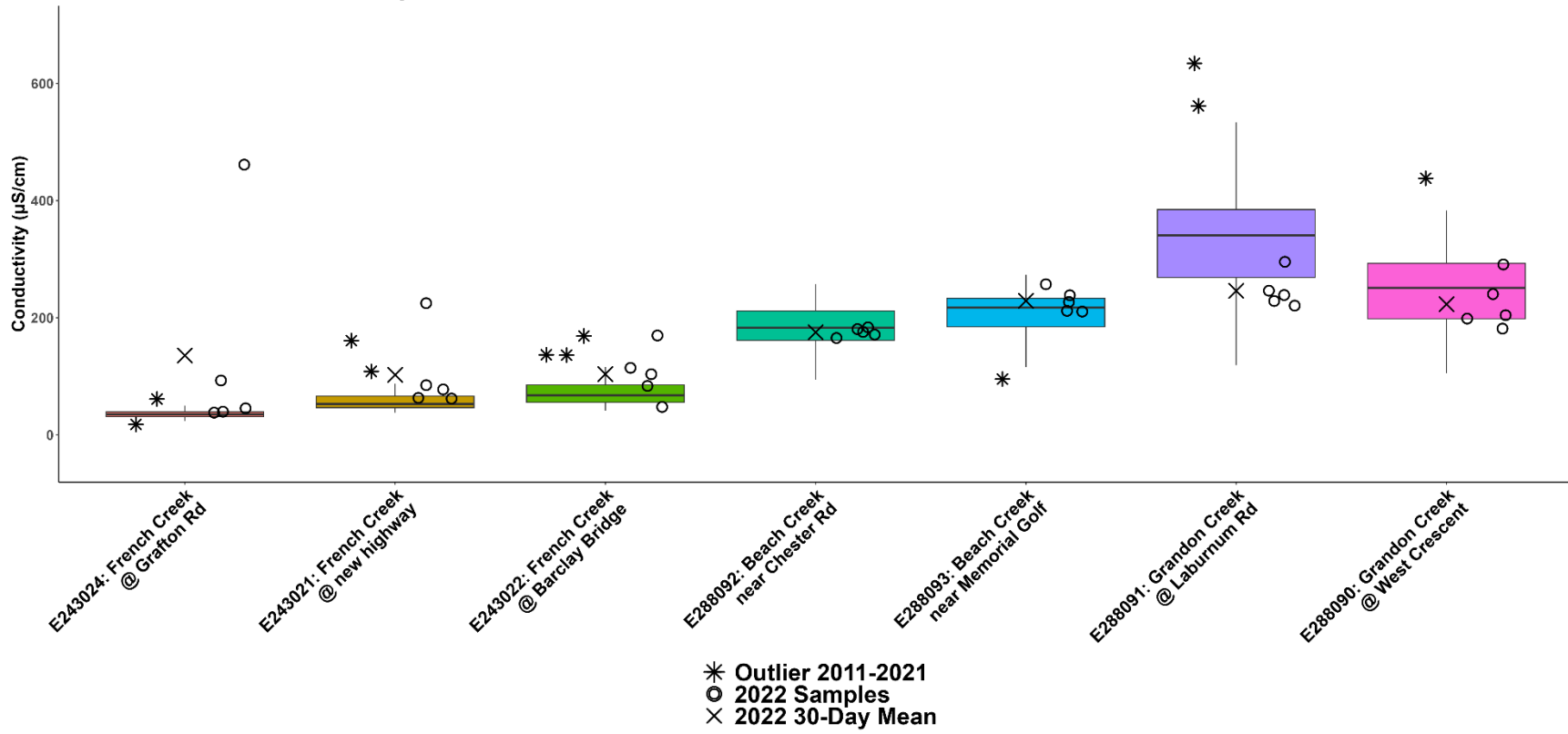


\* Outlier 2011-2021  
 ○ 2022 Samples  
 × 2022 30-Day Mean  
 - Aquatic Life Guideline for Coho Rearing (17°C)

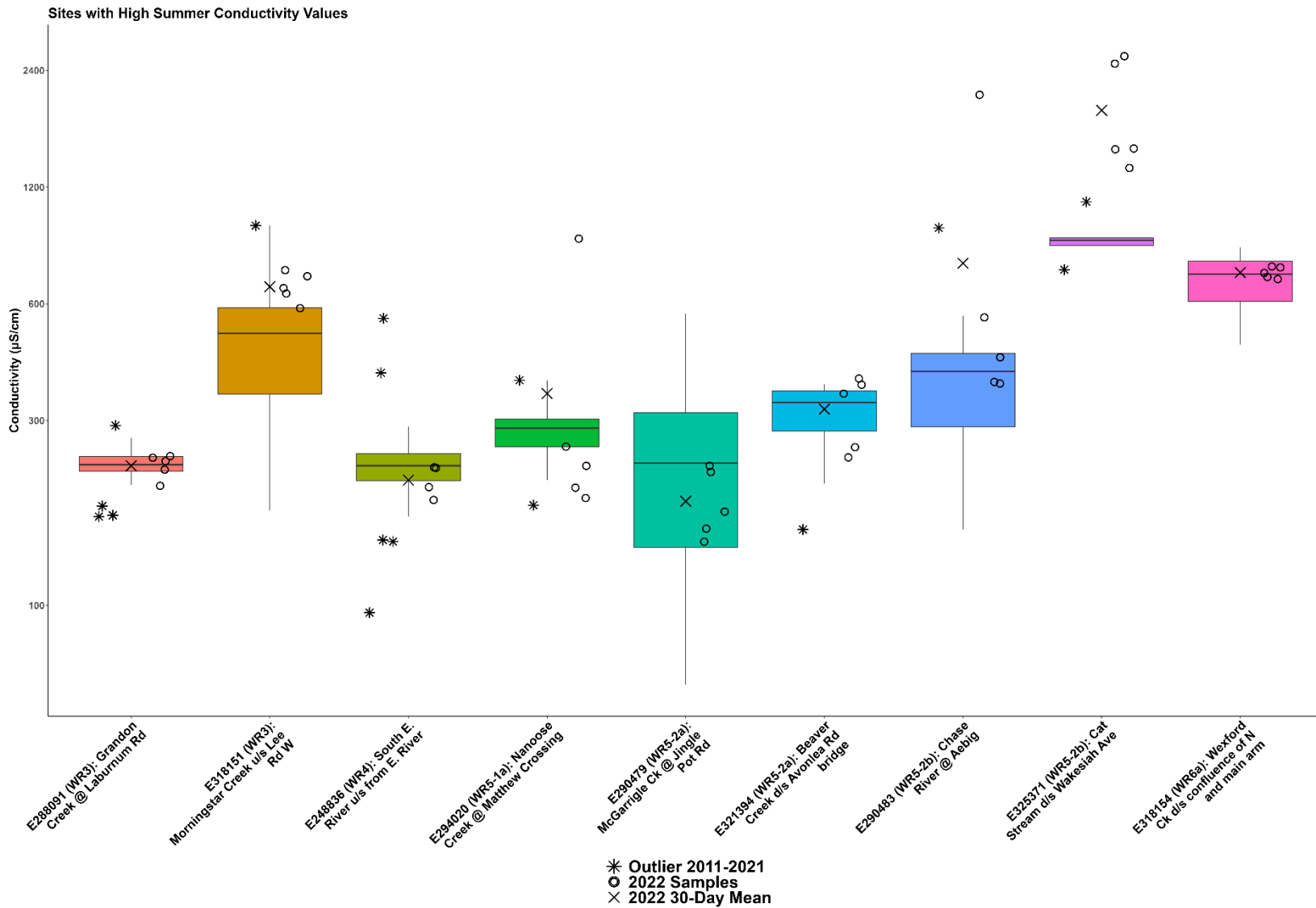




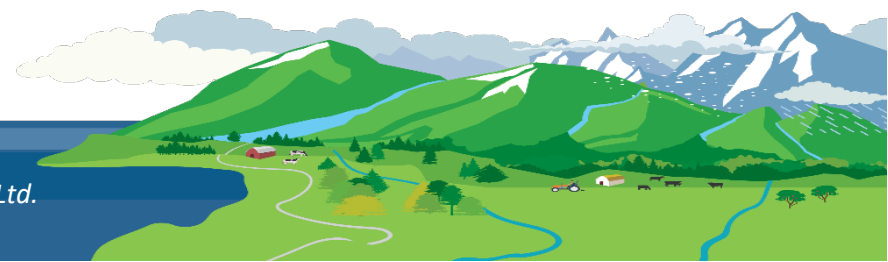
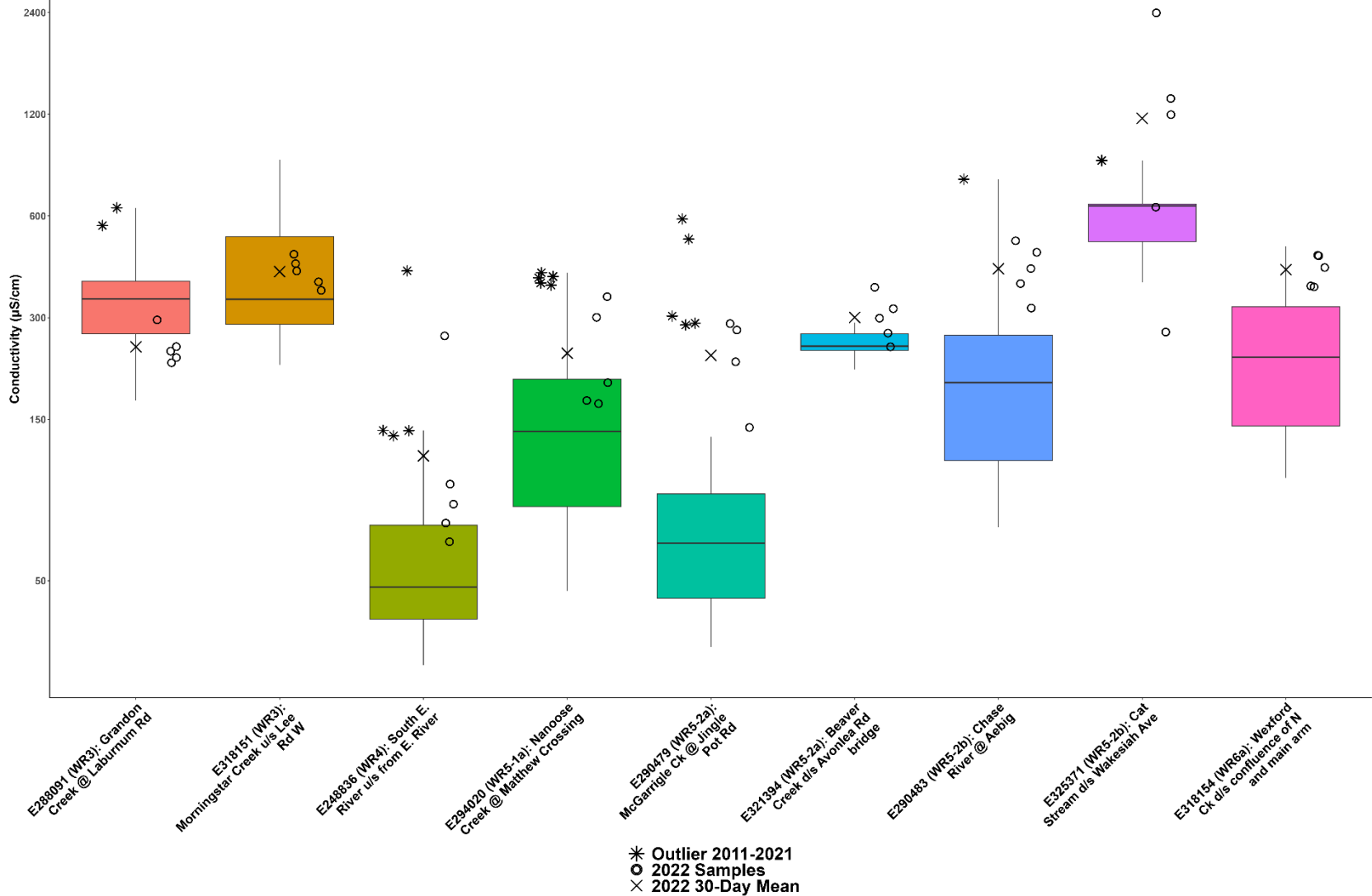
**WR3: French Creek Fall Conductivity**



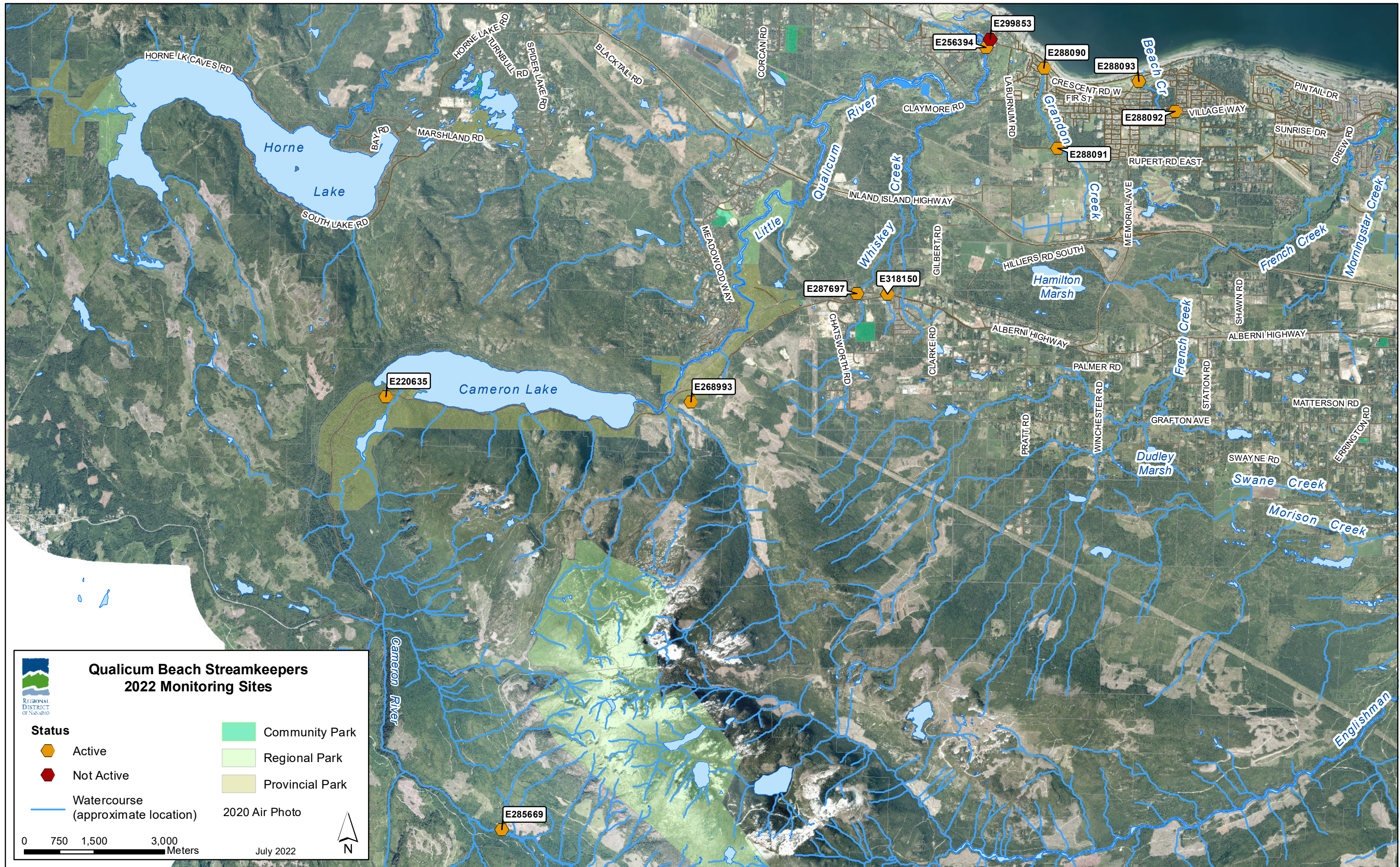




Sites with High Fall Conductivity Values



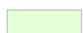

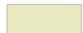







**Qualicum Beach Streamkeepers  
2022 Monitoring Sites**

REGIONAL DISTRICT OF NANAIMO

<b>Status</b>	 Community Park
 Active	 Regional Park
 Not Active	 Provincial Park
 Watercourse (approximate location)	2020 Air Photo

0 750 1,500 3,000 Meters

July 2022






N





**Friends of French Creek  
2022 Monitoring Sites**

REGIONAL DISTRICT OF NANAIMO

<b>Status</b>	 Community Park
 Active	
 Not Active	
 Watercourse (approximate location)	
 2020 Air Photo	

0 250 500 1,000 Meters

July 2022

N