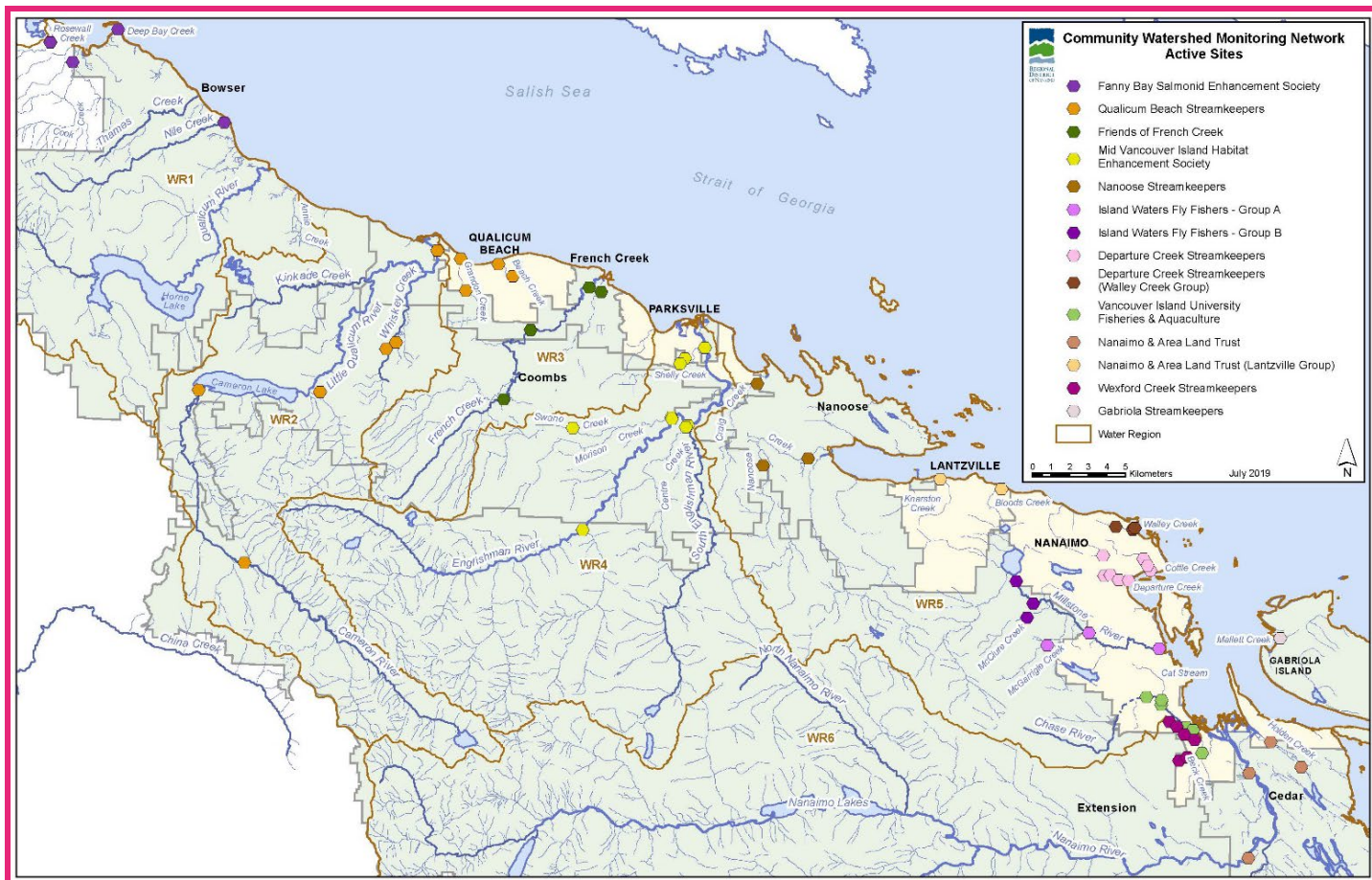


Community Watershed Monitoring Network 2019

Results by Water Region



Included in your Water Region package:

1. CWMN sample sites in Water Region (WR) 5-2
2. How to interpret a box plot
3. Box Plot Comparison 2019 data to previous years:

Graphs displayed per parameter (Temperature, Dissolved Oxygen, Turbidity, Conductivity) per sample period (summer and fall)

4. IWFF CWMN map of sample sites
5. VIU CWMN map of sample sites



Water Region 5-2
sampled by:

Island Waters Fly Fishers (IWFF)
&
**Vancouver Island University
Coastal Hydrology & Climate
Change Research Lab (VIU)**



CWMN Sample Sites in WR 5-2:

The table below shows the group(s) and sites monitored, as well as the number of years and which years a site was sampled. The number of years is important to keep in mind when interpreting the box plots as the plot for each site may contain a slightly different temporal range.

Group	EMS ID	Geographic Description	Years Sampled*	Years Monitored
IWFF	E290477	Benson Creek @ Biggs Rd.	4	2012-2014; Not Monitored 2015 - 2018; 2019 - present
IWFF	E290478	Millstone River @ Biggs Road	8	2012 - present
IWFF	E306294	Millstone River @ Jingle Pot Road	4	2016 - present
IWFF	E309187	McClure Creek @ Montessori School	3	2017 - present
IWFF	E290479	McGarrigle Ck @ Jingle Pot Rd	8	2012 - present
IWFF	E290480	Millstone River @ East Wellington	8	2012 - present
IWFF	E290481	Millstone River in Barsby Park	8	2012 - present
VIU	E290486	Cat Stream @ Park above confluence with Chase River	8	2012 - present
VIU	E290484	Chase River @Howard below colliery dam	8	2012 - present
VIU	E290485	Chase River @ Park Ave	8	2012 - present
VIU	E290483	Chase River @ Aebig	8	2012 - present
VIU	E309280	Chase River @ Estuary Park	3	2017 - present

*The number of years sampled up to and including 2019.



How to Interpret a Box Plot:



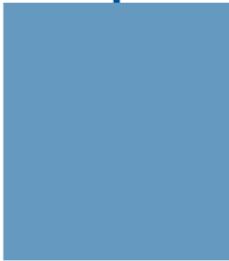
OUTLIER
More than 3/2 times of upper quartile

Legend

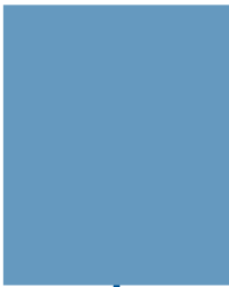
- Aquatic Life Guideline for Coho Rearing
- 2019 Samples
- Outlier 2011-2018



MAXIMUM
Greatest value, excluding outliers



UPPER QUARTILE
25% of data greater than this value



MEDIAN
50% of data is greater than this value; middle of data set

- Interquartile range contains 50% of the values



LOWER QUARTILE
25% of data less than this value

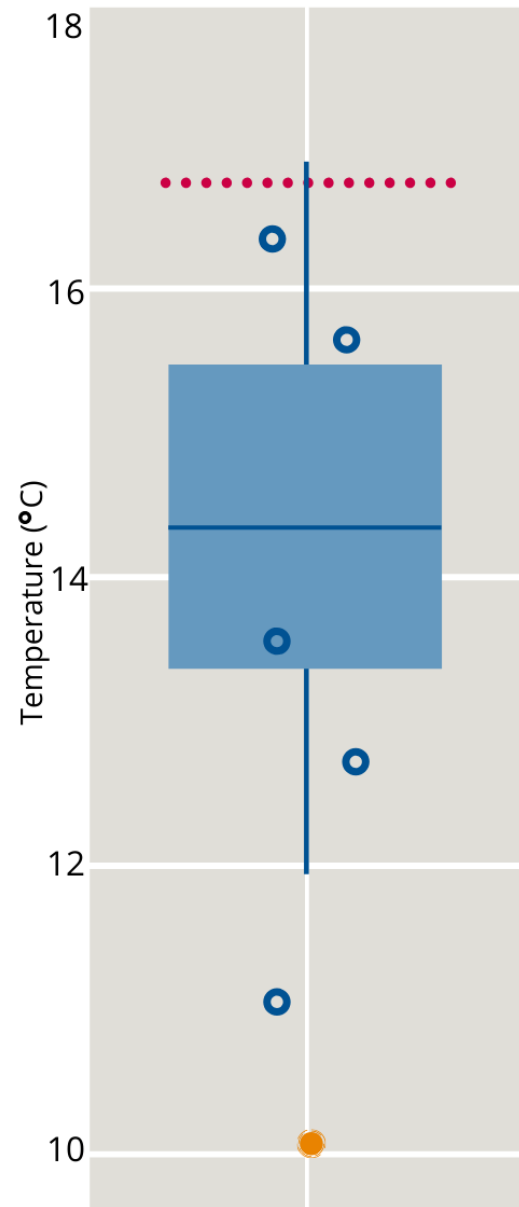
MINIMUM
Least value, excluding outliers



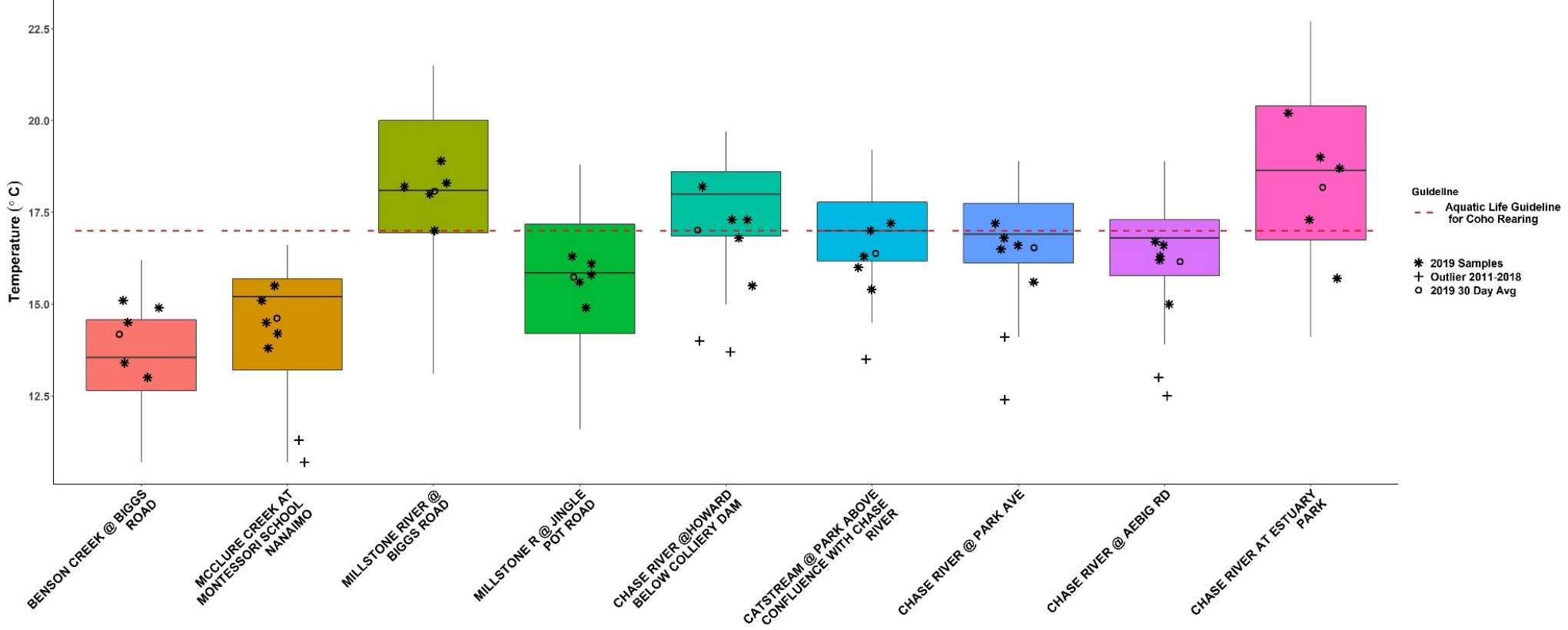
OUTLIER
Less than 3/2 times of upper quartile

- Maximum & minimum values shown at the end of each whisker = the range that includes all data except outliers

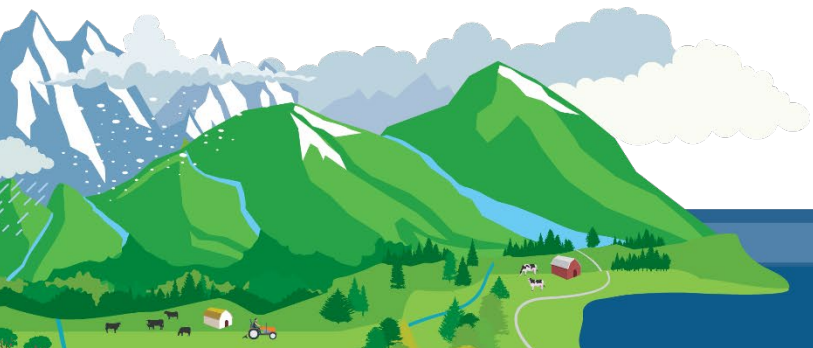
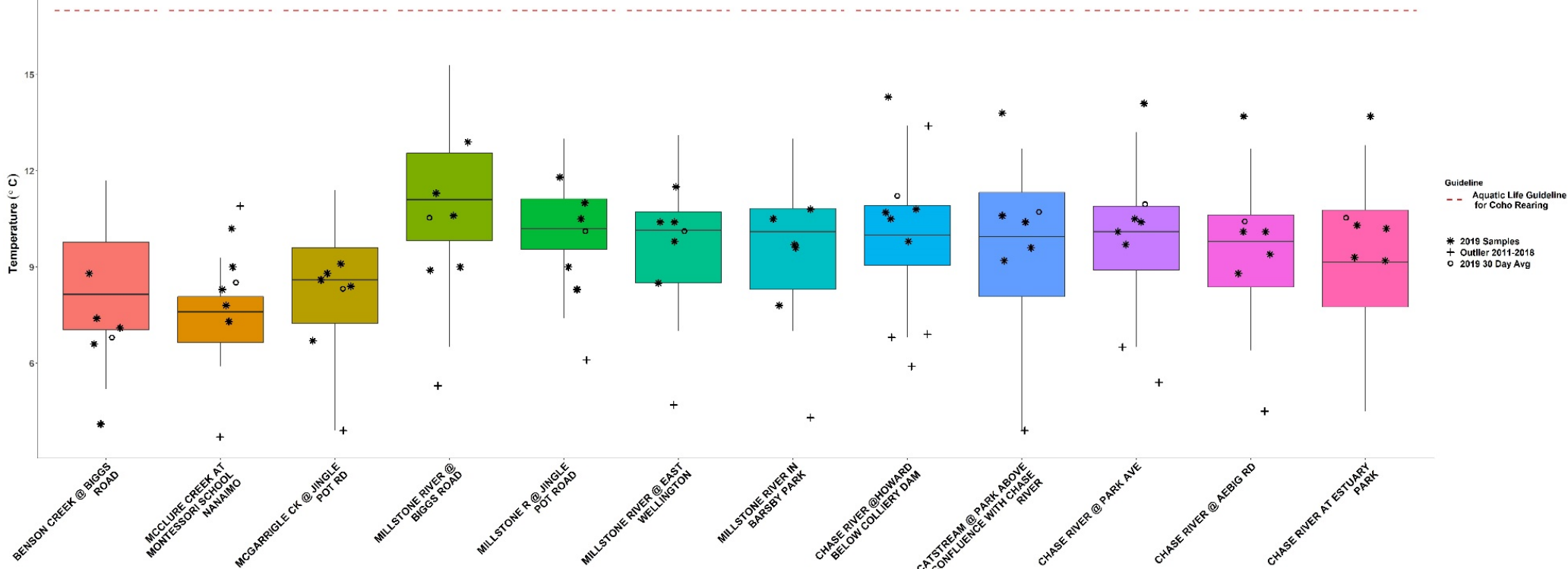
EXAMPLE



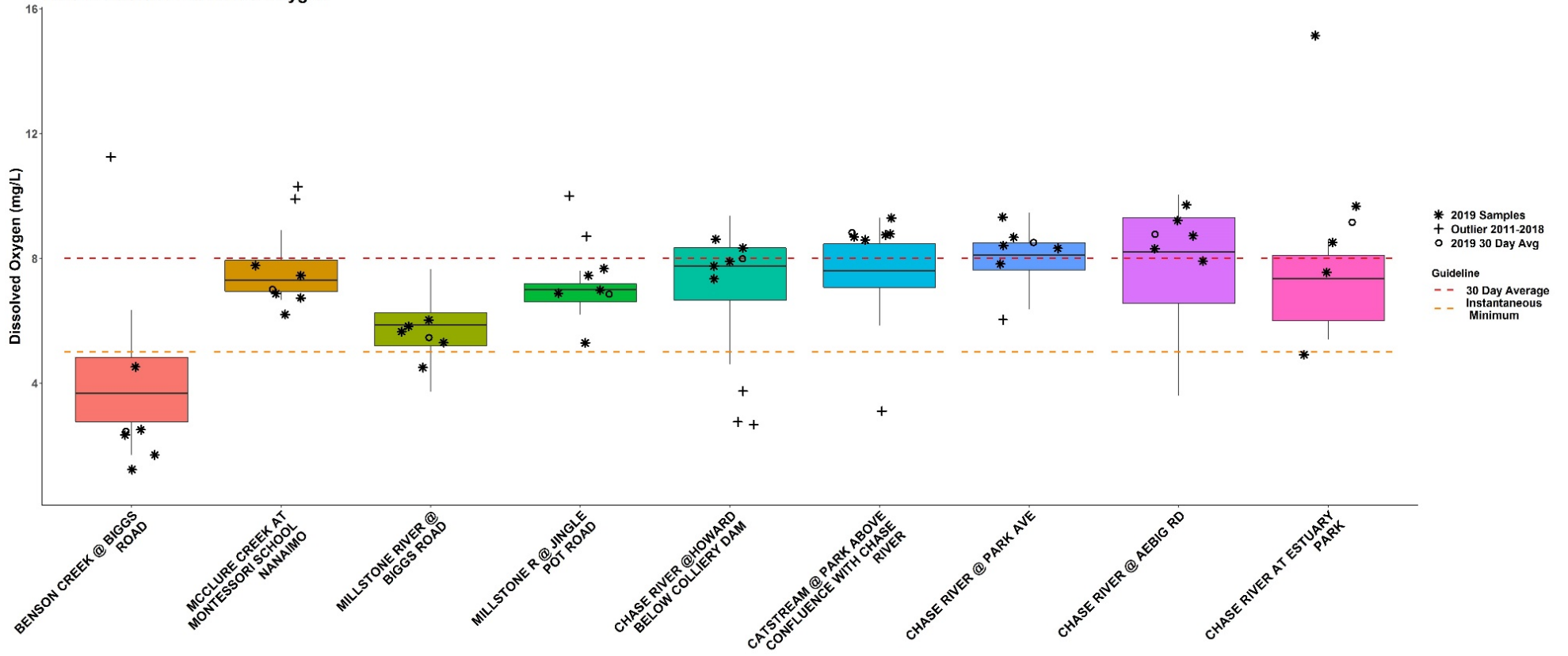
WR5-2 Summer Temperature



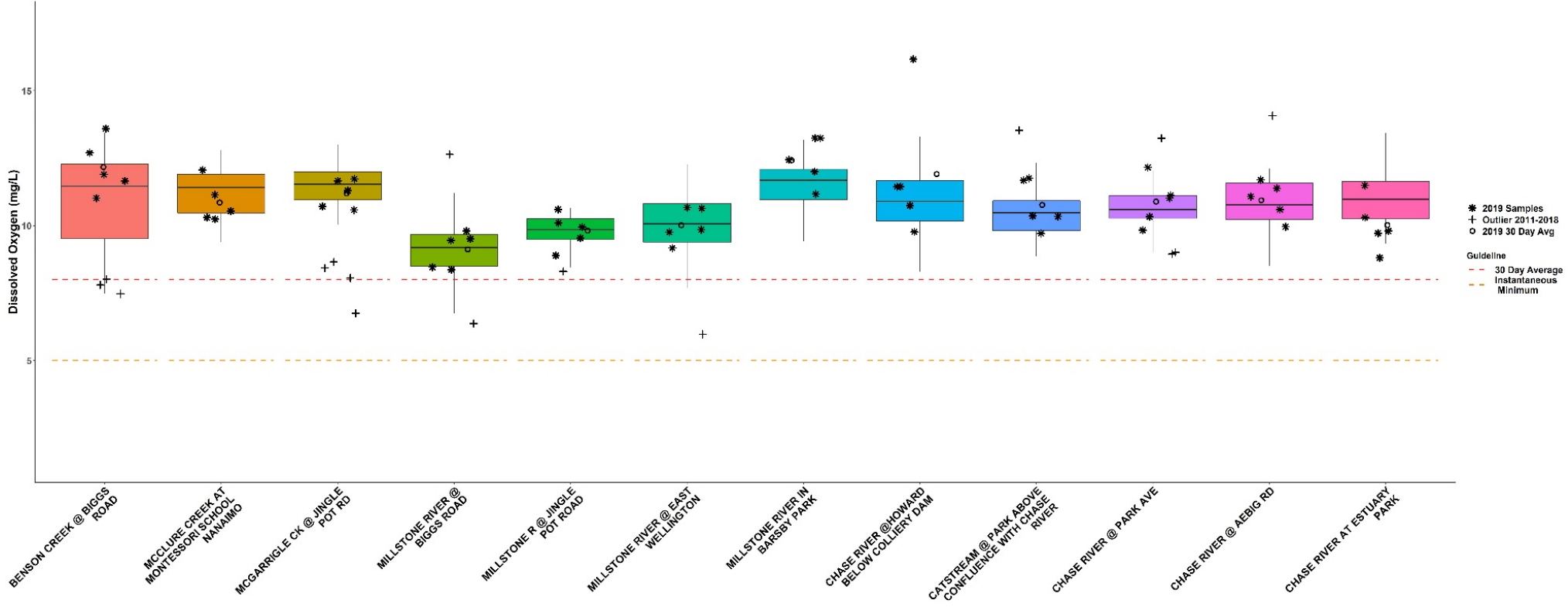
WR5-2 Fall Temperature



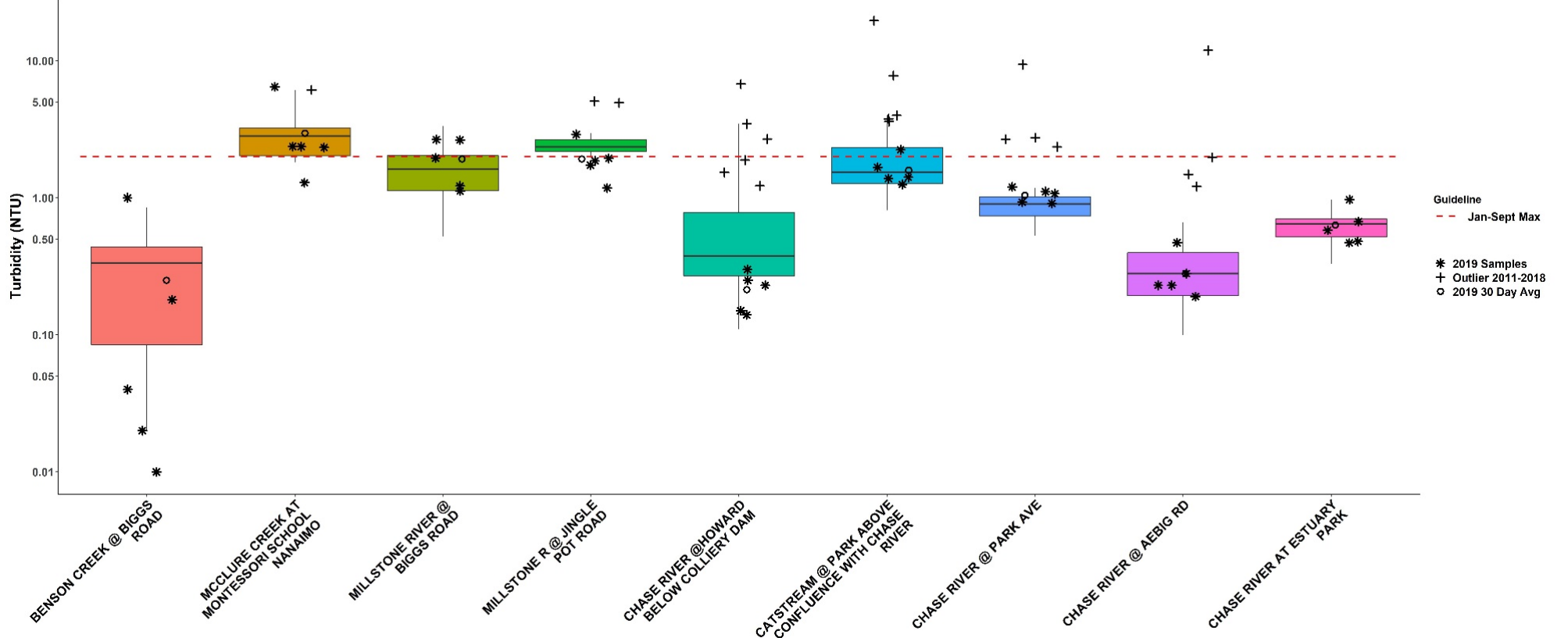
WR5-2 Summer Dissolved Oxygen



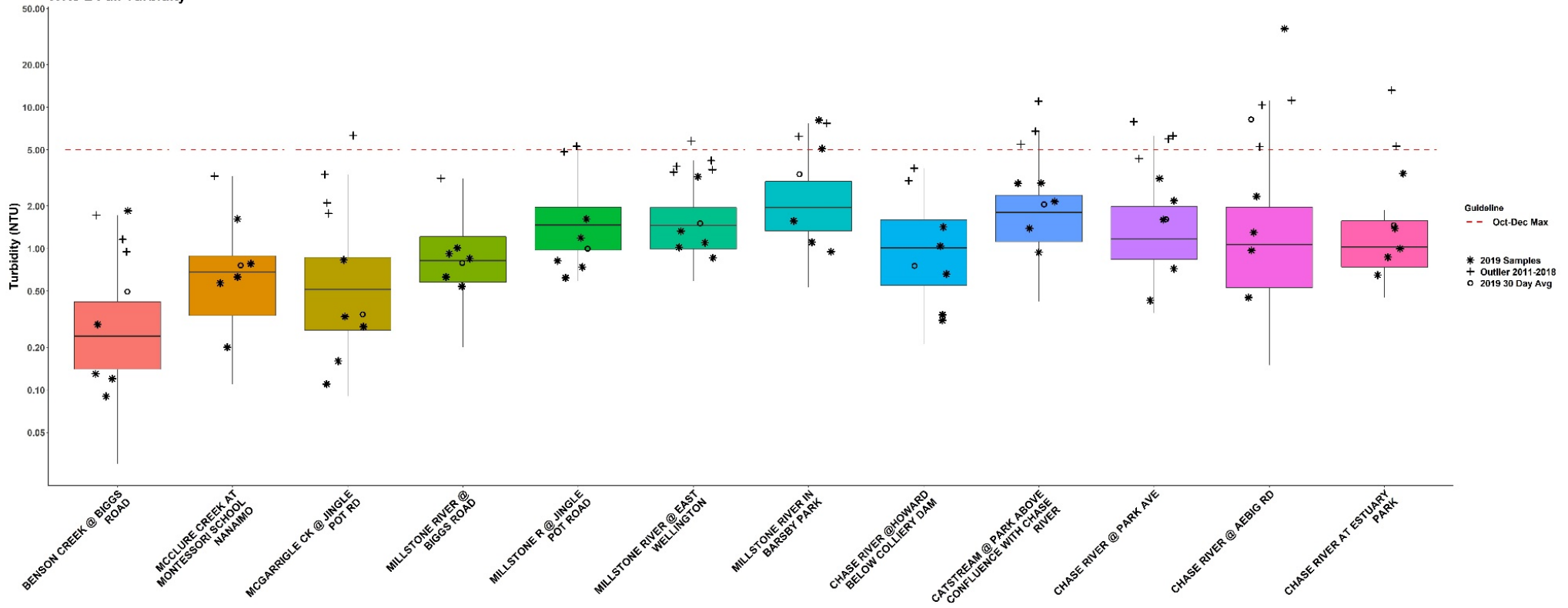
WR5-2 Fall Dissolved Oxygen



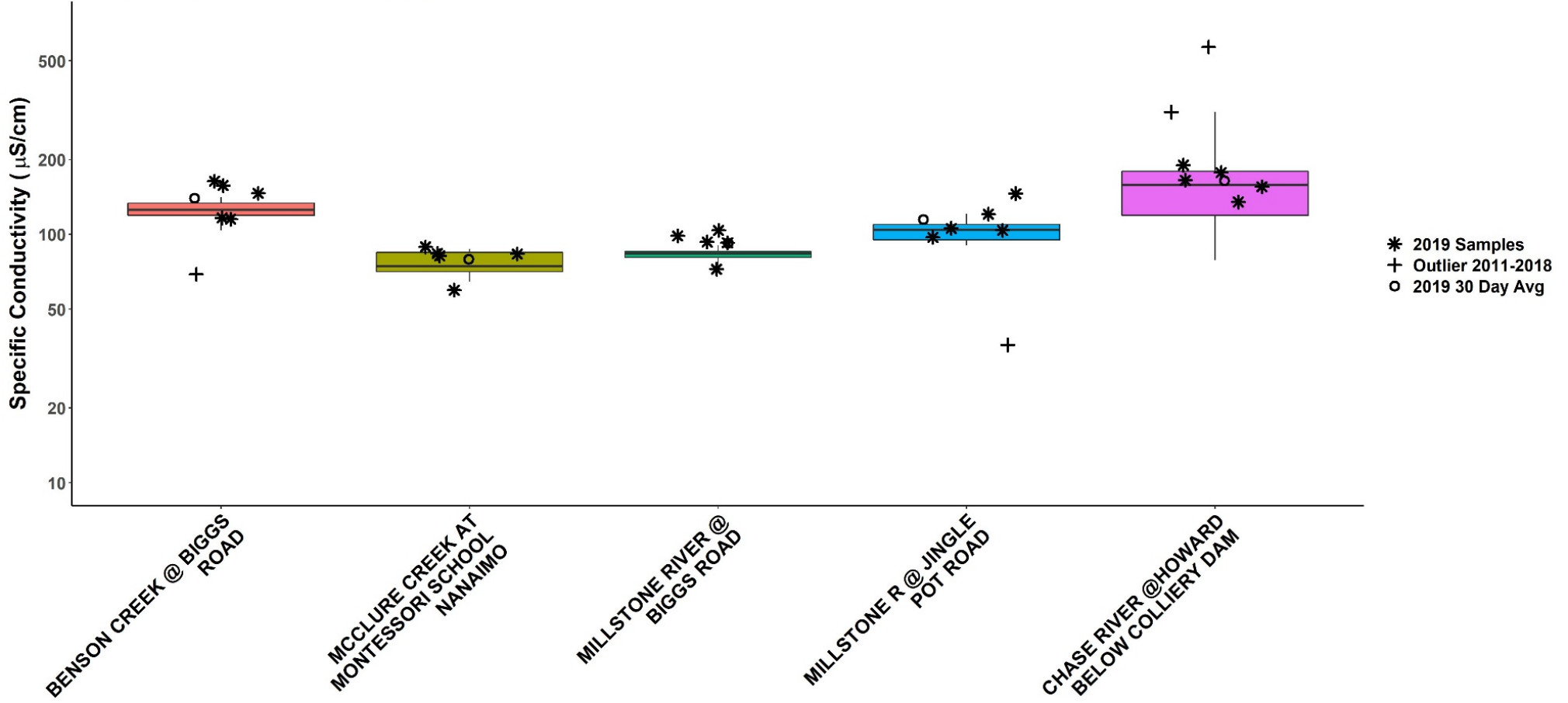
WR5-2 Summer Turbidity



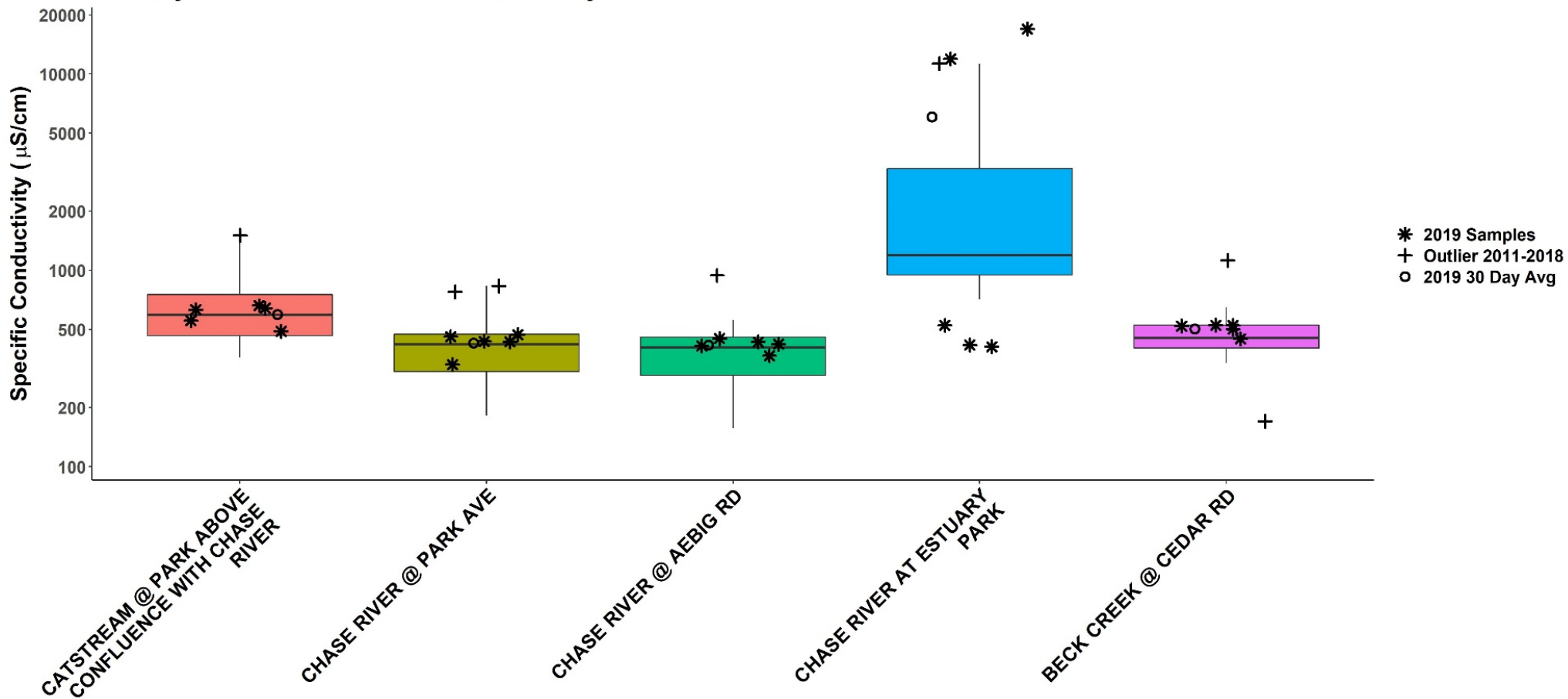
WR5-2 Fall Turbidity



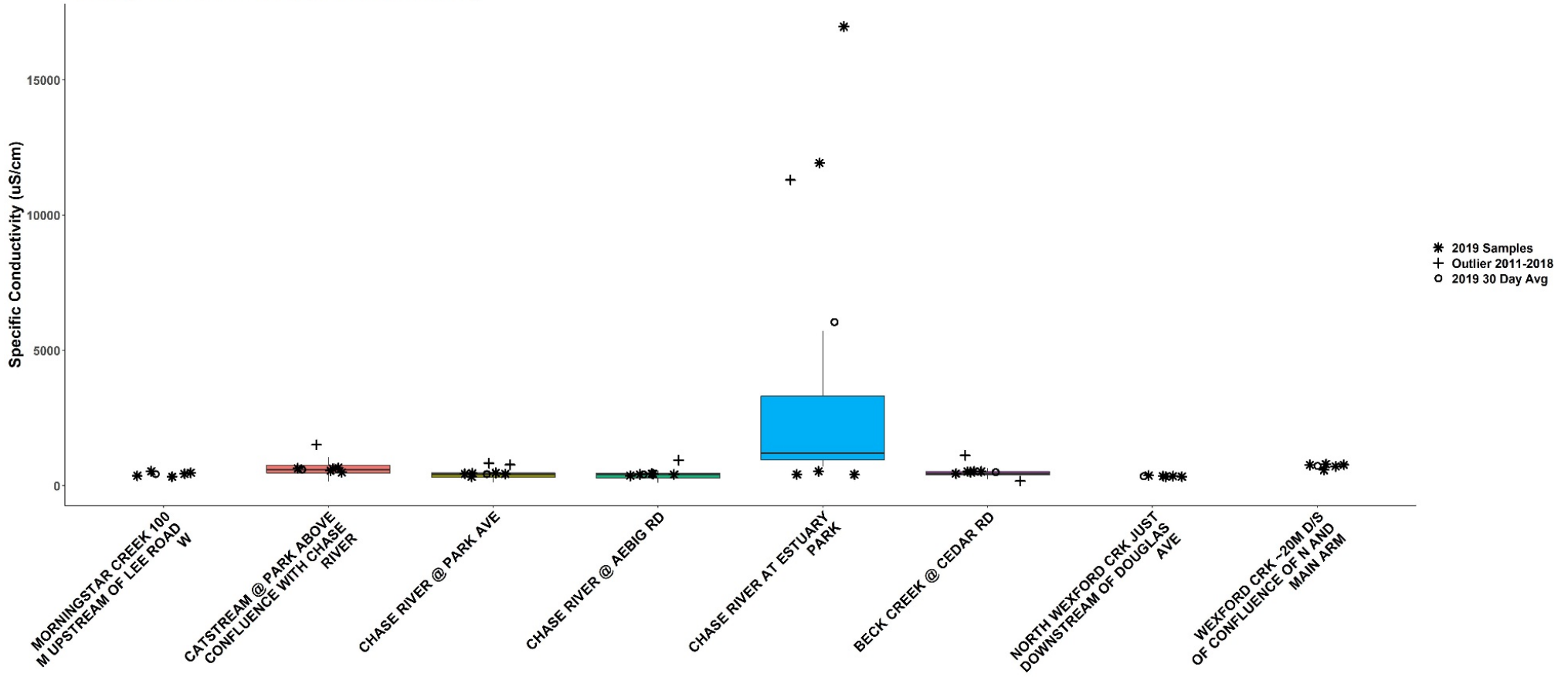
WR5-2 Summer Conductivity



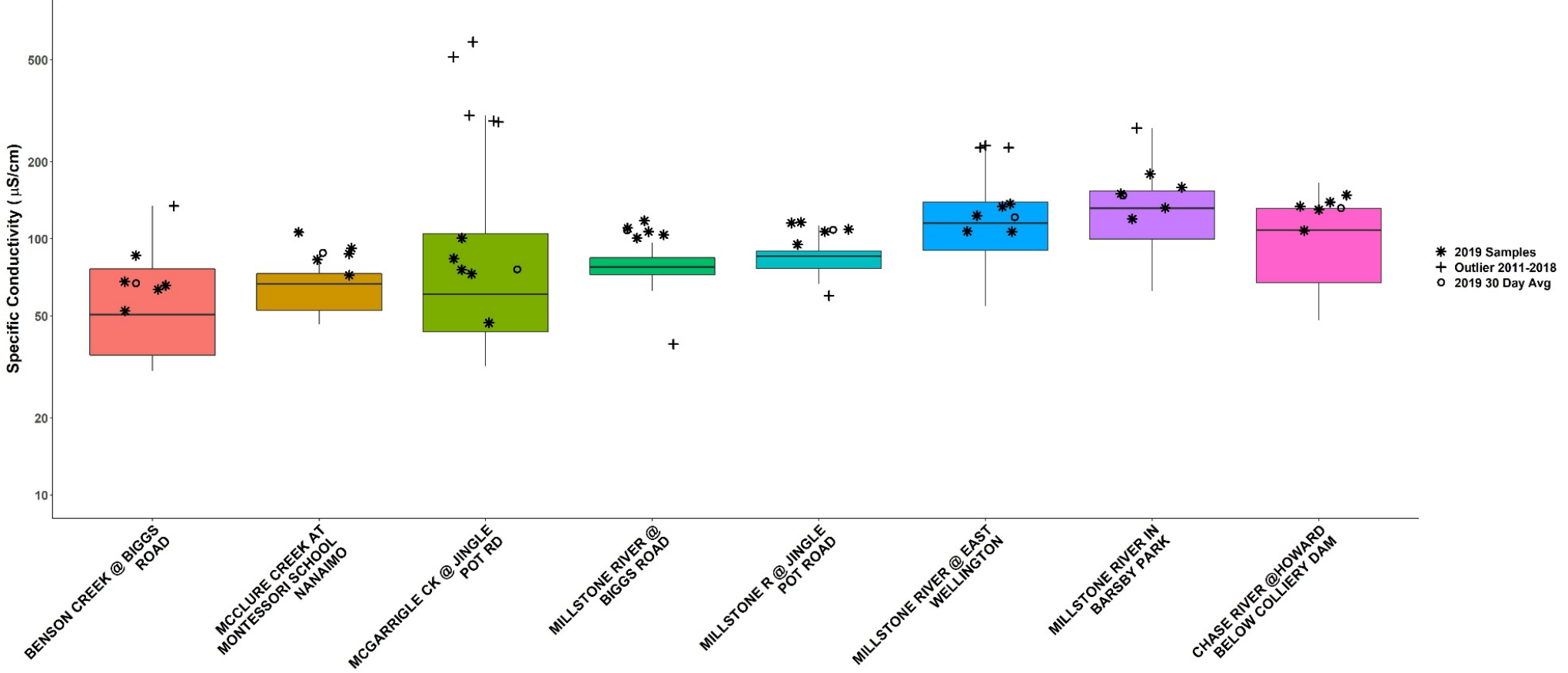
Estuary WR5 WR6 Summer Conductivity



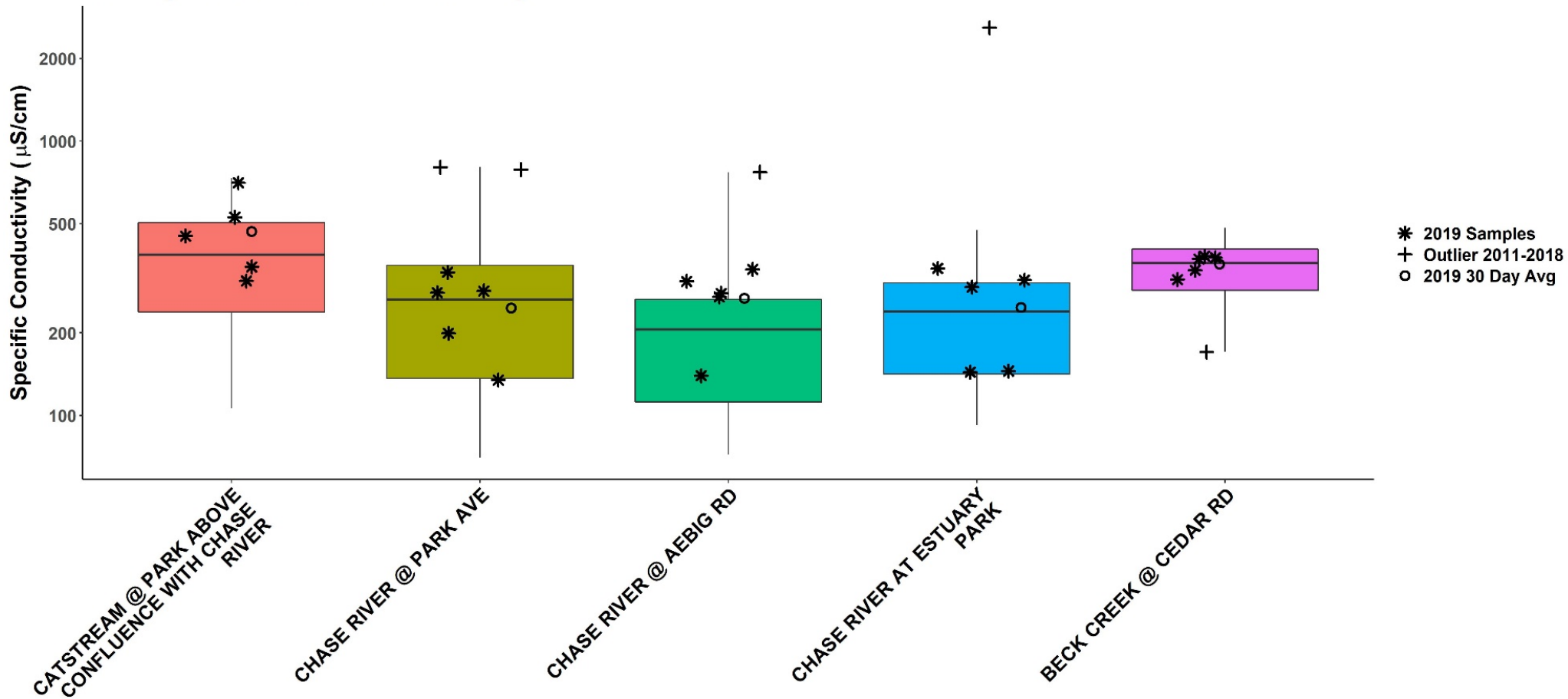
Estuary WR3 WR5 WR6 Summer Conductivity



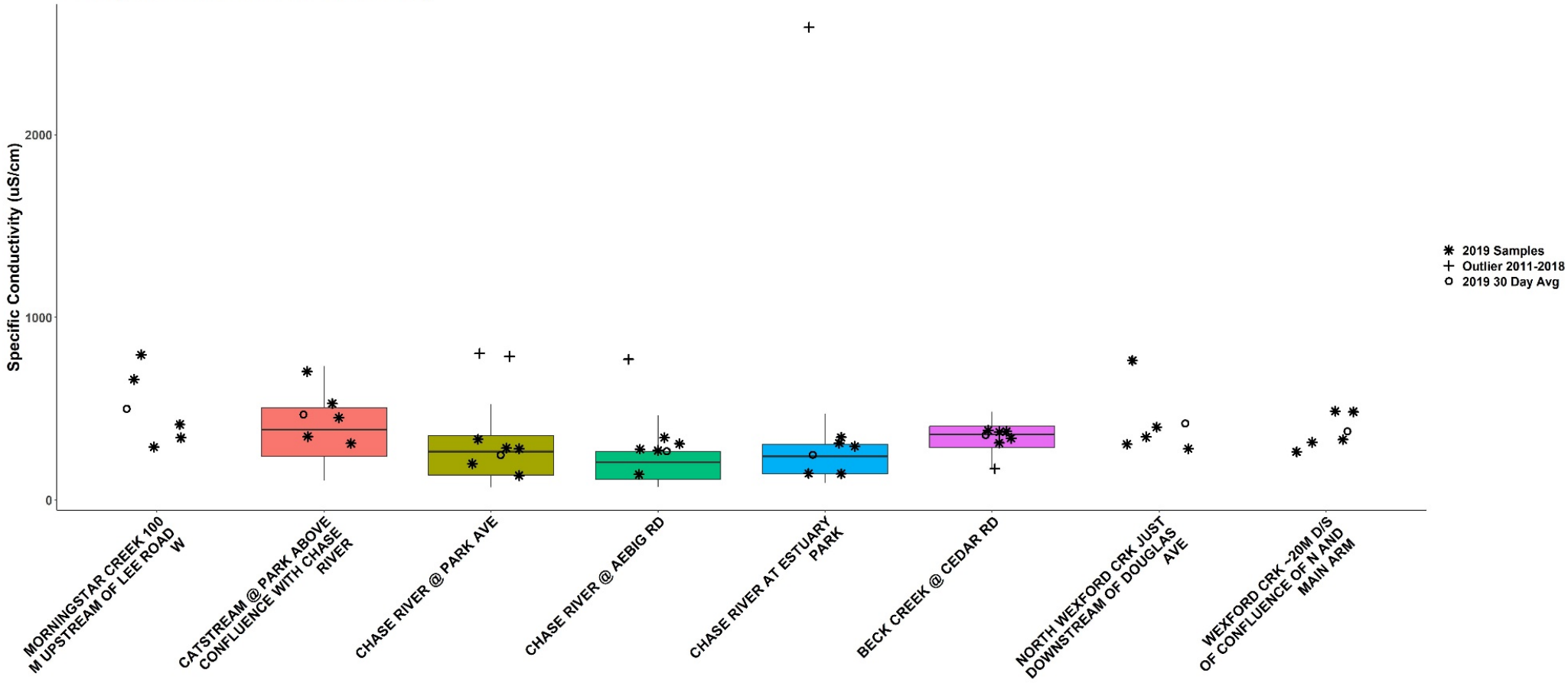
WR5-2 Fall Conductivity



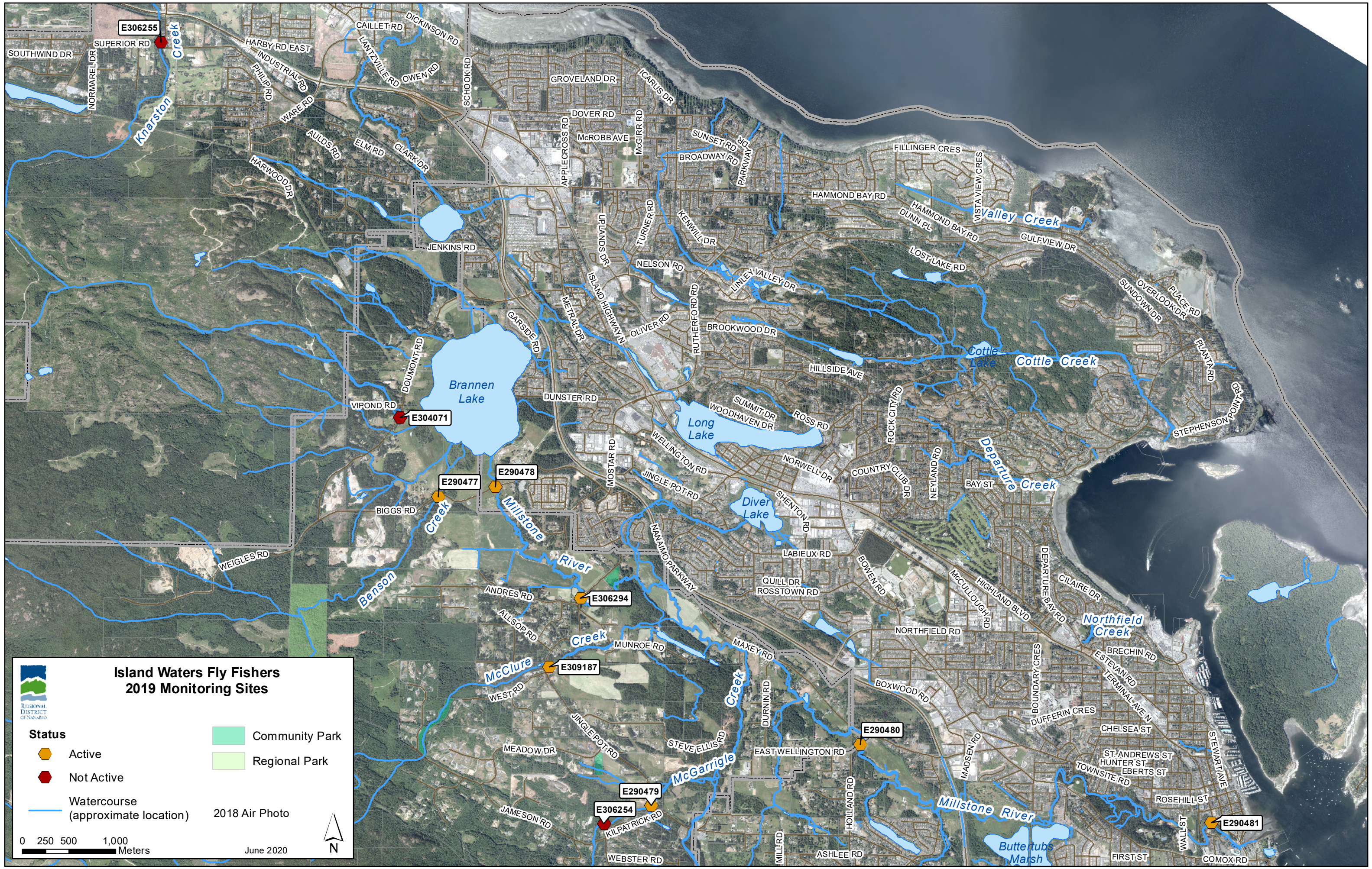
Estuary WR5 WR6 Fall Conductivity



Estuary WR3 WR5 WR6 Fall Conductivity







**Island Waters Fly Fishers
2019 Monitoring Sites**

REGIONAL DISTRICT OF NANAIMO

Status	Active	Community Park
	Not Active	Regional Park
Watercourse (approximate location)		2018 Air Photo

0 250 500 1,000 Meters

June 2020

N

**Island Waters Fly Fishers
2019 Monitoring Sites**

- | | | | |
|--|---------------------------------------|----------------|----------------|
| | Active | | Community Park |
| | Not Active | | Regional Park |
| | Watercourse
(approximate location) | 2018 Air Photo | |

0 250 500 1,000 Meters

June 2020

