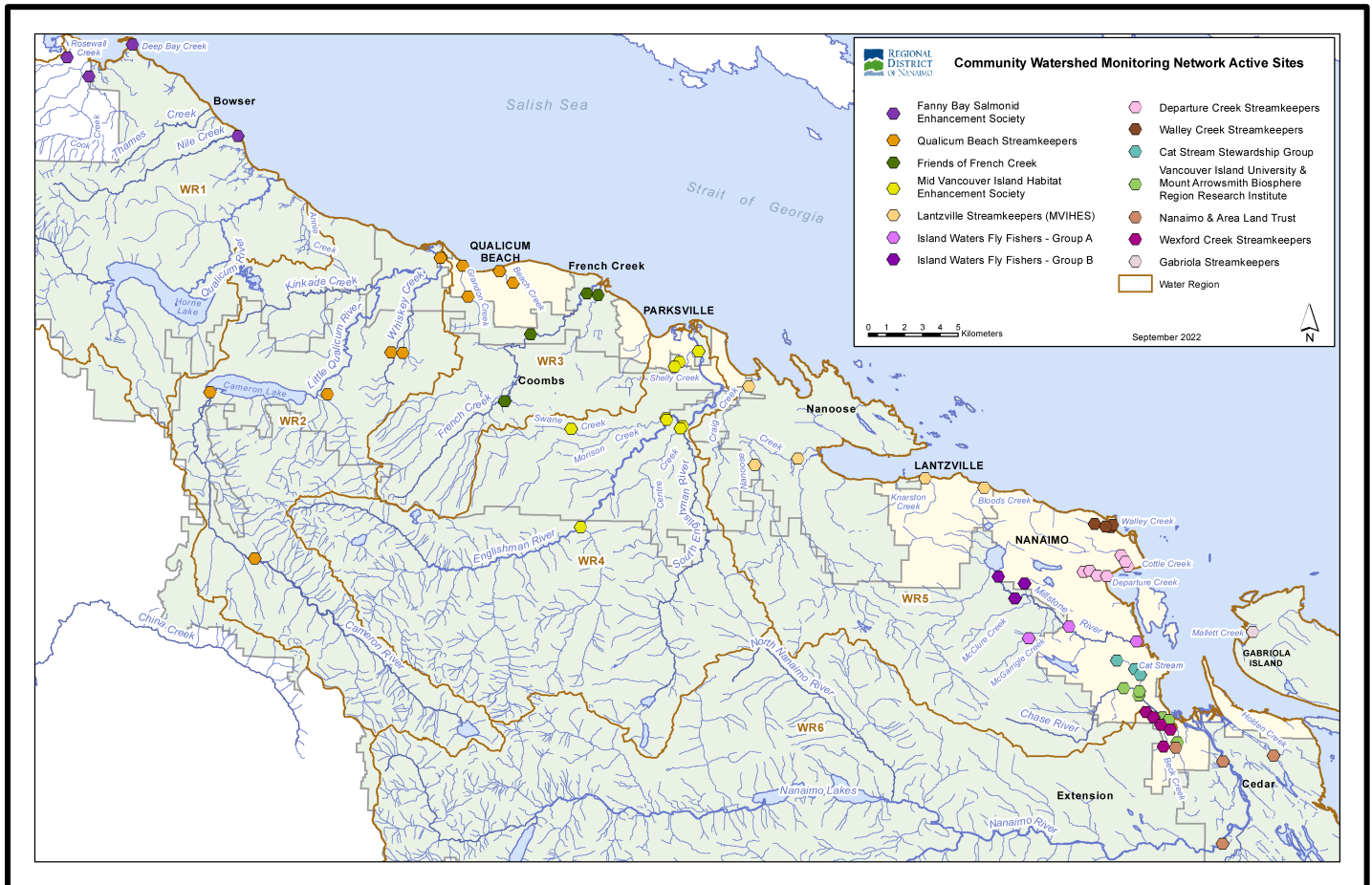


Community Watershed Monitoring Network

2022 Results by Water Region

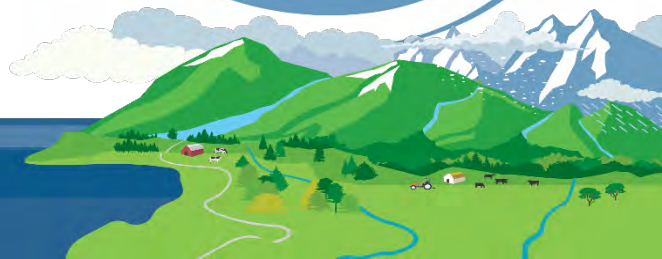


Included in Water Region (WR) 5-2 package:

1. CWMN WR5-2 sample sites
2. How to interpret a box plot
3. Box Plot Comparison – 2022 data to previous years: *displayed by parameter (Turbidity, Dissolved Oxygen, Temperature, Conductivity) & sample period (summer, fall)*
4. Island Waters Fly Fishers (IWFF) map
5. Cat Stream Stewards (CSS) map
6. Vancouver Island University Mount Arrowsmith Biosphere Region Research Institute (VIU MABRRI) map



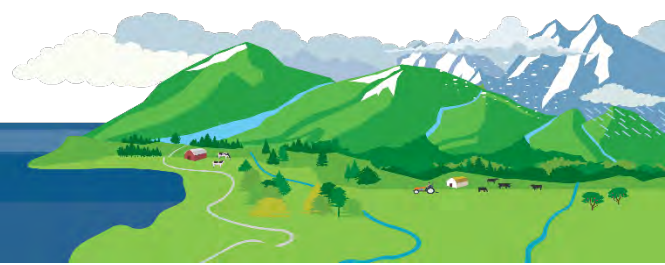
Water Region 5-2
sampled by:
Island Waters Fly Fishers (IWFF)
&
Cat Stream Stewards (CSS)
&
**VIU's Mount Arrowsmith
Biosphere Region Research
Institute (VIU MABRRI)**



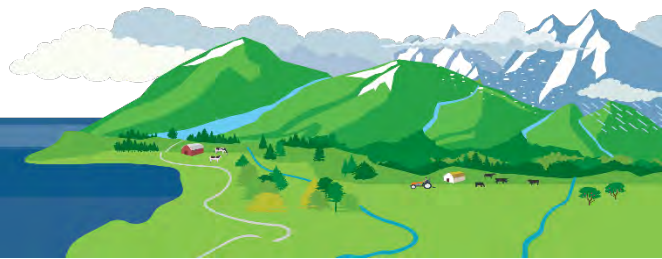
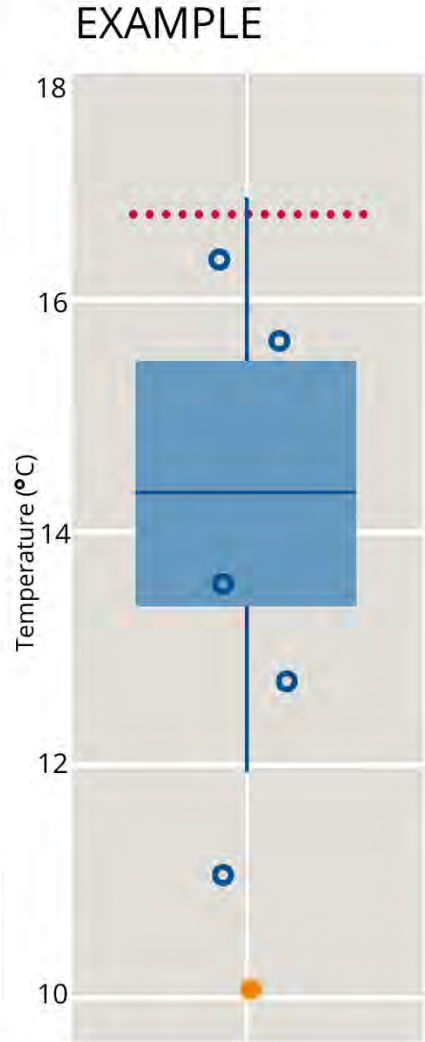
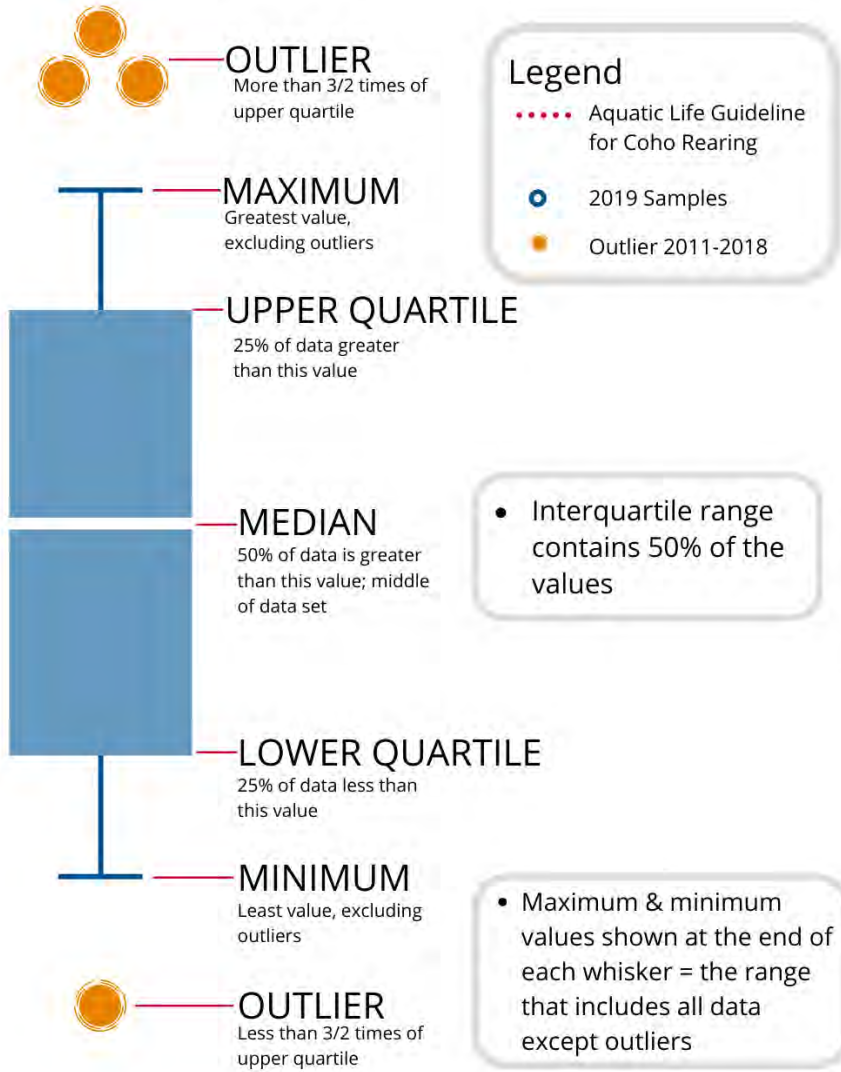
WR5-2 CWMN Sample Sites:

The table below shows the sites monitored by each of the streamkeeper organizations, as well as the number of years and which years a site was sampled. The number of years is important to keep in mind when interpreting the box plots as the plot for each site may contain a slightly different temporal range.

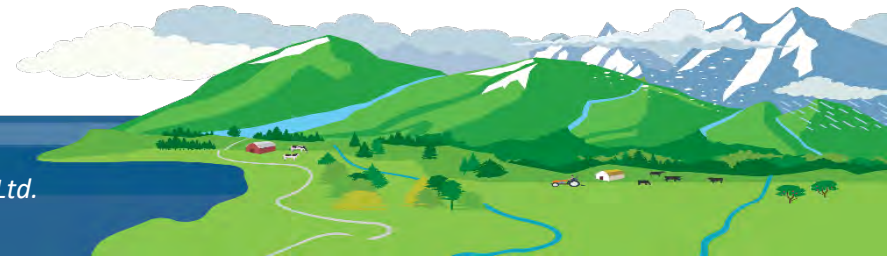
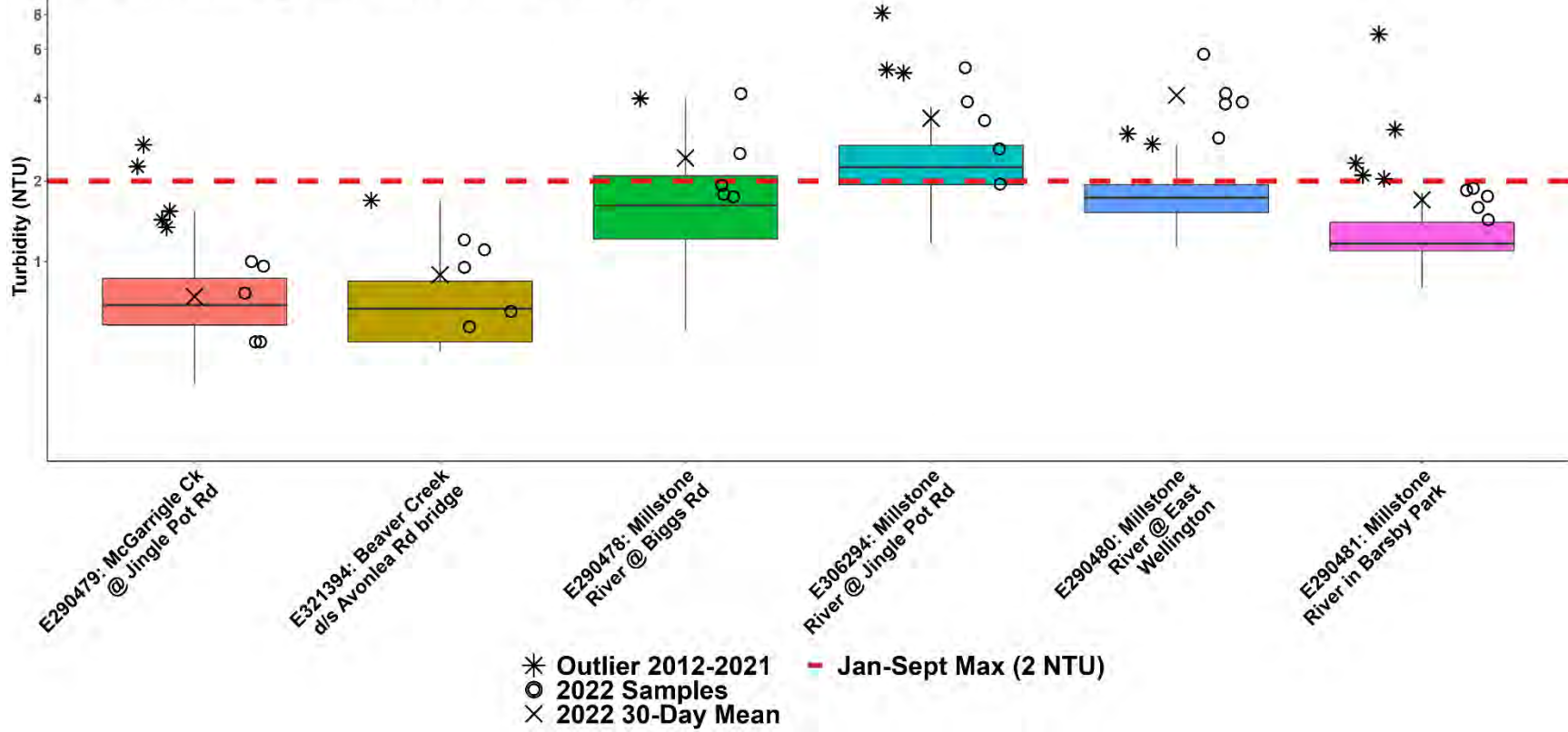
Group	EMS ID	Geographic Description	Years Sampled	Years Monitored
IWFF	E290478	Millstone River @ Biggs Road	11	2012 – present
IWFF	E321394	Beaver Creek d/s Avonlea Rd bridge	3	2020 – present
IWFF	E306294	Millstone River @ Jingle Pot Road	7	2016 – present
IWFF	E290479	McGarrigle Ck @ Jingle Pot Rd	11	2012 – present
IWFF	E290480	Millstone River @ East Wellington	11	2012 – present
IWFF	E290481	Millstone River in Barsby Park	11	2012 – present
CSS	E325371	Cat Stream d/s Wakesiah Ave	2	2021 – present
CSS	E325372	Cat Stream 10m u/s Pine St	2	2021 – present
CSS	E325373	Cat Stream at end of Albion St	2	2021 – present
VIU MABRRI	E290486	Cat Stream @ Park above confluence with Chase River	11	2012 – present
VIU MABRRI	E290484	Chase River @Howard below colliery dam	11	2012 – present
VIU MABRRI	E290485	Chase River @ Park Ave	11	2012 – present
VIU MABRRI	E290483	Chase River @ Aebig	11	2012 – present



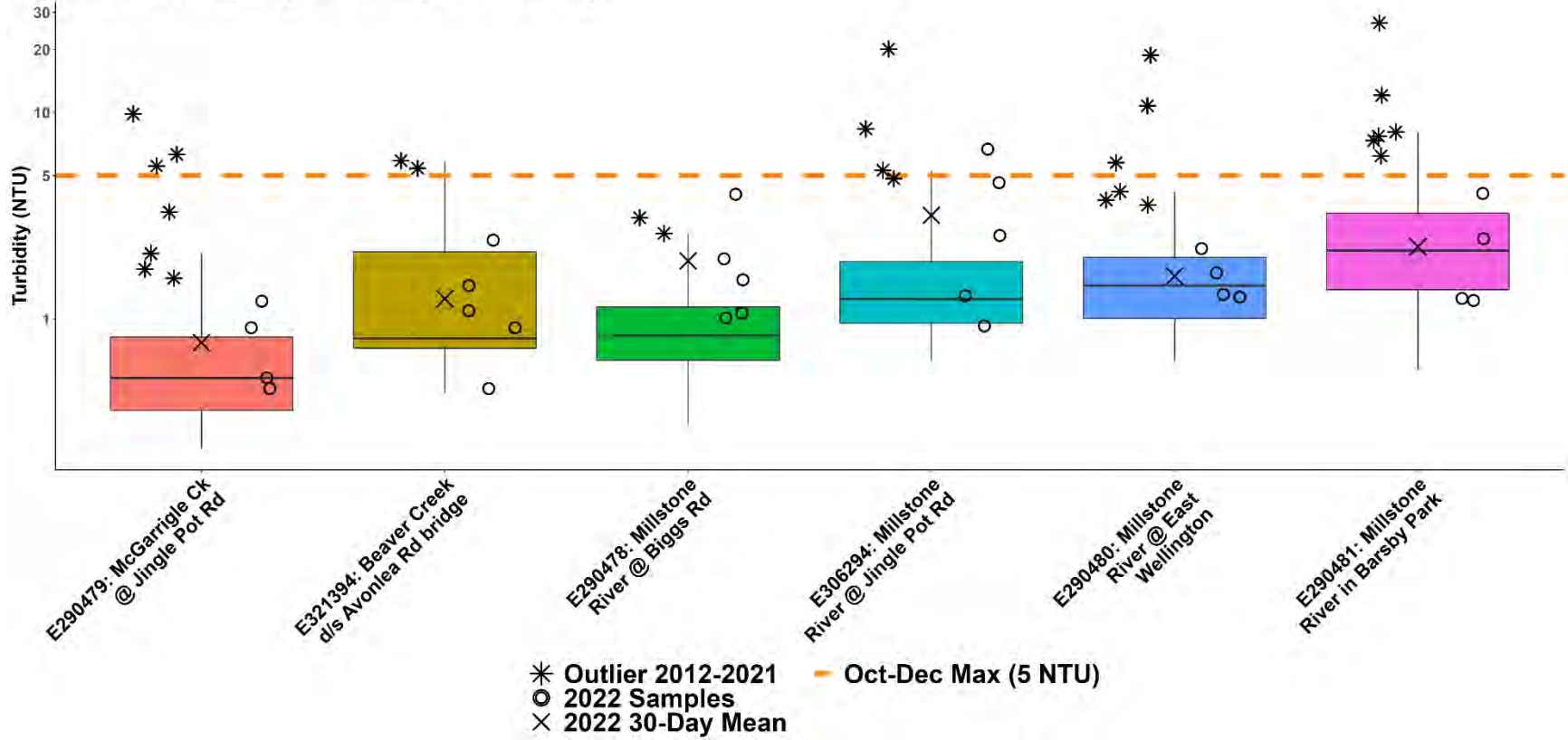
How to Interpret a Box Plot:



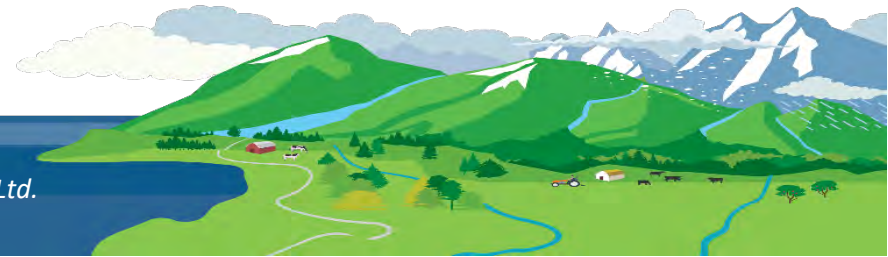
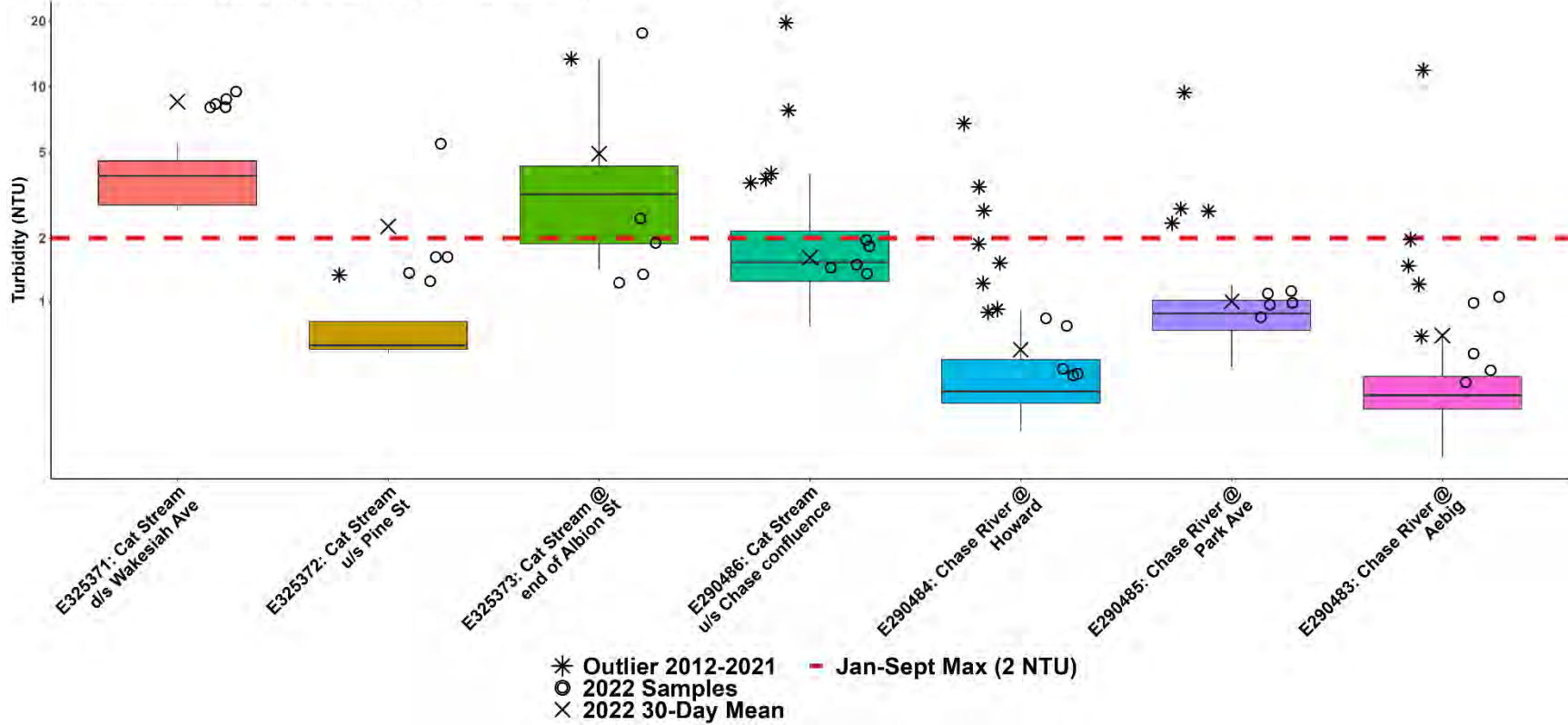
WR5-2a: South Wellington to Nanoose Summer Turbidity



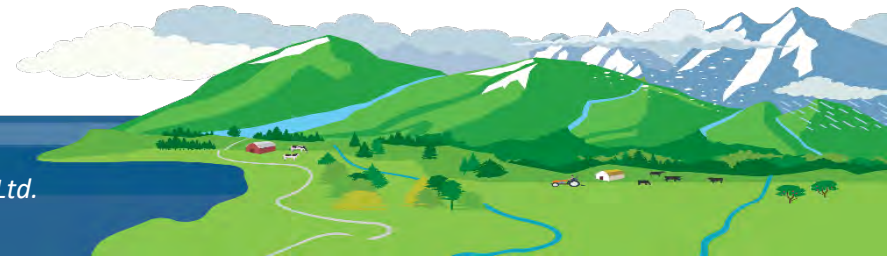
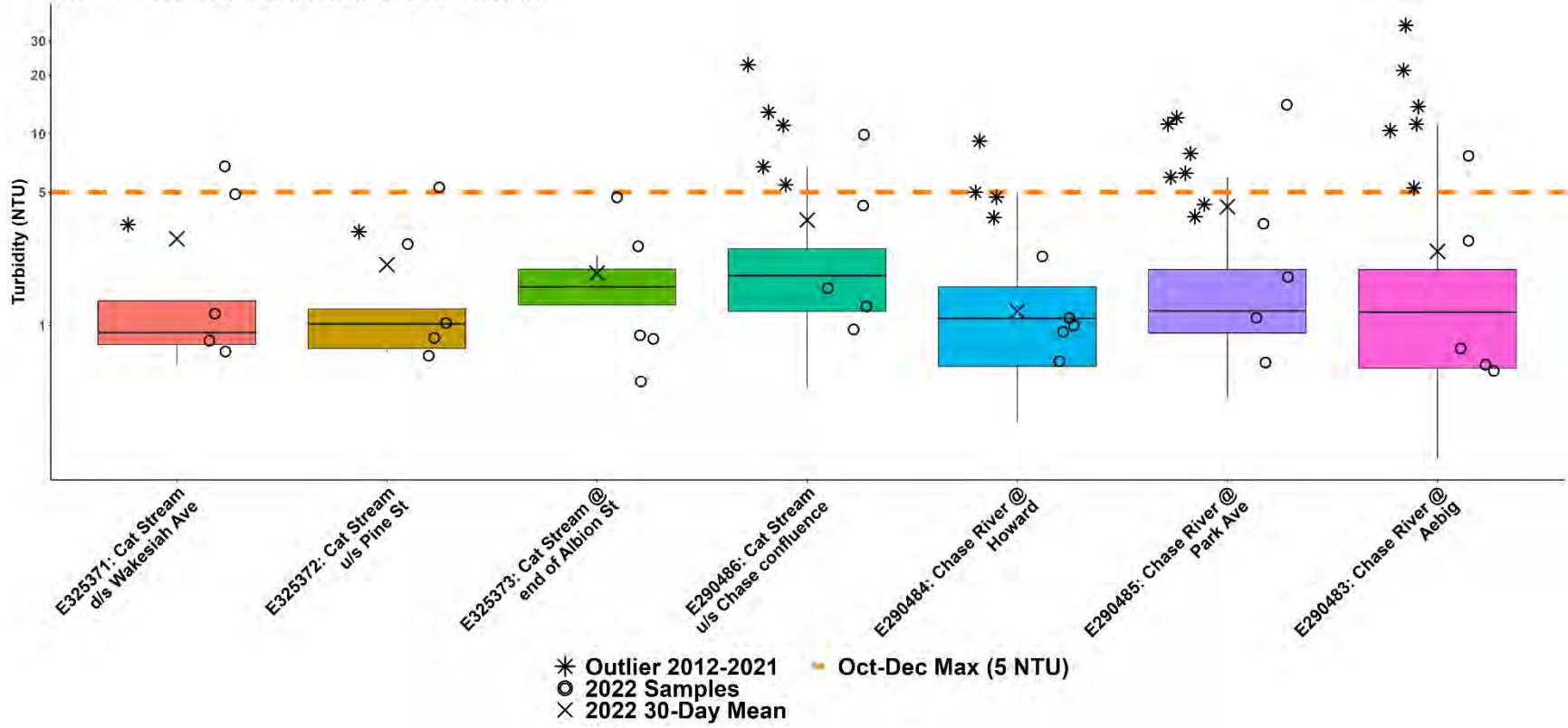
WR5-2a: South Wellington to Nanoose Fall Turbidity



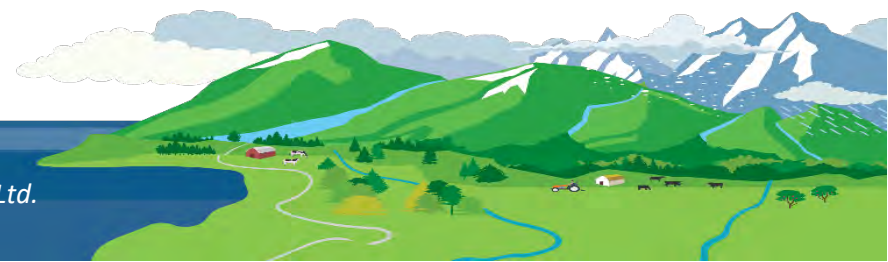
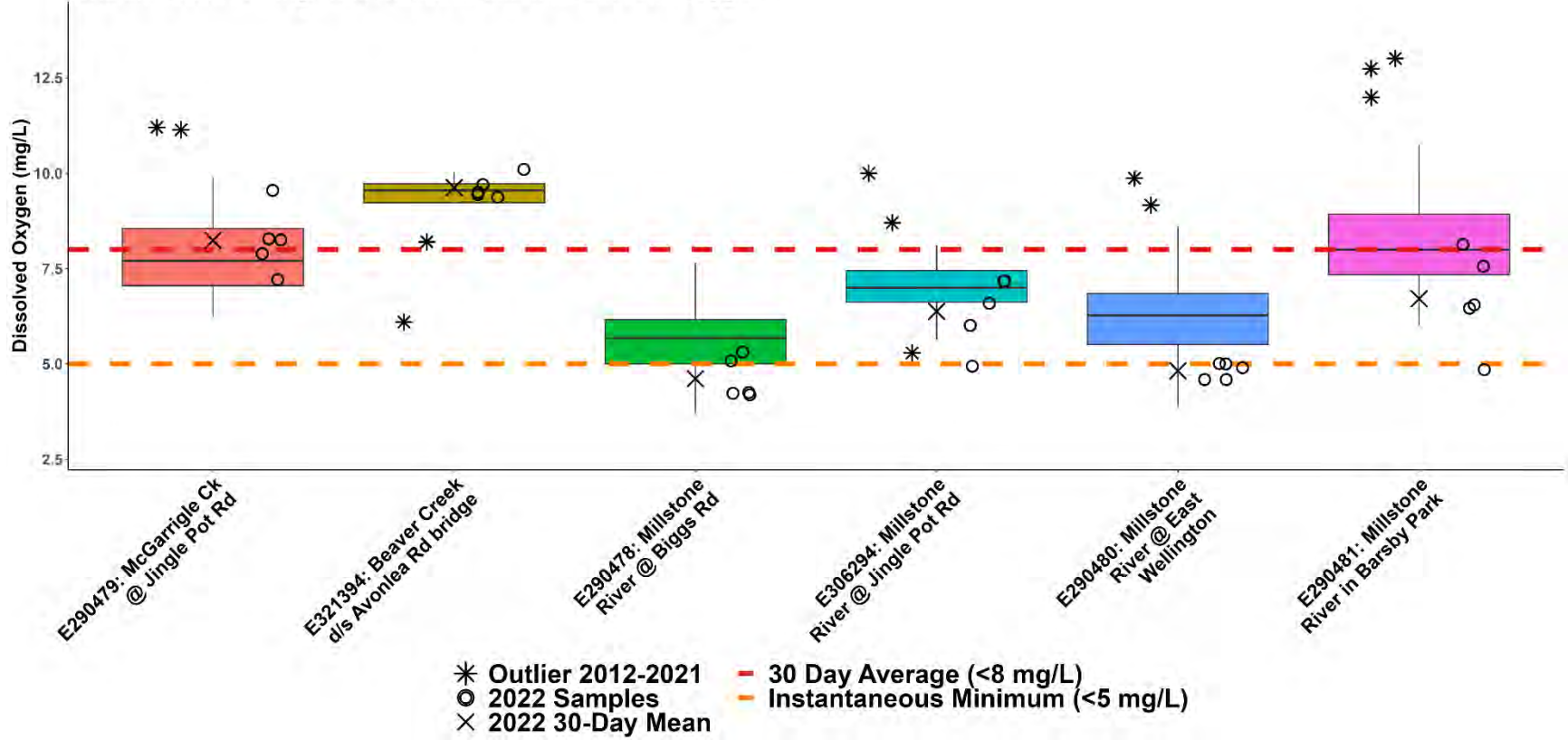
WR5-2b: South Wellington to Nanoose Summer Turbidity



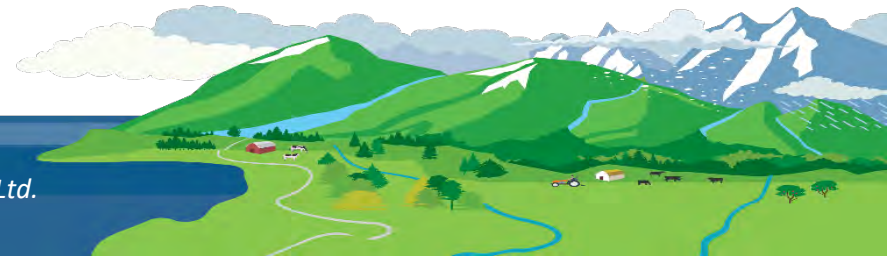
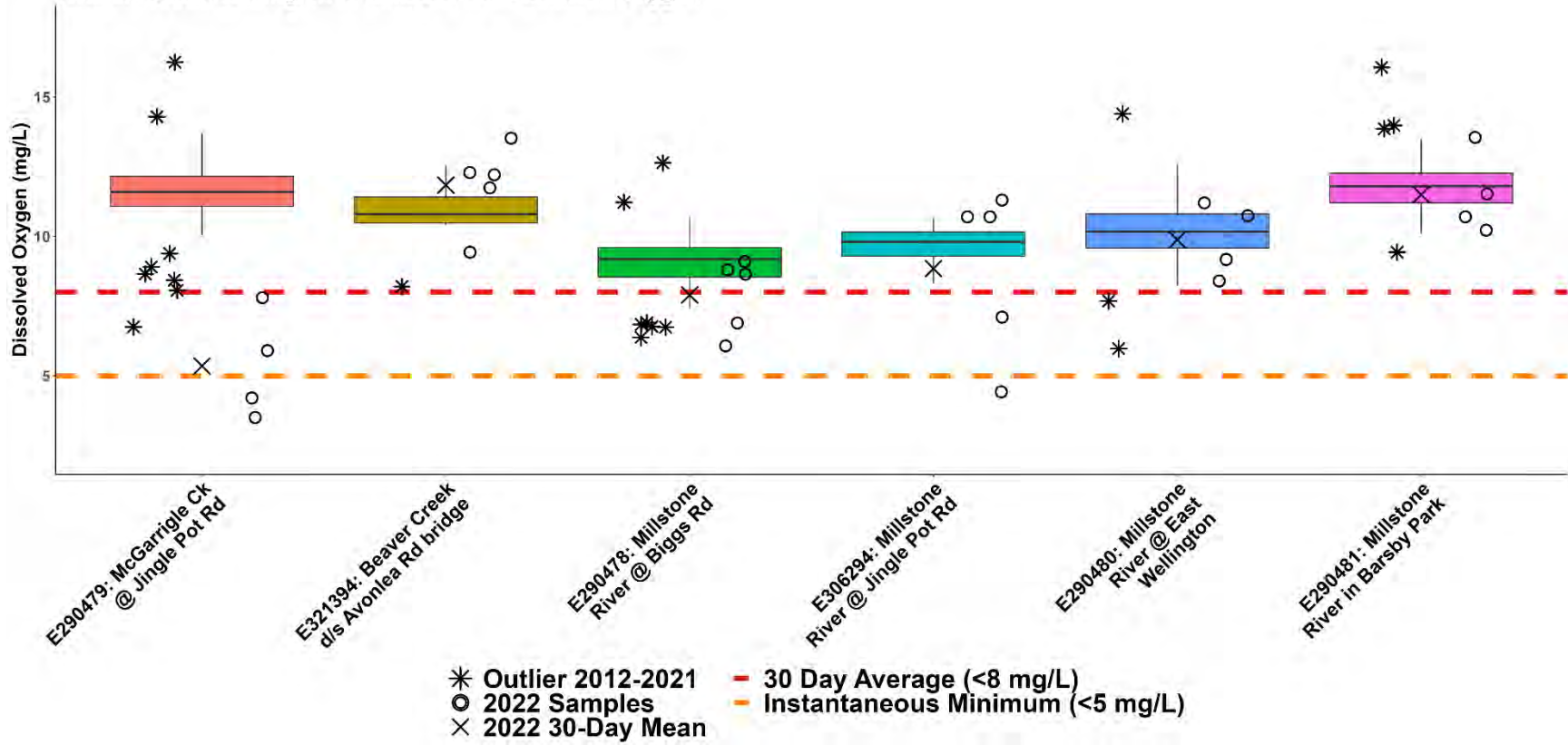
WR5-2b: South Wellington to Nanoose Fall Turbidity



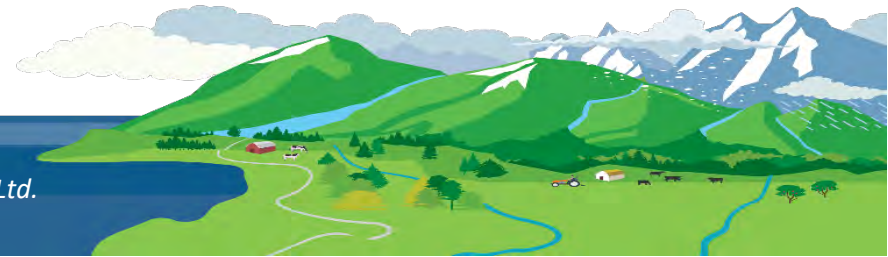
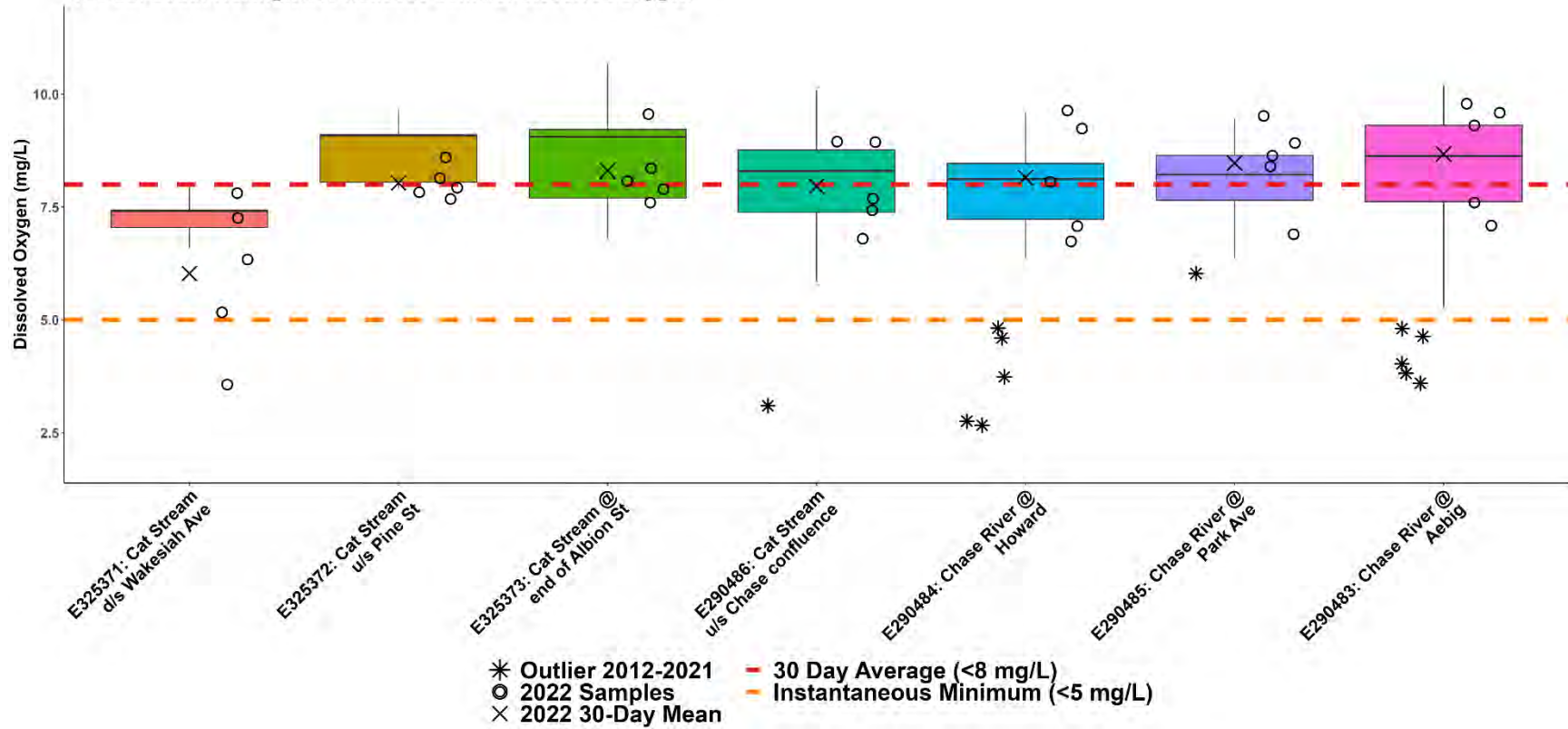
WR5-2a: South Wellington to Nanoose Summer Dissolved Oxygen



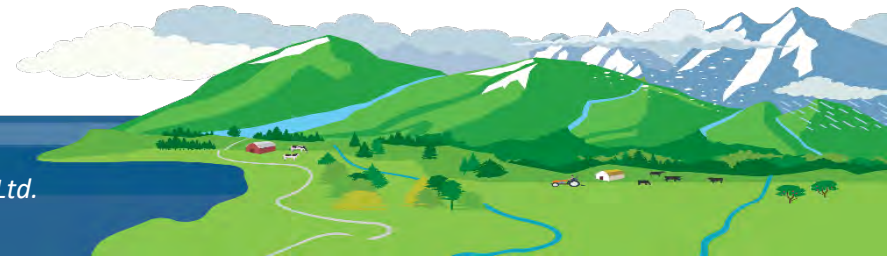
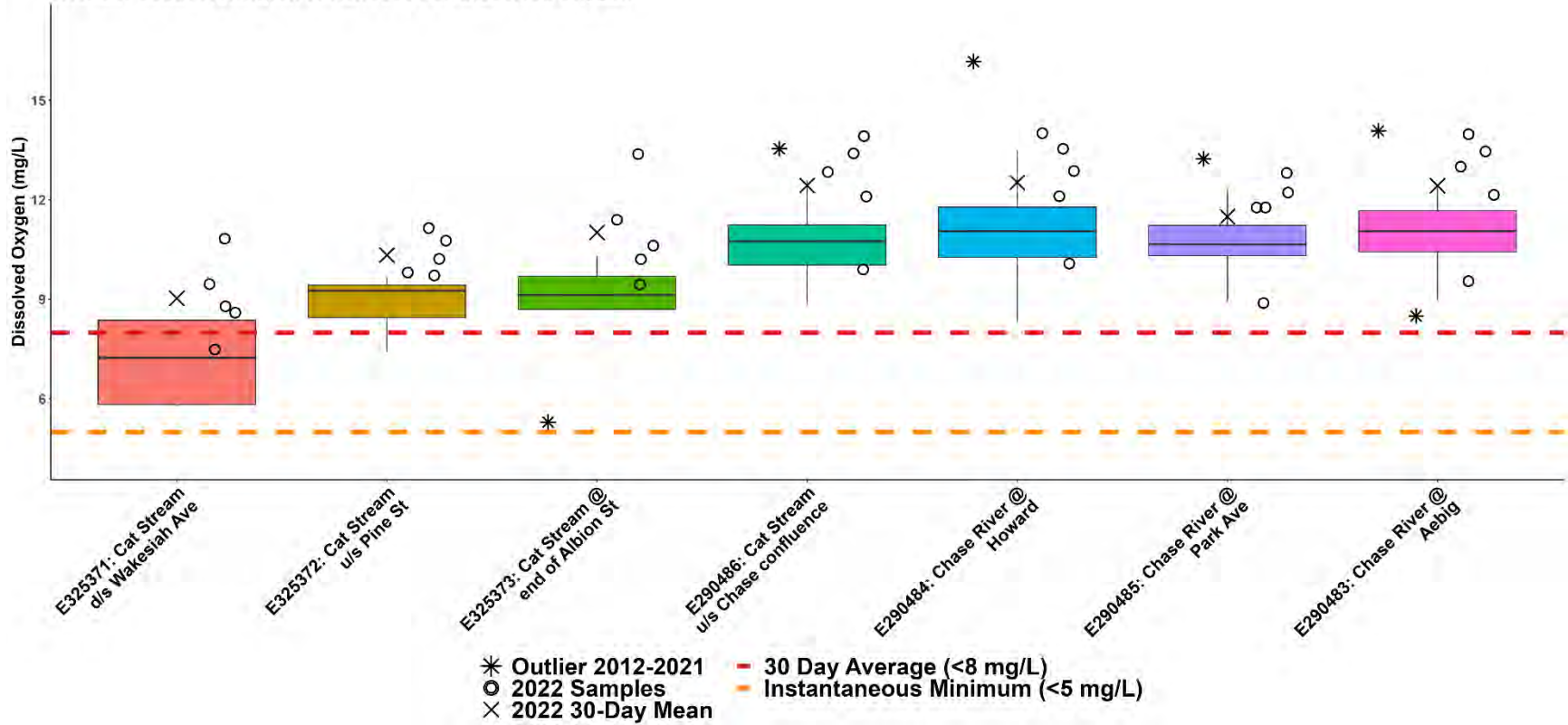
WR5-2a: South Wellington to Nanoose Fall Dissolved Oxygen



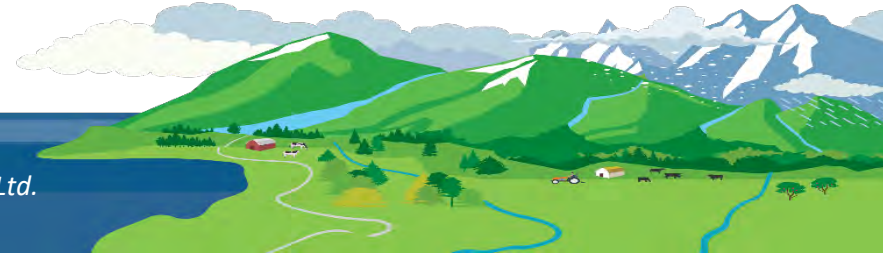
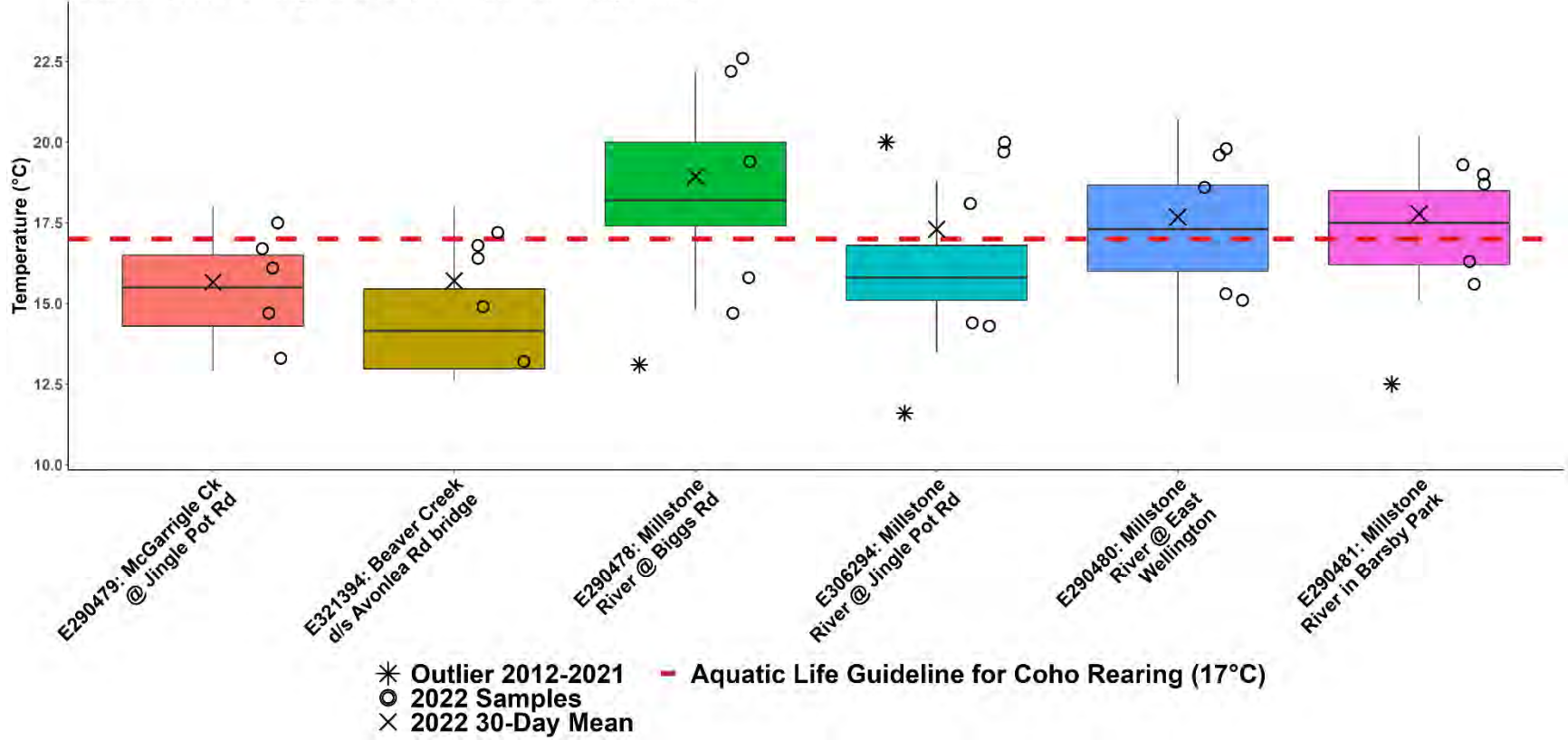
WR5-2b: South Wellington to Nanoose Summer Dissolved Oxygen



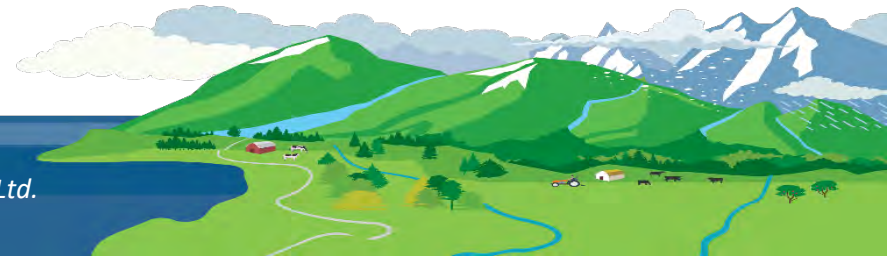
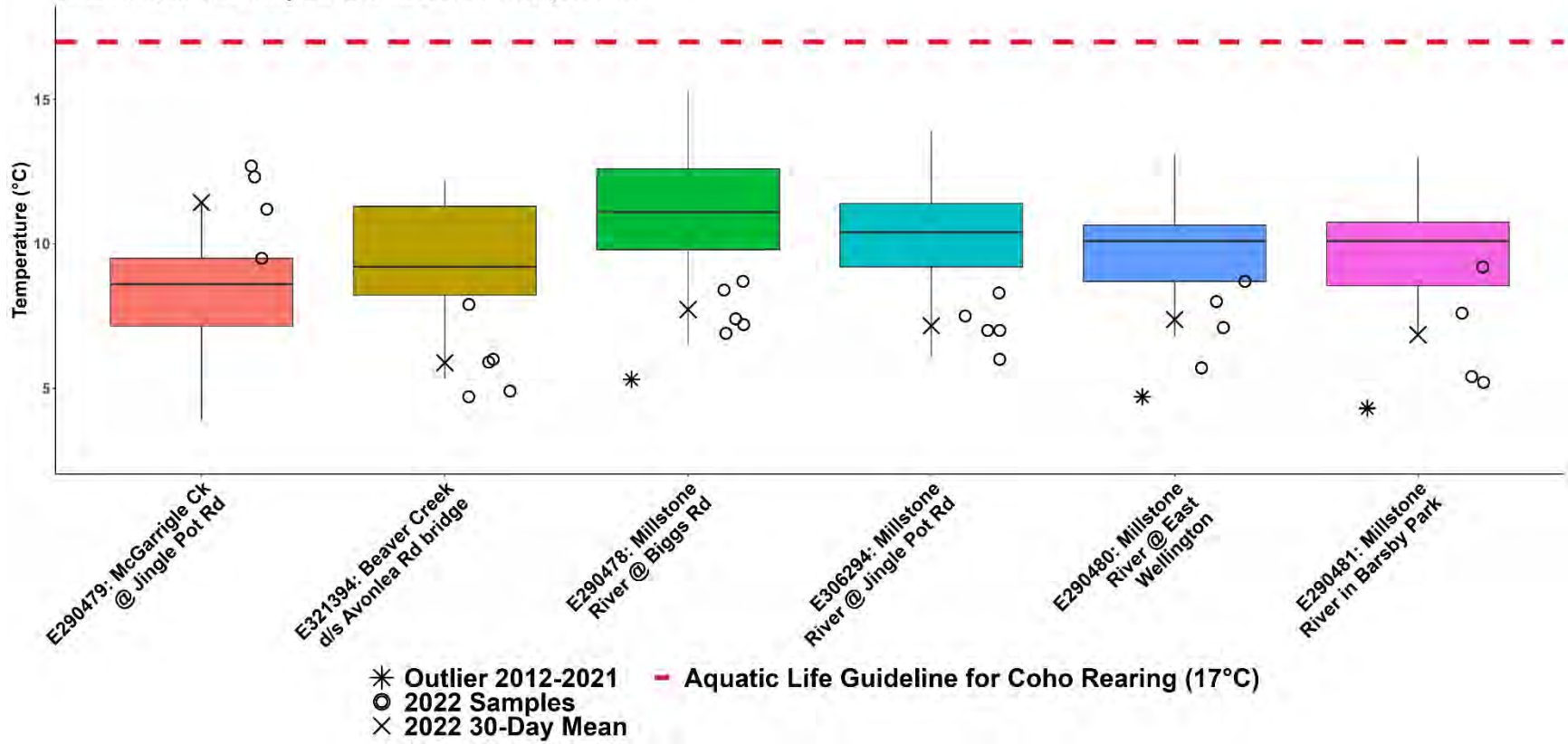
WR5-2b: South Wellington to Nanoose Fall Dissolved Oxygen



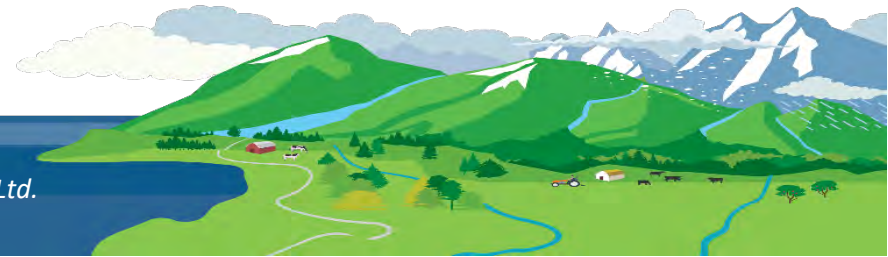
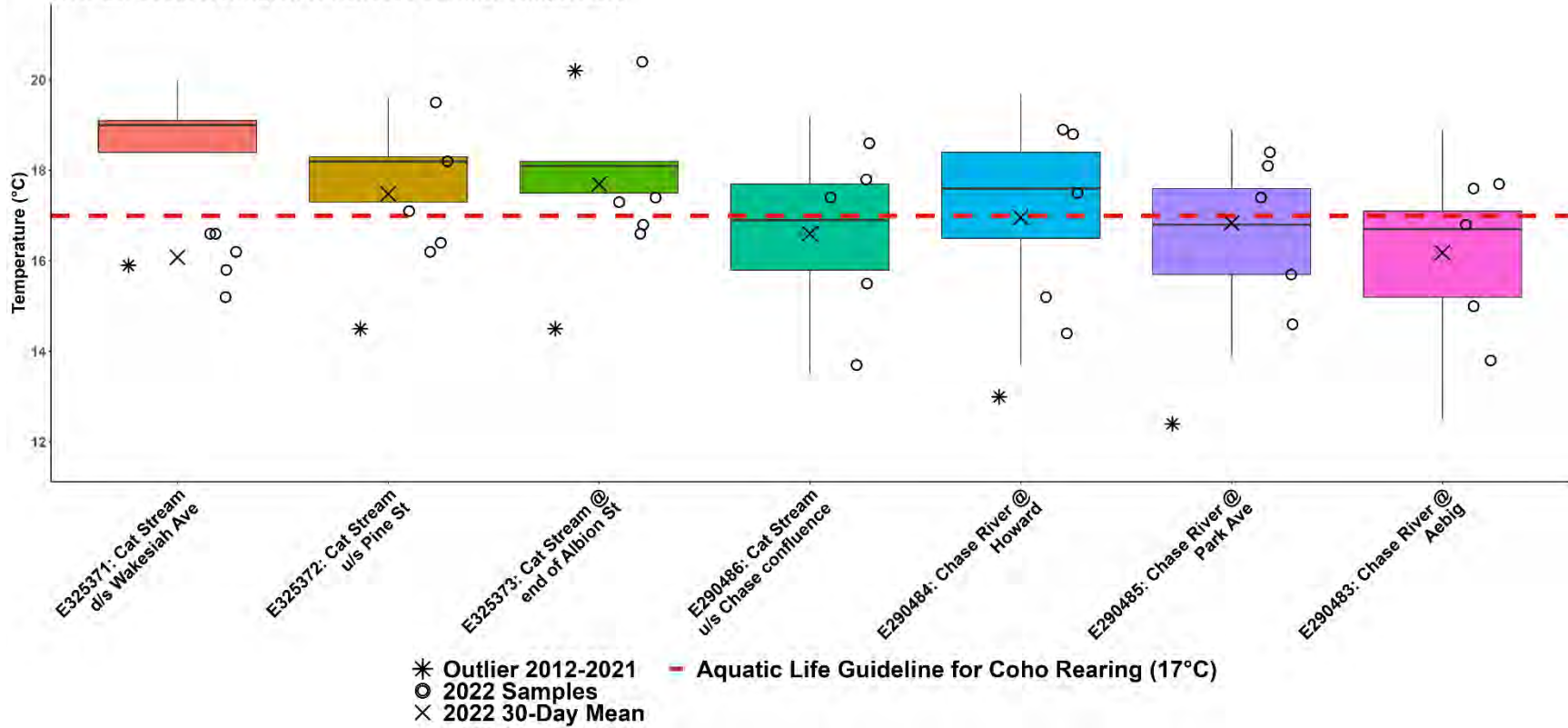
WR5-2a: South Wellington to Nanoose Summer Temperature



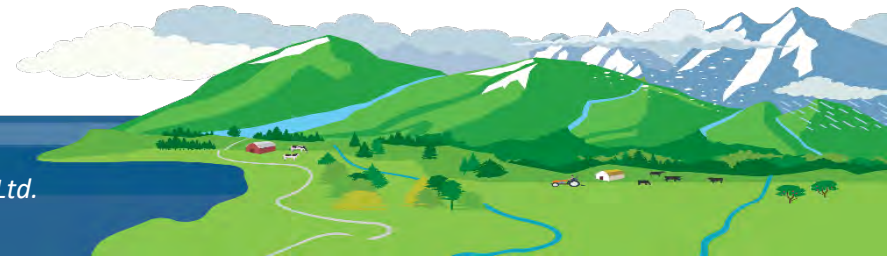
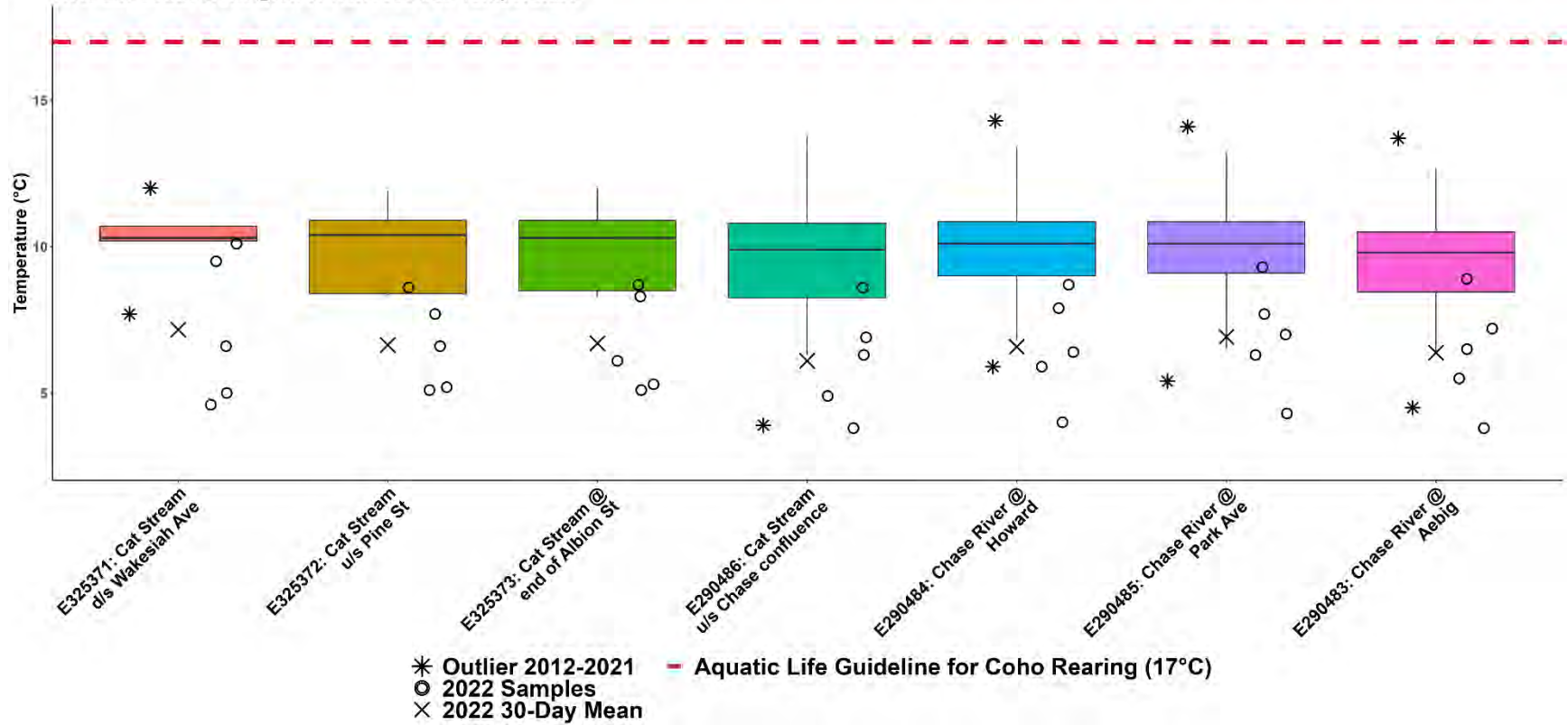
WR5-2a: South Wellington to Nanoose Fall Temperature



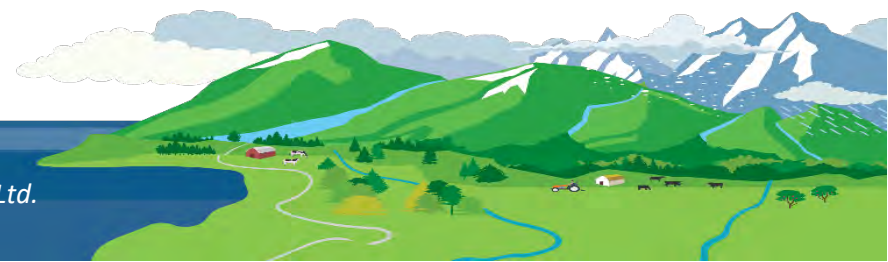
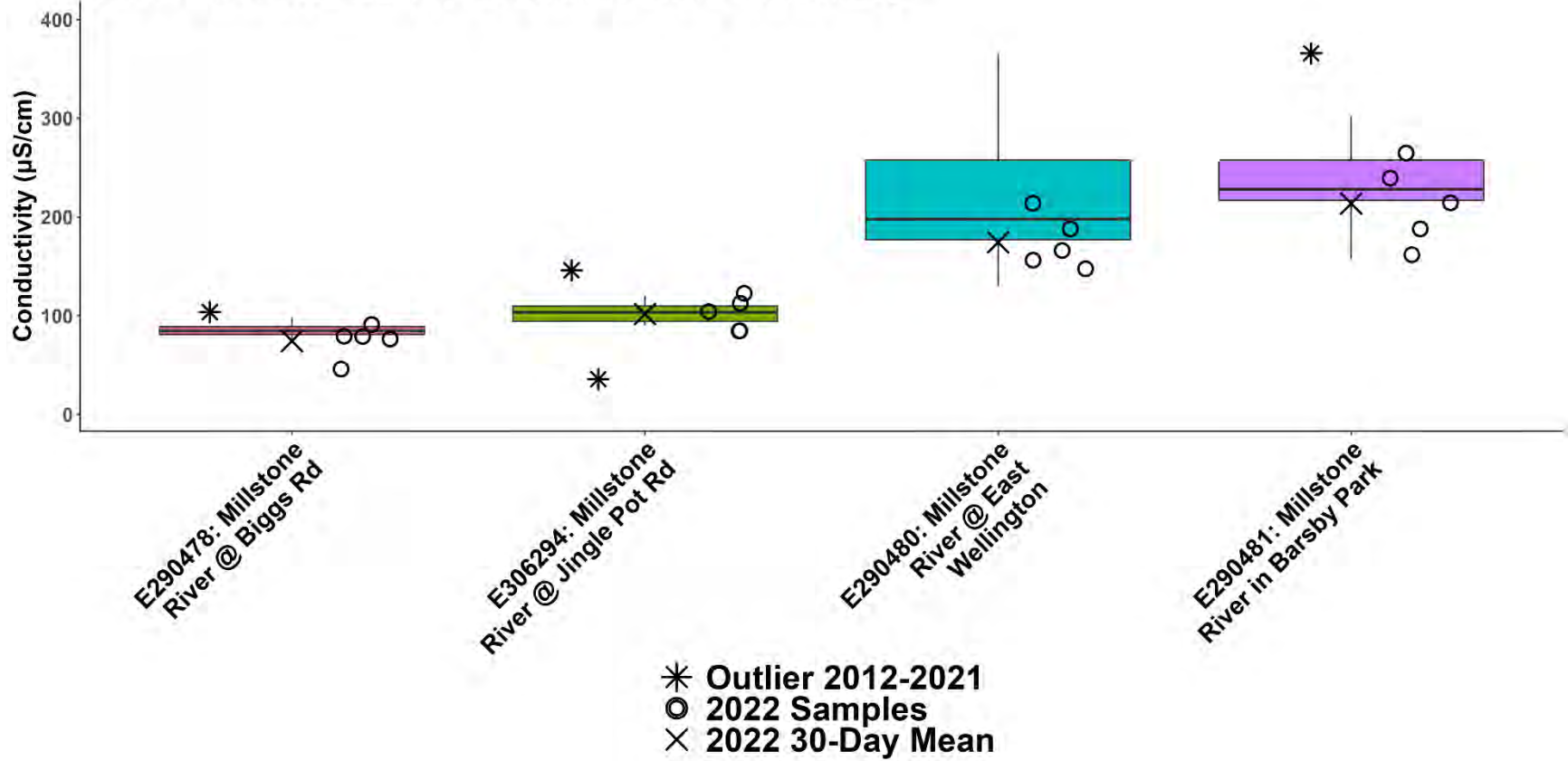
WR5-2b: South Wellington to Nanoose Summer Temperature



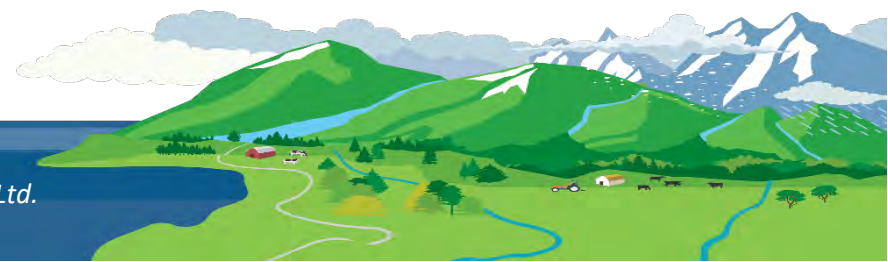
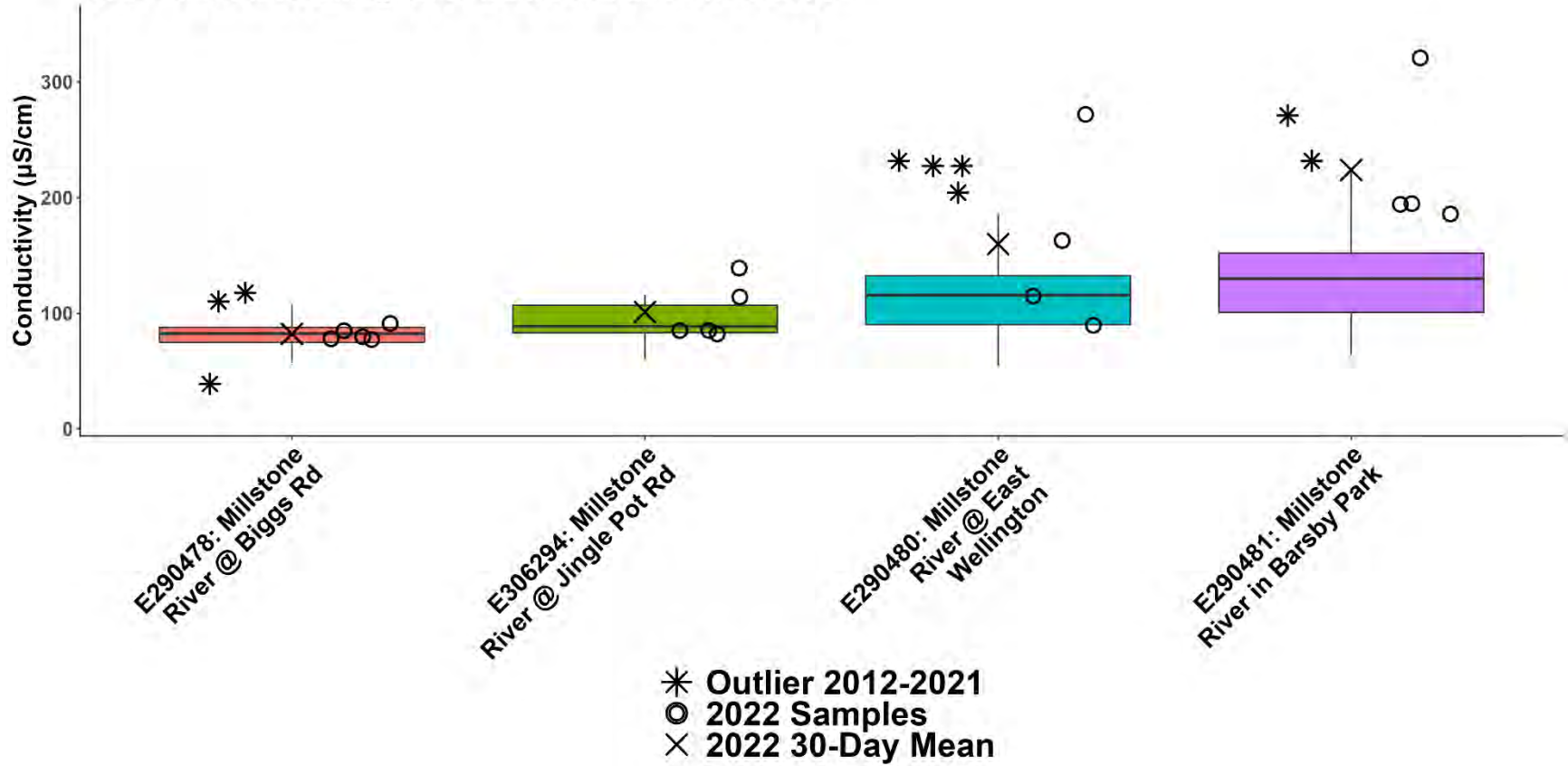
WR5-2b: South Wellington to Nanoose Fall Temperature



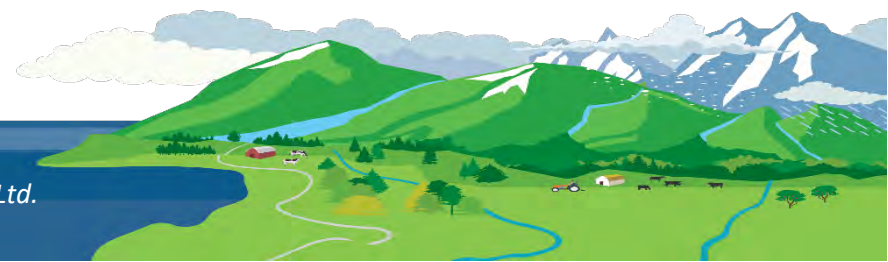
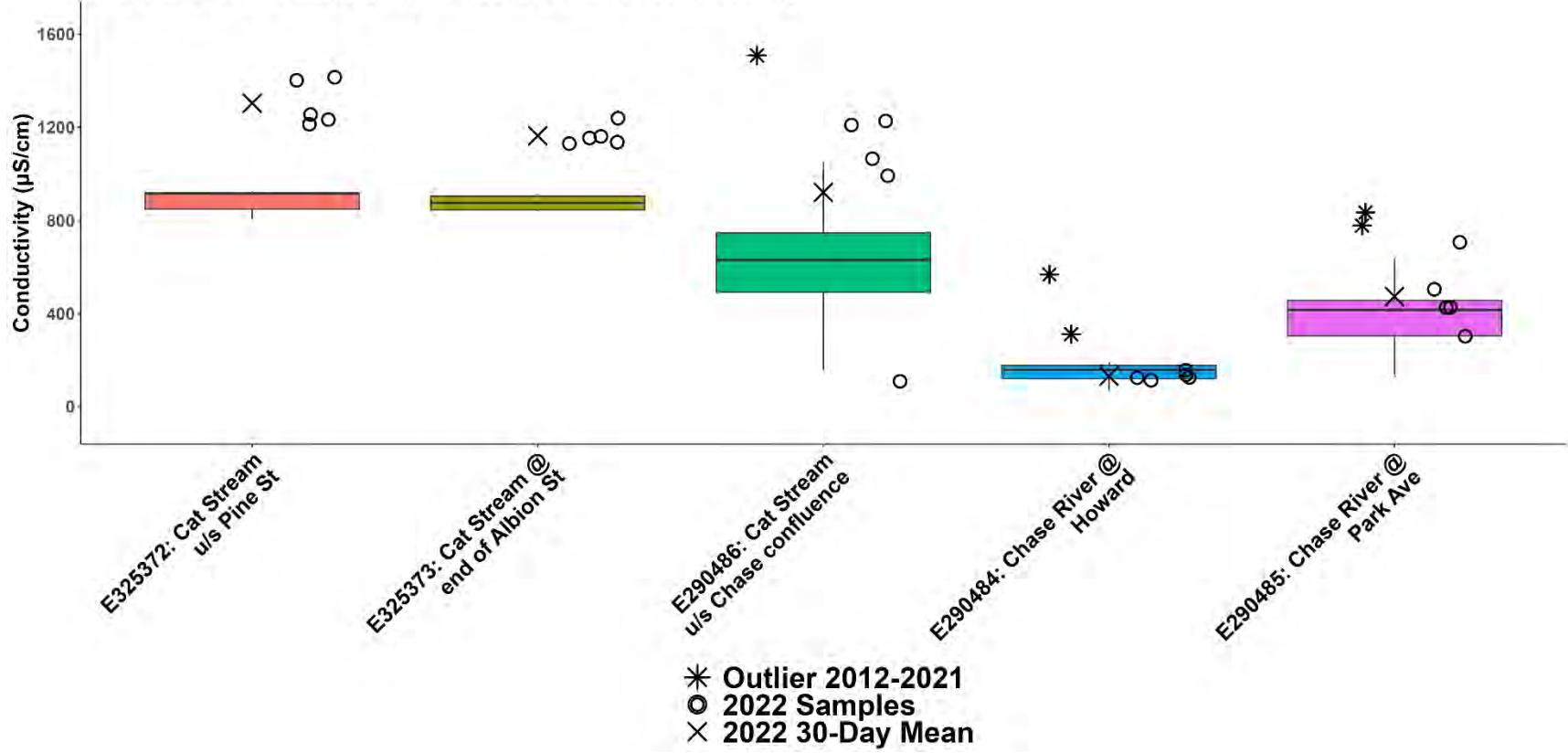
WR5-2a: South Wellington to Nanoose Summer Conductivity



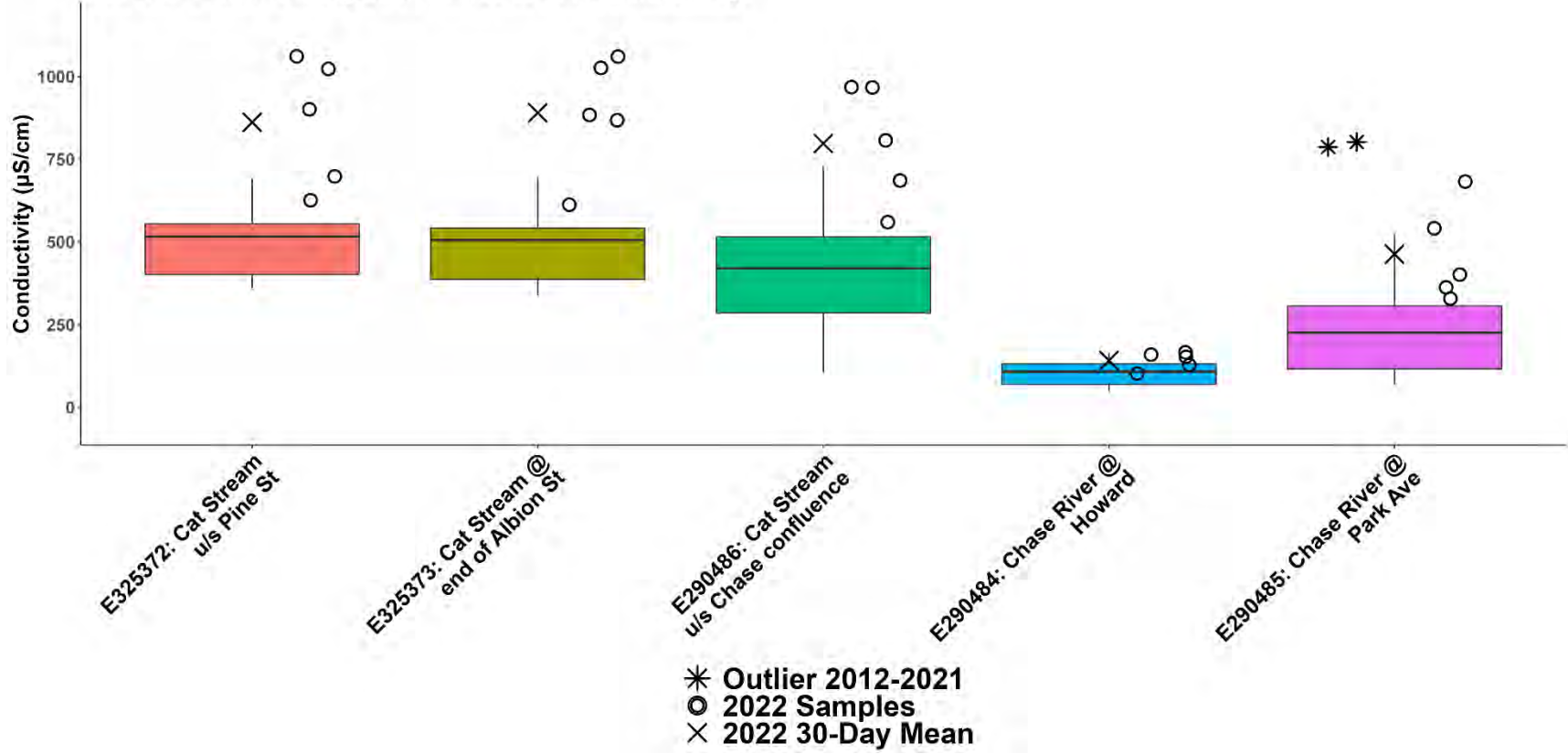
WR5-2a: South Wellington to Nanoose Fall Conductivity

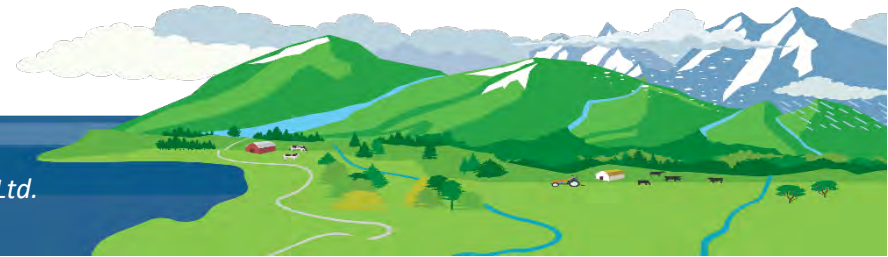
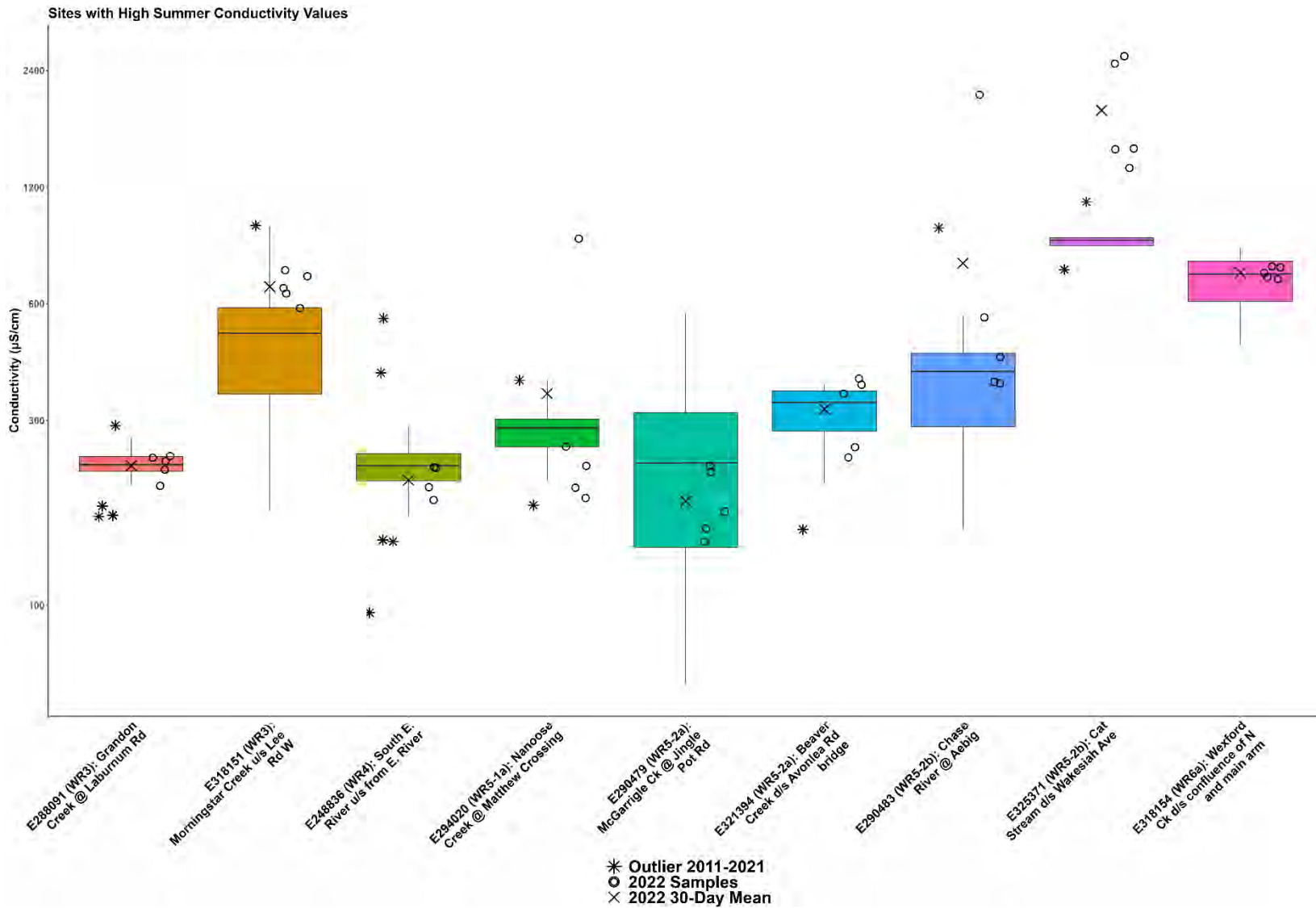


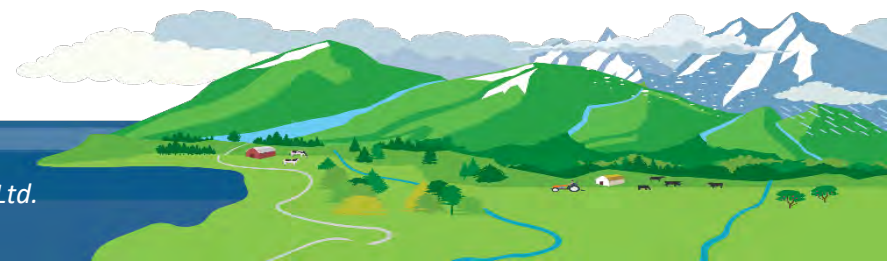
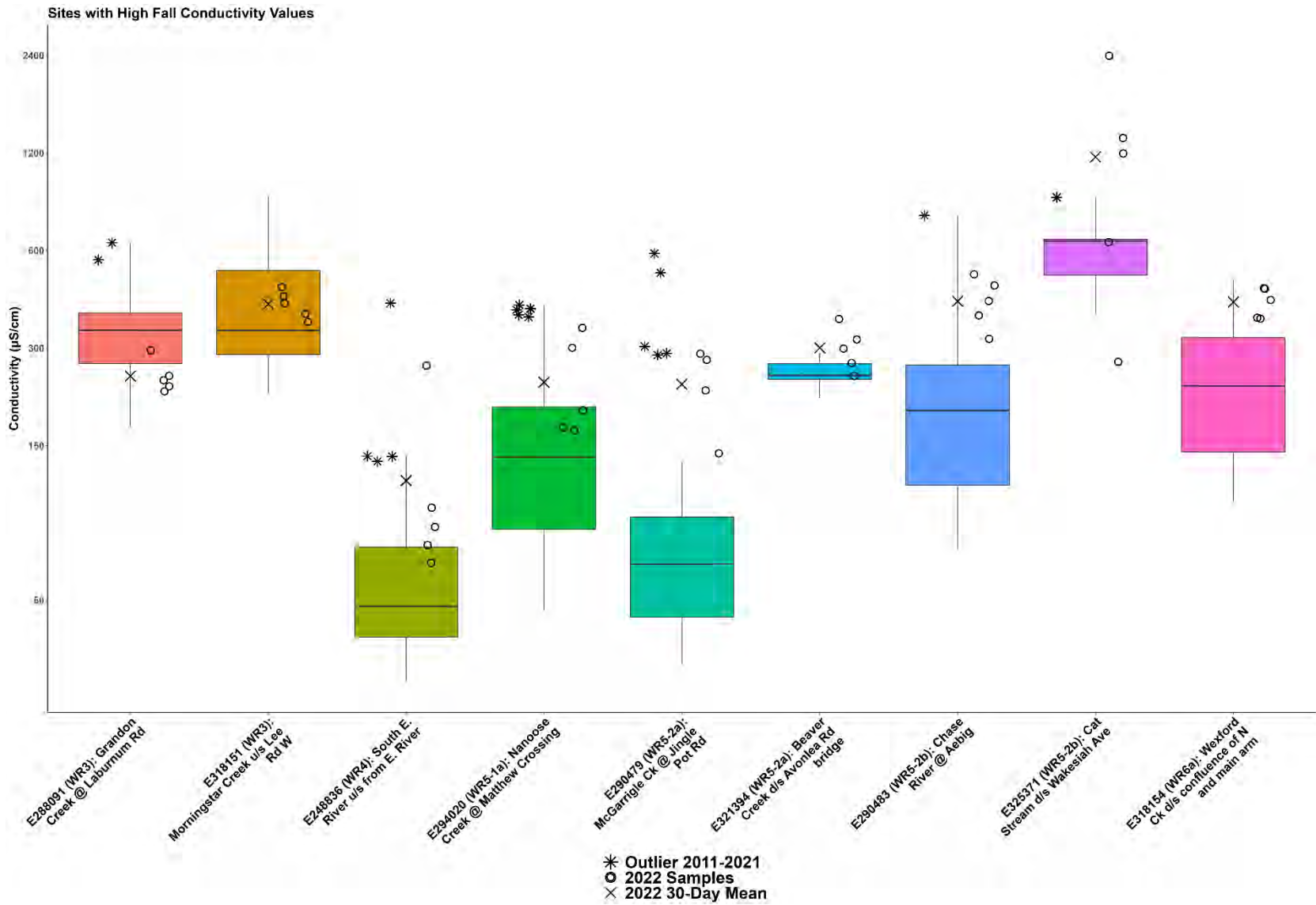
WR5-2b: South Wellington to Nanoose Summer Conductivity



WR5-2b: South Wellington to Nanoose Fall Conductivity









Millstone River

Buttertubs Marsh

Cat Stream

Chase River

Colliery Dam

E325371

E325372

E325373



**Cat Stream Stewards
2022 Monitoring Sites**

- Active
- Not Active

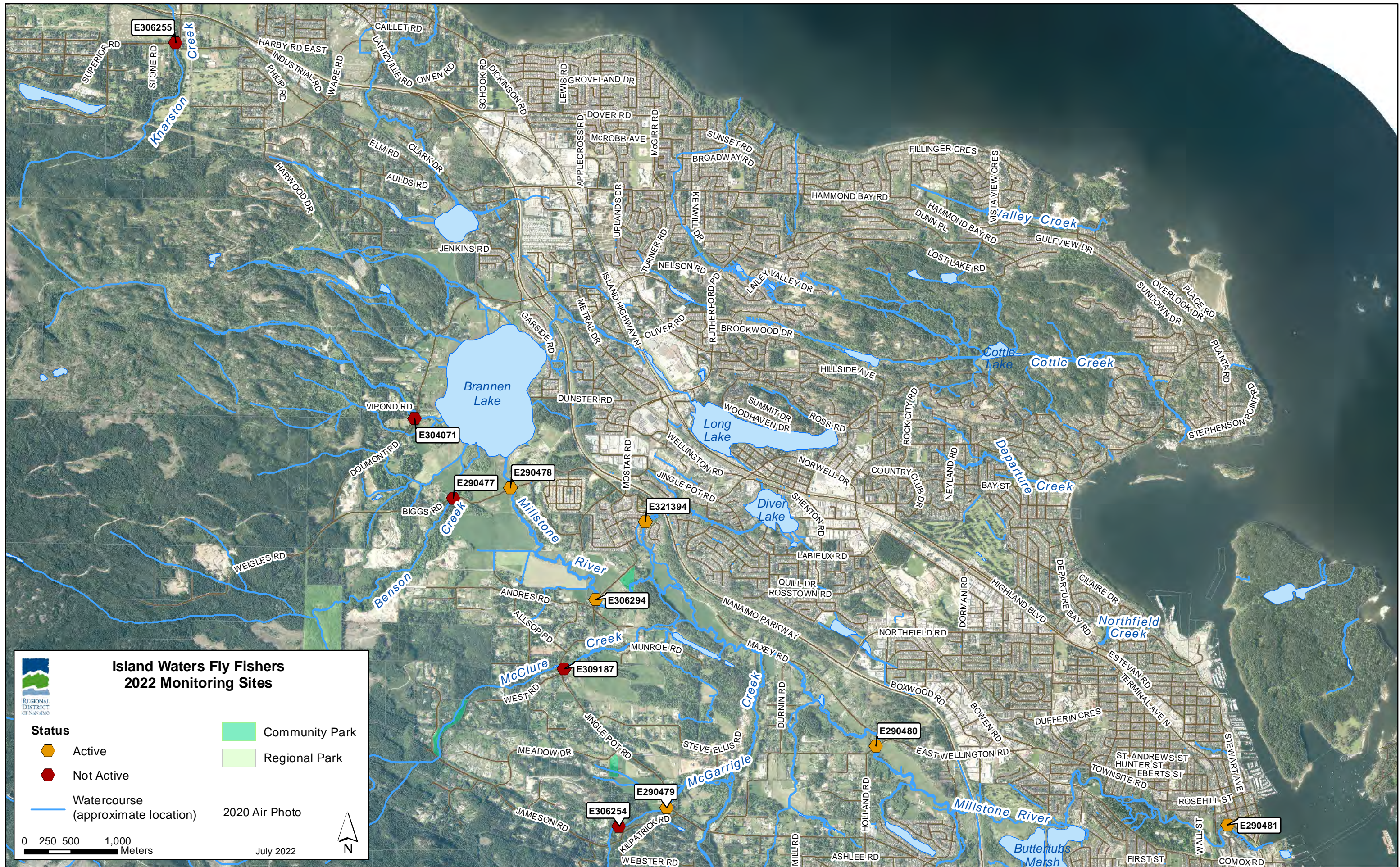
Watercourse (approximate location)

2020 Air Photo

0 100 200 400 Meters






July 2022





**Island Waters Fly Fishers
2022 Monitoring Sites**

Regional District of Nanaho

Status	 Community Park
 Active	 Regional Park
 Not Active	
 Watercourse (approximate location)	2020 Air Photo

0 250 500 1,000
Meters

July 2022

N



**Vancouver Island University
Mount Arrowsmith Biosphere Region
Research Institute
2022 Monitoring Sites**

Status

- ⬠ Active
- ⬠ Not Active

— Watercourse
(approximate location) 2020 Air Photo

0 100 200 400
Meters

July 2022

N

Electoral Area C

City of Nanaimo