

Farming for Info: Agrologists coming to a field near you

Provincial agrologists will be touring Nanaimo - Electoral Area F (Errington, Coombs & Hilliers) this summer to collect information on crops, irrigation, livestock, and land-use for farming areas. The crew will navigate public roads and observe land from within the vehicle, often with binoculars.

Watch for a pickup truck with BC Ministry of Agriculture magnetic signs on both doors in farming areas between August 20 - 23 2019.

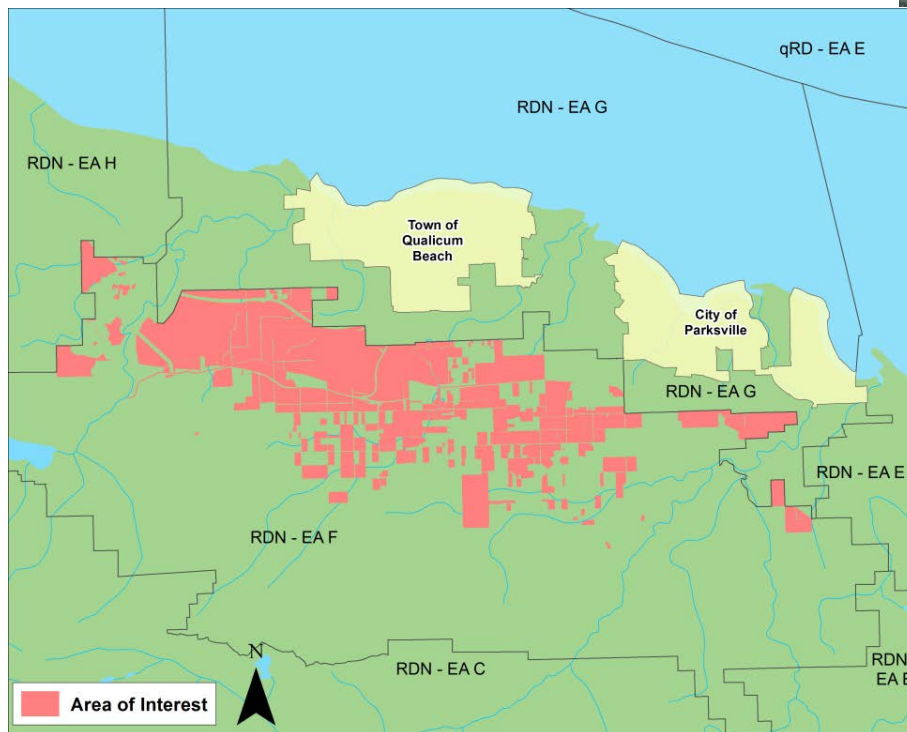
Agriculture is an important sector in the area, and to help ensure its viability, the Ministry of Agriculture, Nanaimo Regional District (RDN), and the Partnership for Water Sustainability in BC have partnered to update the Agricultural Land Use Inventory (ALUI) & Water Demand Model (WDM) from 2012.

The Agricultural Land Use Inventory will:

- Define the amount of actively farmed land as of 2019
- Provide a measure of change since the last inventory in 2012
- Inform a review of the Official Community Plan.

The Agricultural Water Demand Model will:

- Enable examination of water management alternatives that consider future land use changes
- Define potential impacts of climate change and identify appropriate adaptation strategies
- Inform future water storage modelling projects.



For further information:

Corrine Roesler, P.Ag
Agricultural Land Use Inventory
BC Ministry of Agriculture
Abbotsford
604.556.3110
Corrine.Roesler@gov.bc.ca

Courtney Simpson
Senior Planner
Long Range Planning
Regional District of Nanaimo
Nanaimo
250.390.6510
csimpson@rdn.bc.ca