

Gabriola Island's Village Way Path Construction Update

Construction of the Village Way path on Gabriola Island is scheduled to start on September 16 and be completed by December 15, 2020.

The Village Way path will create a safe and accessible path along the northern side of North Road between the junction of North and South Roads and the 707 Community Park entrance at Tin Can Alley.

For more project information including answers to Frequently Asked Questions visit rdn.bc.ca/gabriola-village-trail.

What to expect

- Typical work hours: 7:00 a.m. – 5:00 p.m.
- Construction noise and vibration should be expected during working hours.
- Garbage and recycling will be picked up as usual.
- Emergency Services will have access at all times.
- During the construction period, traffic disruptions can be expected.

Traffic Impacts

- A minimum of single lane alternating traffic will be maintained at all times.
- Temporary traffic signals will be in place during working hours to direct single-lane alternate traffic west of Lochinvar Lane on North Road as needed.
- Construction signs will be posted, and flag-persons will be on duty to assist with the traffic flow.
- Pedestrians will be given designated walkways.
- Care will be given to cyclists passing through the site to ensure safe passage.
- Access to driveways and parking lots will be maintained.
- In the case of a planned interruption to access, residences and businesses will be notified 24 hours in advance.

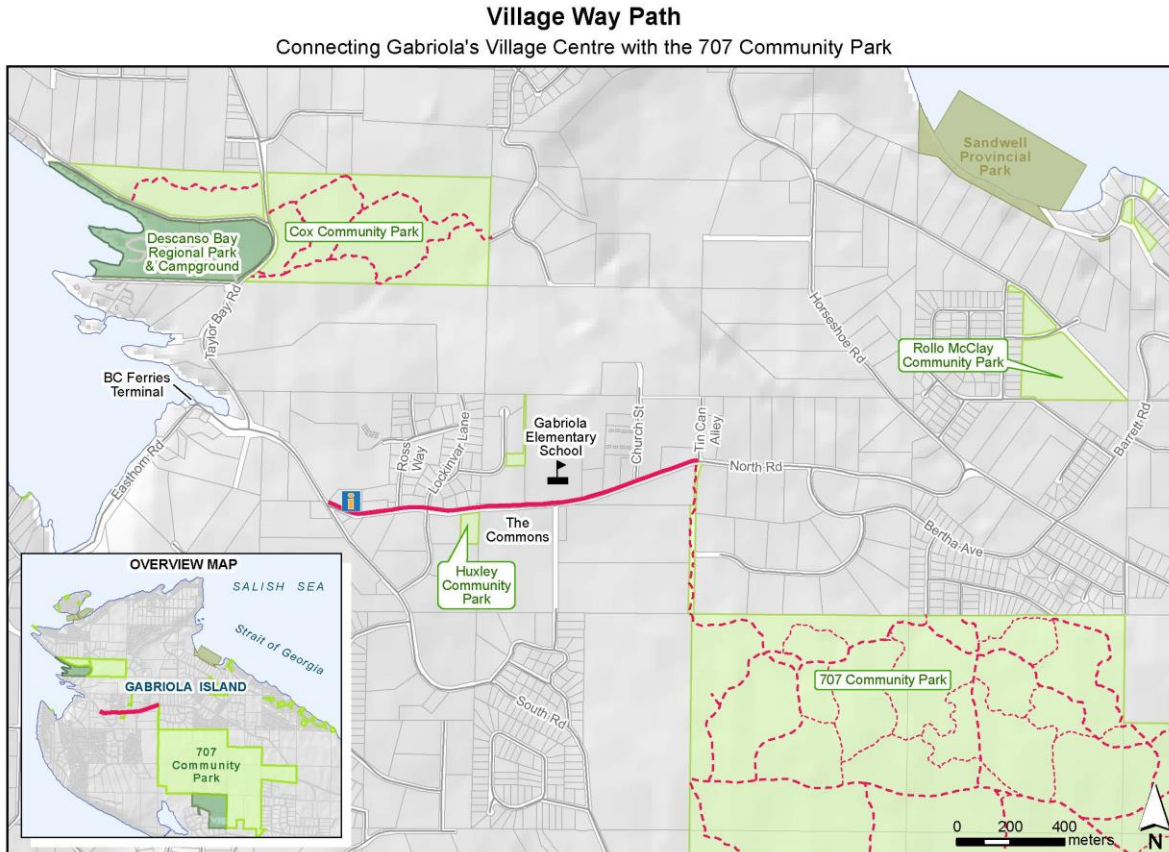
General Considerations

- Please exercise caution, obey all signage placed for your safety, and follow the directions of the flagpersons on duty.
- If you have young children, please advise them of the dangers and limited visibility of heavy equipment and trucks.
- Every effort will be made to keep local disruption to a minimum.

Get Involved RDN!


About the Village Way Trail

The 1.5 km path will be 2-meters wide and slightly elevated above the road surface; it will be surfaced with asphalt through the village core and graveled the remainder of the way. The path is located completely within the active roadway and is being built and maintained by the RDN under licence with the Ministry of Transportation and Infrastructure (MoTI).



For information about active construction activities, please contact:


Windley Contracting Ltd

 1-250-758-3411

For more information, please contact:

Parks Services

Regional District of Nanaimo

 1-888-828-2069

 recparcs@rdn.bc.ca

Get Involved RDN!