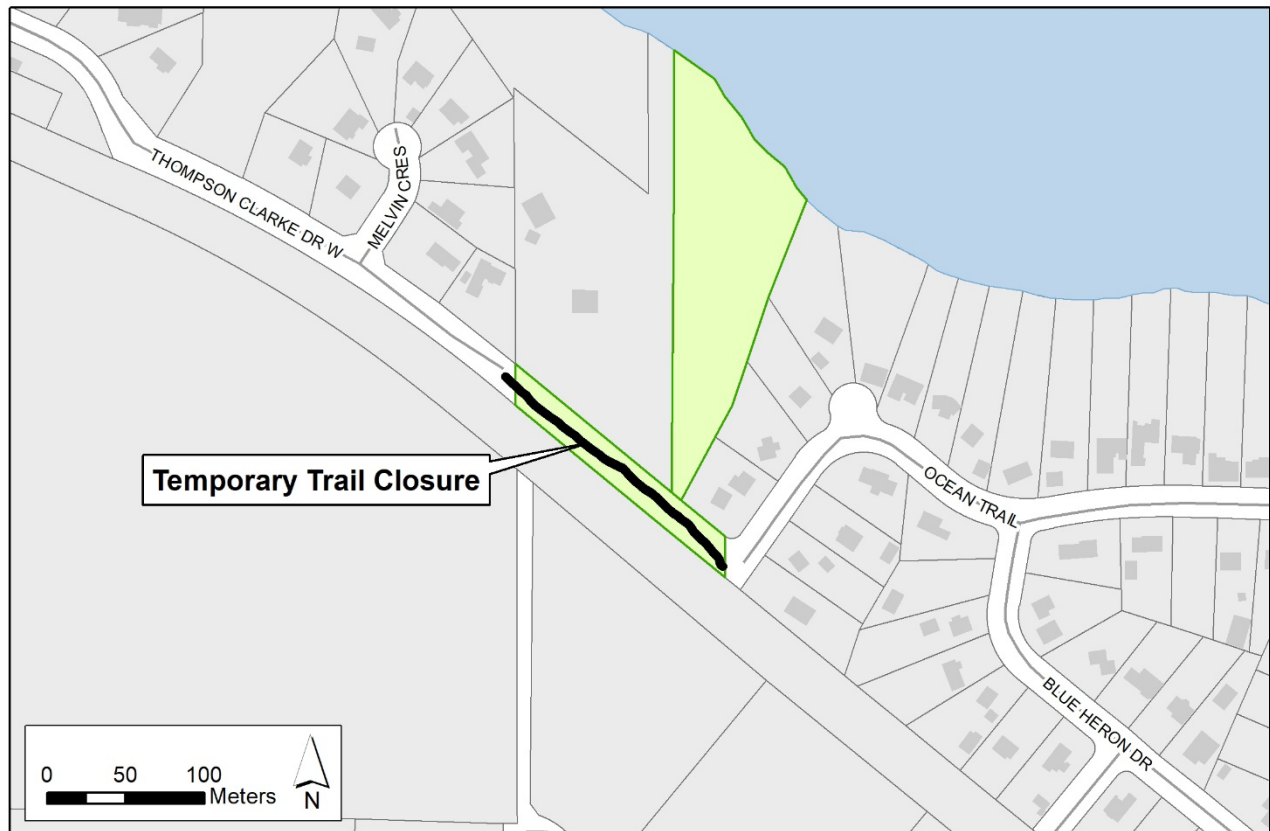


Thompson Clarke Ocean Trail - Temporary Closure

The Thompson Clarke Ocean Trail located in Electoral Area H is temporarily closed. The closure is in effect until further notice.

The trail is on privately owned land. Thank you for your cooperation during the temporary trail closure.



For more information, please contact:

Parks Services
Regional District of Nanaimo
1-888-828-2069
rdnparks@rdn.bc.ca

Get Involved RDN!