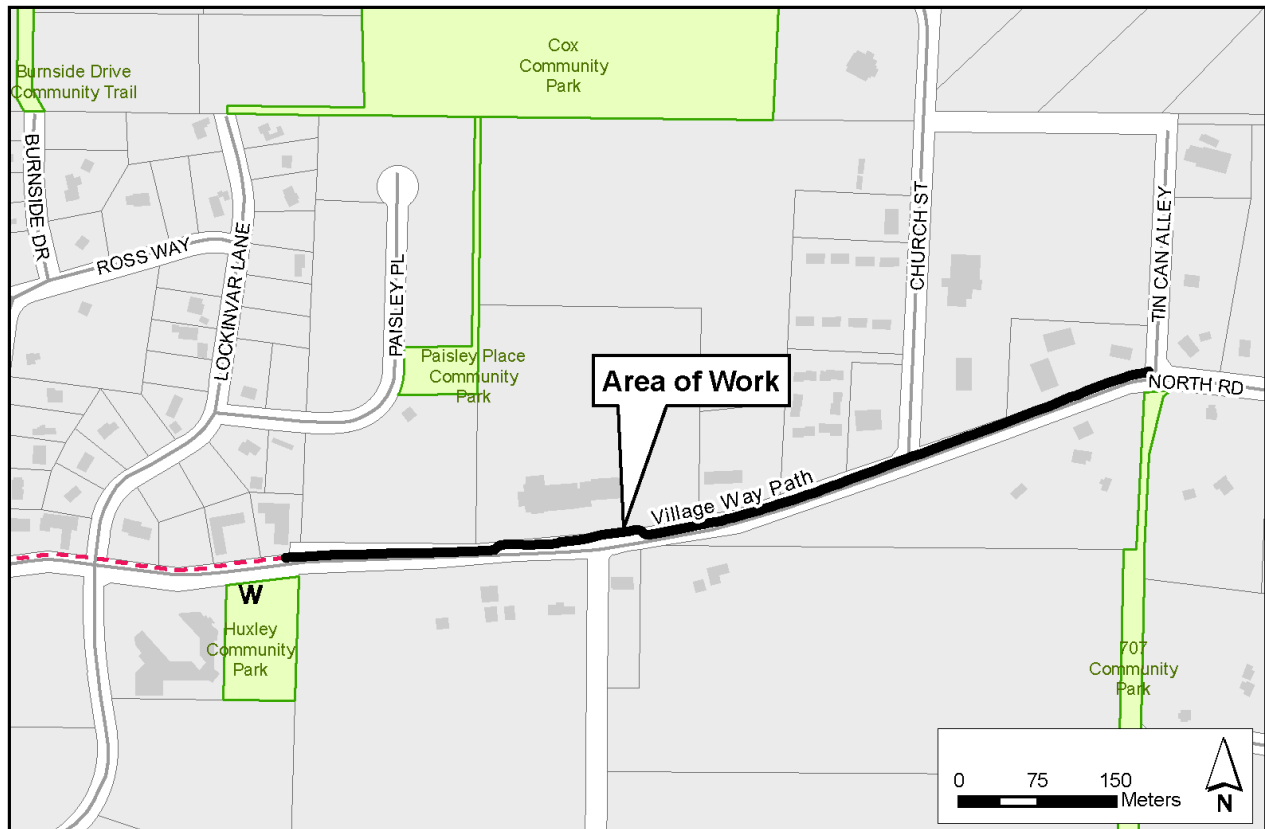


Village Way Path Paving


Asphalt paving work will be done on the gravel portion of the Village Way path on Gabriola Island from 590 North Road to Tin Can Alley. Work will include grading the gravel path and asphalt paving and is scheduled to begin on February 12, 2024. Construction is expected to be complete by the end of March.

The path will remain open for public use during construction, except for areas where work crews are active. Please be cautious, remain alert to construction activities and obey all posted signage when using the park.



For more information, please contact:

Parks Services
Regional District of Nanaimo

 1-888-828-2069

 rdnparcs@rdn.bc.ca

Get Involved RDN!