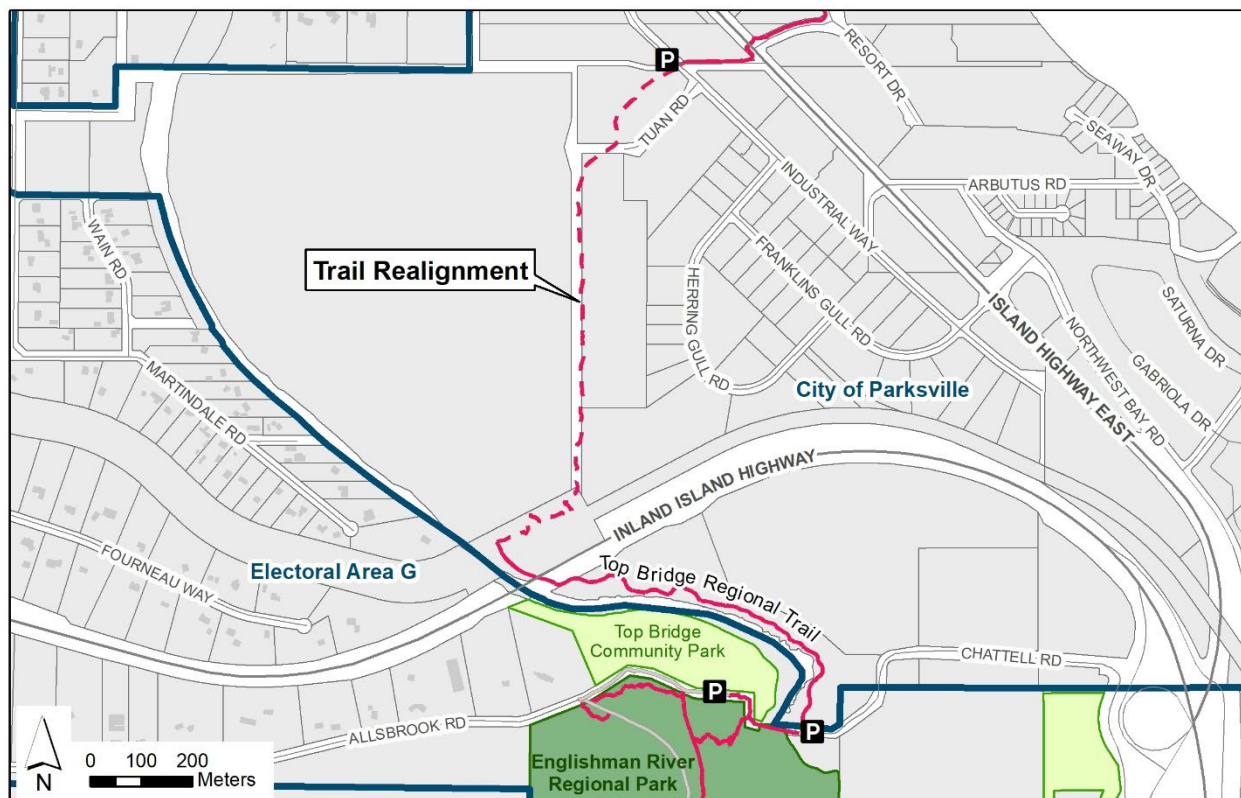


Trail Closure Update – Top Bridge Regional Trail

A section of the Top Bridge Regional Trail between the Inland Island Highway and Industrial Way that crossed private land is permanently closed to public access. The Regional District of Nanaimo (RDN) has reached an agreement with the City of Parksville to realign a section of the Top Bridge Regional Trail over an existing road right-of-way and on City of Parksville-owned lands to restore public access from the resort area of Parksville to the Top Bridge suspension bridge crossing. The trail work is expected to begin in April and will be substantially complete by the fall of 2024. Intermittent trail closures will occur when trail improvements are being implemented on the new trail.

Map of the new trail alignment:



For more information, please contact:

Parks Services

Regional District of Nanaimo

1-888-828-2069

rdnparks@rdn.bc.ca

Get Involved RDN!